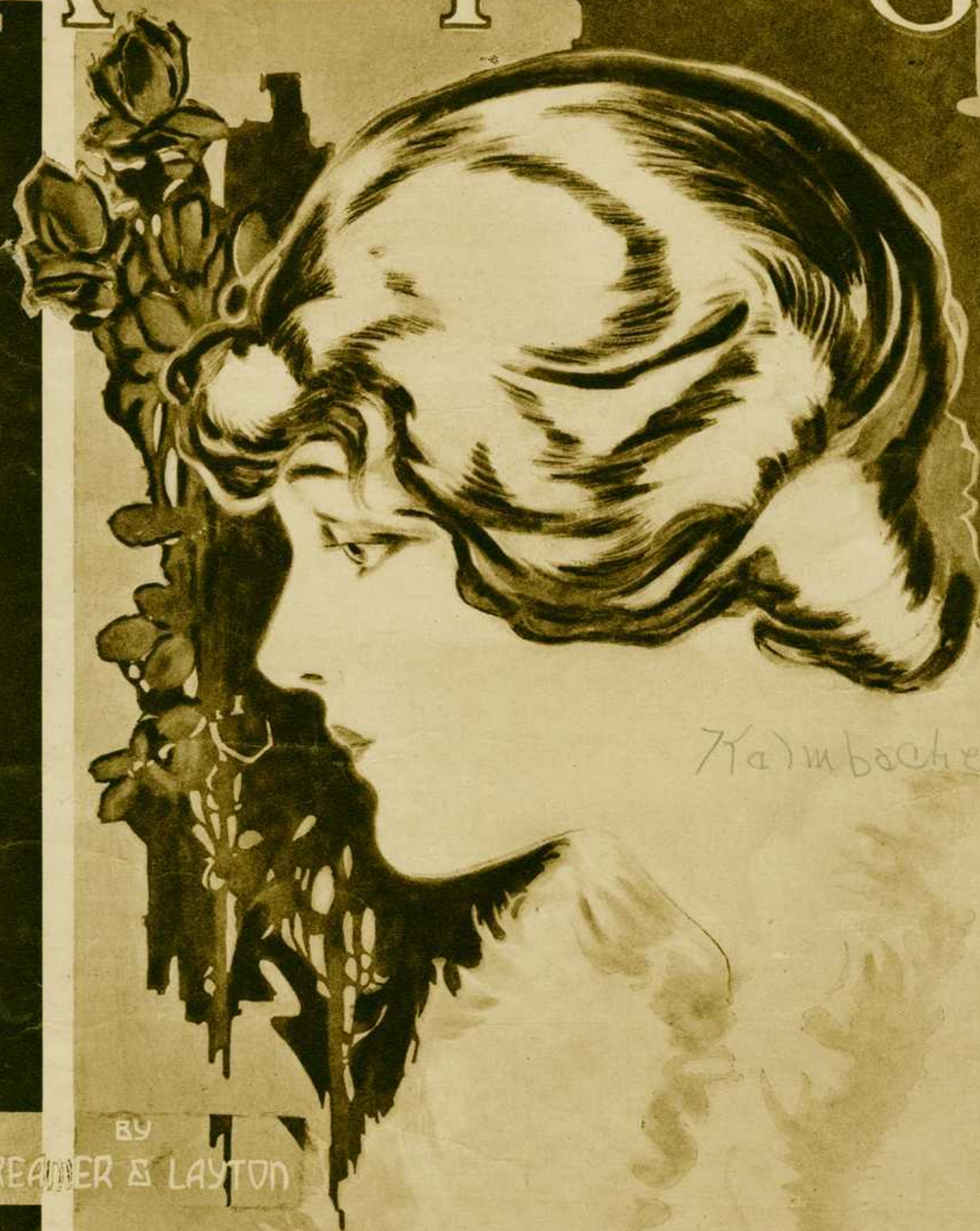


AFTER YOU'VE GONE



BY
CREAMER & LAYTON

EEHAYDON
NYC

BROADWAY MUSIC CORPORATION
WILL VON TILZER PRESIDENT
145 WEST 45TH ST. NEW YORK.

After You've Gone

By
CREAMER & LAYTON

Moderato

Piano

f

sfz

Vamp

p

Voice

Now won't you list-en dear-ie while I say How could you tell me that you're going a - way?
Don't you re-mem-ber how you used to say You'd al-ways love me in the same old way?

Don't say that we must part Don't break my ach-ing heart
And now it's ver - y strange That you should ev - er change

You know I've loved you tru - ly man - y years Loved you night and day
Sometimes I think some-one has won your heart Temp - ted you a - way

How can you leave me, can't you see my tears? List - en while I say
But let me warn you tho' we're miles a - part You'll re - gret some day

Copyright MCMXVIII by Broadway Music Corporation, 145 W. 45th St., New York
All Rights Reserved British Copyright Secured Will Von Tilzer Pres. International Copyright Secured
The Publisher reserves the right to the use of this Copyrighted work upon the parts of Instruments serving to reproduce it Mechanically

CHORUS

Af-ter you've gone and left me cry-ing Af-ter you've gone There's no de-ny-ing,

p-mf

* *rit.* *rit.* *

you'll feel blue, You'll feel sad, You'll miss the dear-est pal you've ev-er had

There'll come a time, now don't for-get it, There'll come a time, when you'll re-gret it

* *rit.*

Some day when you grow lone - ly Your heart will break like mine and you'll want me on - ly

Af-ter you've gone Af-ter you've gone a - way.

1 2

sfz

To All Sweethearts From The Boys Over There

Watch, Hope and Wait Little Girl

3

CHORUS

(with marked rhythm)

(Till I come back to You)

Watch lit - tle girl and hope lit - tle girl, and wait, lit - tle girl for me




Pray lit - tle girl, ev - ry day, lit - tle girl, while I'm a - cross the sea Give my love to Ma



Say "Hel - lo" to Pa And you know I'm long - ing, dear, to



know just how you are So write lit - tle girl, ev - ry night, lit - tle girl, And prom - ise you'll be



BROADWAY MUSIC CORPORATION

WILL VON TILZER, President
145 WEST 45th ST. NEW YORK