

She's Mine All Mine

By
BERT KALMAR
and
HARRY RUBY



Barbelle

Waterson, Berlin & Snyder Co.
THE LIND
THEATRE
BUILDING
NEW YORK

TRADE MARK REGISTERED

MADE
IN
U.S.A.

EVERY-ONE'S FAVORITE SONG HITS

Leave Me With A Smile

By CHAS KOEHLER
& EARL BURNETT

Chorus

Tho' it's time for parting, and my tears are starting, Leave me with a smile.

Tho' your heart may cry, dear; When you say good-bye, dear, Leave me with a

The musical score for "Leave Me With A Smile" is written in G major (one sharp) and 4/4 time. It features a vocal melody line and a piano accompaniment. The piano part begins with a *p-f* (piano-forte) dynamic. The lyrics are: "Tho' it's time for parting, and my tears are starting, Leave me with a smile. Tho' your heart may cry, dear; When you say good-bye, dear, Leave me with a".

Copyright MCMXXI by Waterson Berlin & Snyder Co.

In My Heart - On My Mind - All Day Long

By BERT KALMAR
and HARRY RUBY

Chorus

In my heart, on my mind, all day long, And in the night it seems,

You're with me in my dreams. But when my dreams fade a - way And the dawn be-gins to break

The musical score for "In My Heart - On My Mind - All Day Long" is written in G major (one sharp) and 4/4 time. It features a vocal melody line and a piano accompaniment. The piano part begins with a *p-f* (piano-forte) dynamic. The lyrics are: "In my heart, on my mind, all day long, And in the night it seems, You're with me in my dreams. But when my dreams fade a - way And the dawn be-gins to break".

Copyright MCMXXI by Waterson Berlin & Snyder Co.

THESE SONGS FOR SALE AT ALL MUSIC DEALERS
OR SENT DIRECT BY THE PUBLISHER ON RECEIPT OF 35¢ EACH
ALSO OBTAINABLE ON ALL PHONOGRAPH RECORDS AND MUSIC ROLLS

She's Mine, All Mine!

By BERT KALMAR
and HARRY RUBY

Tempo di Valse

Piano

The piano introduction is in 3/4 time, marked 'Tempo di Valse'. It features a treble and bass staff. The treble staff begins with a series of eighth and sixteenth notes, while the bass staff provides a steady accompaniment of quarter notes. The key signature has two flats (B-flat and E-flat).

Voice

The first vocal entry is on a single staff. The lyrics are: "The boys on the cor - ner were talk - ing, — Each one said his You ought - a see Jim - my on Sun - day, — When he goes to". The piano accompaniment is shown in two staves below the vocal line, starting with a piano (*p*) dynamic.

The second vocal entry continues the melody. The lyrics are: "girl was the best; — And aft - er they all got thru squak - ing, — One call on his skirt. — He wears a white col - lar on Sun - day, — And". The piano accompaniment continues in two staves.

The third vocal entry concludes the phrase. The lyrics are: "big guy stepped out from the rest. — Jim - my O' Lear - y, said, 'I've got a puts on his oth - er blue shirt. — They go to danc - es, but he takes no". The piano accompaniment continues in two staves.

dear-ie, She's dif-frent from all of your girls, — She's not a
chanc-es, He al-ways sticks close to her side, — And when a

queen like you see on the screen, And she aint got no dia-monds or pearls." —
pal wants to dance with his gal, He says "Go to it, I'm sat - is - fied!" —

Chorus

"But she's mine, all mine! — Yes, she's no-bod-y else's — but mine. —
"But she's mine, all mine! — Yes, she's no-bod-y else's — but mine. —
"But she's mine, all mine! — As a cook she is cer-tain-ly fine. —

— I told her I worked in a glue fact-o-ry, And that's how she
— She sure is a dan-dy, she's hand-y for fair, She makes her own
— Her pies are de-lic-i-ous, She baked me a mince, I ate some last

hap-pened to get stuck on me. And she's mine, all mine! — On her
clothes and she cuts her own hair. And she's mine, all mine! — She's as
week, and it's been with me since. And she's mine, all mine! — And I

nose there's a per-ma-nent shine. — She has big blue eyes and a lit-tle pug-
sweet as the grapes on the vine. — Last night in the par-lor we sat all a-
know that we'll get a-long fine. — She's smart as a whip, and as sharp as a

-nose, She puts Mar-y Gar-den all ov-er her clothes, She looks like a
-lone, I gave her a ring an-y gal's proud to own, And I'm sav-ing
knife, She saved ev-'ry dol-lar she's made in her life, When she gets e-

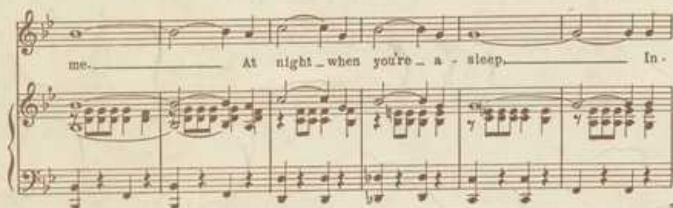
Dais-y and smells like a Rose, And she's mine, all mine! — "But she's mine!" —
up now to buy her the stone, And she's mine, all mine! — "But she's mine!" —
-nough saved I'll make her my wife, And she's mine, all mine! — "But she's mine!" —

THE LATEST ARABIAN FOX-TROT SENSATION

THE SHEIK

(OF ARABY)

CHORUS



Copyright MCMXXI by Waterson, Berlin & Snyder Co.
Copyright Canada, MCMXXI by Waterson, Berlin & Snyder Co.
International Copyright Secured



~ WORDS BY ~
HARRY B. SMITH
~ AND ~
FRANCIS WHEELER
~ MUSIC BY ~
TED SNYDER



L 11,
M 1
248
h-x-158
no 2.



THIS SONG FOR SALE AT ALL MUSIC DEALERS
OR SENT DIRECT BY THE PUBLISHER ON RECEIPT OF 35¢
ALSO OBTAINABLE ON ALL PHONOGRAPH RECORDS AND MUSIC ROLLS
A LIST OF LATEST SONG HITS SENT ON REQUEST