

HONOLULU AMERICA LOVES YOU



WORDS BY
GRANT CLARKE
AND **EDDIE COX**

MUSIC BY
JIMMIE V. MONACO

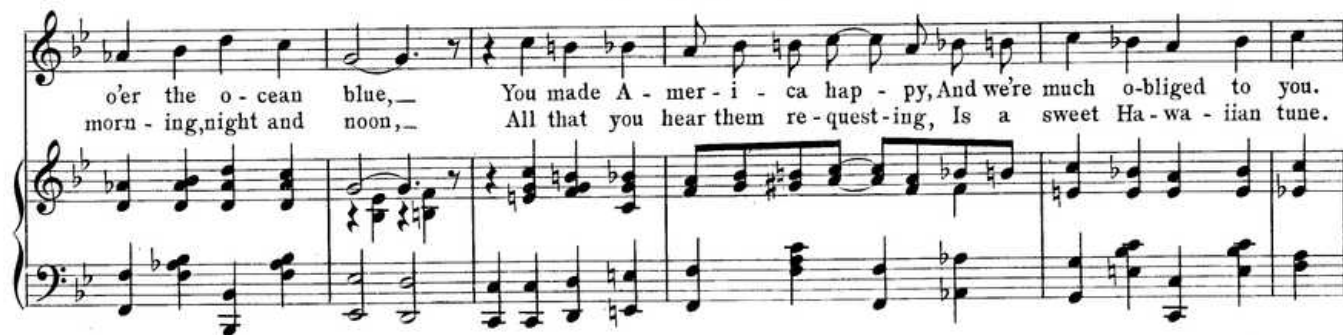
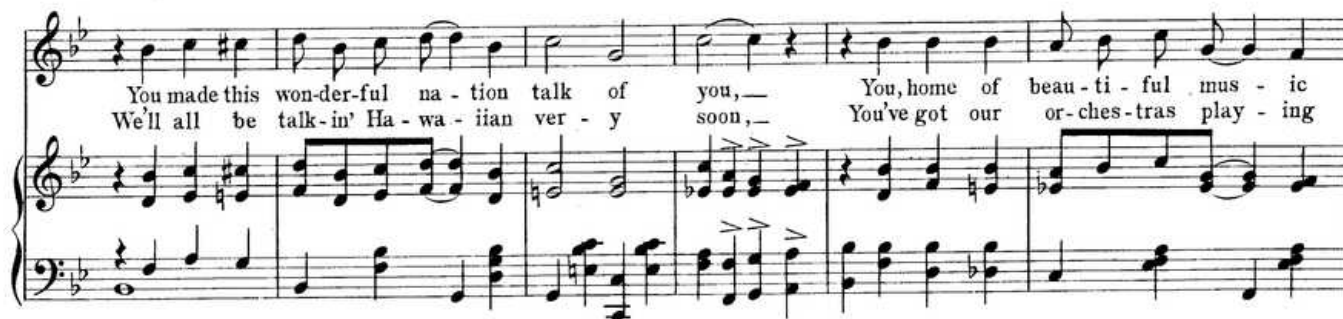
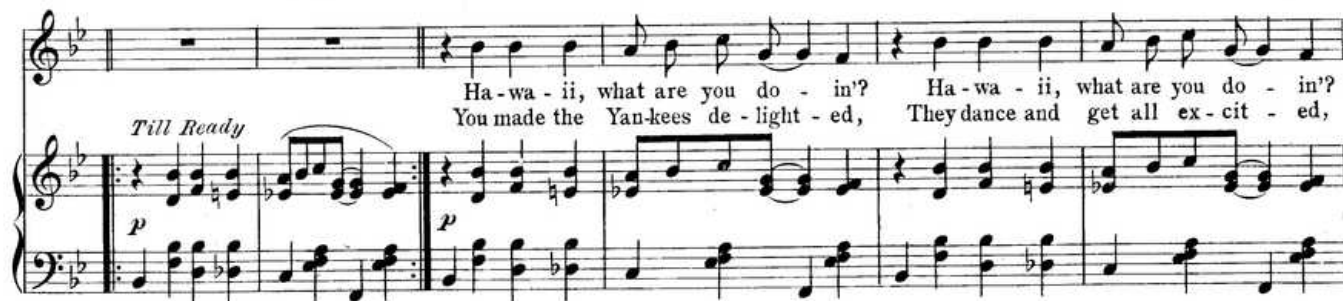
POPULAR EDITION
LEO FEIST INC. NEW YORK
ASCHERBERG, HOPWOOD & CREW, LTD. LONDON, ENGLAND

Honolulu, America Loves You

(We've Got To Hand It To You)

By EDDIE COX,
GRANT CLARKE,
& JIMMIE V. MONACO

Allegro moderato



CHORUS



This Composition may also
be had for your Talking
Machine or Player Piano

Copyright MCMXVI by LEO. FEIST Inc. Feist Building, N.Y.
International Copyright Secured and Reserved
London, Ascherberg, Hopwood & Crew, Limited

Also Published for
Band 25¢
Orchestra 25¢
Male Quartette . 10¢

We're thank - ing you too, ——— we do! ——— You've made our poor-est of fam - i-lies

Dance to your beau-ti-ful mel - o-dies, Our mil-lion - aires are play-ing U - ka - le - le's too. Your hu - la

hu - la ——— is ver - y pe - cu - liar, ——— In Ca - fés now - a - days, that's all they

do, ——— Up in Bos-ton where they eat those beans, They know what Yac-ki Hu-la means, Oh, Hon-o-

lu - lu, ——— We've got to hand it to you. ——— Oh, Hon - o - you. ———

TWO NEW SONGS Worth "Raving" About!
BE SURE TO GET A COPY OF EACH. You'll Like Them

Two Biggest Sellers in Years



"Some Songs!"
 is
**Broadway's
 Verdict**



"There's a Little Bit of Bad in Every Good Little Girl"

Yes, there is a "touch of tabasco"—a dash of pep and ginger—in this song. It's an irresistible twin-six success that hits the high spots of innocent fun.

You can't stop it any more than you can stop a cyclone. It carries Brice & King, Rae Samuels and other stage stars to almost endless encores.

Never before has a novelty song gripped the country like this one.

CHORDS Grant Clarke—Fred Fischer

There's a lit-tle bit of bad in ev-ry good lit-tle girl,
 They're not to blame—Moth-er Eve was ver-y, ver-y good, but
 e-ven she raised Cain—They read the good book Sun-day, And

LE
 TRADEMARK
 REGISTERED
**"You
 Can't
 Go
 Wrong
 With
 any
 'Feist'
 Song"**

"I Know I Got More Than My Share"

Here is a ballad that surges with the wonderment of grateful love. Words of gratitude set to a melody that is so sweetly beautiful it is the talk of professional and amateur world.

If "M-O-T-H-E-R" made a hit with you, here is big hit No. 2.

Get a copy of this song and you will surely get more than your share of some sweet love ballad.

CHORDS Grant Clarke—Howard Johnson

God gives the wise man their wis-dom, seeds all the po-ets their
 dreams, To fa-ther and moth-er their love for each oth-er, we
 all get a share, so it seems, I thought that I was for-

Almost a million copies of the above songs already sold

ON SALE TODAY

at all Music and Department Stores, or at
 any Woolworth, Kresge or McCrory Store.

Other Popular "FEIST" Songs:

"You're A Dangerous Girl" "My Old Rose"
 "M-O-T-H-E-R" "Moonshine Sally"
 "Gila, Galah, Galoo" "Honolulu Blues"
 "I'm Saving up the Means to Get to New Orleans"
 "Some Girls Do and Some Girls Don't"
 "There's a Garden in Old Italy"
 "Not so Very Far from Zanzibar"
 "Sweet Cider Time, When You Were Mine"

"Don't Bite the Hand That's Feeding You"
 "Honolulu, America Loves You"
 "Way Out Yonder in the Golden West"
 "Civilization" Peace song
 "Ireland Must Be Heaven, for my Mother Came from There"
 "The Sweetest Melody of All"
 "He May Be Old, but He's Got Young Ideas"
 "It's Not Your Nationality, It's Simply You"

These songs are printed in the new "Feist" easy-to-read style. Complete song at a glance—no leaves to turn

SPECIAL NOTE: You should get all these songs from your dealer. Please do so. If you can't, send us eight 2c stamps for one, or a dollar bill for any seven pieces. Orchestra or Band—25c each. Male quartette—10c each. These pieces may also be procured for your Talking Machine or your Player Piano from your dealer. Be sure to get them. Orchestra Leaders will gladly play them on request.

LEO FEIST, Inc., FEIST Bldg., 232 W. 40th St., New York

A 55

—ABOVE IS COPY OF AN ADVERTISEMENT APPEARING IN—
"Cosmopolitan Magazine" and "The Saturday Evening Post"

L-114
 M1

248

by 222
 no 27