

# "Apple Sass"

By Harry Belding  
Composer of "Good Gravy Rag"



BUCK AND LOWNEY  
PUBLISHERS OF  
HOLLAND BUILDING  
ST. LOUIS, U.S.A.  
MUSIC THAT SELLS

Liesmann

(Tres Gingembre.)

### Tango Tempo (with ginger)

**Tango Tempo (with ginger)**

*f* *fz*

A handwritten musical score for the song "The Rose Tree". The score is written on two staves, a treble staff and a bass staff, joined by a brace on the left. The key signature has one sharp (F#), and the time signature is 2/4. The melody is primarily in the treble staff, with some chords and single notes in the bass staff. The lyrics are written below the staves, aligned with the notes. The handwriting is in ink on aged paper.

*The Rose Tree*

Handwritten musical score for "The Rose Tree". The score is written on two staves, a treble staff and a bass staff, joined by a brace on the left. The key signature has one sharp (F#), and the time signature is 2/4. The melody is primarily in the treble staff, with some chords and single notes in the bass staff. The lyrics are written below the staves, aligned with the notes. The handwriting is in ink on aged paper.

A musical score for the song 'The Rose Tree'. It features a treble and bass staff. The melody is in the treble staff, and the accompaniment is in the bass staff. The key signature has one flat (B-flat), and the time signature is 4/4. The score includes a repeat sign and a first ending bracket. The lyrics are written below the bass staff.

A musical score for the song 'The Rose Tree'. It features a treble and bass staff. The treble staff contains the melody, which includes a key signature change from one sharp (F#) to two sharps (F# and C#). The bass staff provides a harmonic accompaniment with chords and moving lines. The score is written in a standard musical notation style with a common time signature.

Copyright MCMXIII by Buck & Lowney.

**For Sale At Any Complete Music Dept.**



# Apple Sass Rag.

By HARRY BELDING

Composer of  
*Good Gravy Rag.*

The musical score for "Apple Sass Rag" is written for piano. It consists of five systems of music. The first system begins with a forte (*ff*) dynamic. The second system features a piano (*p*) dynamic in the bass and a forte (*f*) dynamic in the treble. The third system also includes piano (*p*) and forte (*f*) dynamics. The fourth system contains first and second endings. The fifth system starts with a forte (*f*) dynamic and concludes with a mezzo-forte (*mf*) dynamic. The score includes various musical notations such as eighth notes, sixteenth notes, and rests.





# WE SUBMIT A PORTION OF THE FAMOUS "TRUE BLUE" SONG "LADDIE"



## The Biggest "Hit" of the Season

This Beautiful Ballad now ranks with the Highest Class Songs on the Market.

It is unlike any number you have ever heard; the Melody is that soft, plaintive kind that reminds one of a Fairy Band.

The Lyric is a Story of True Love, not of to-day; but the love of "LADDIE" for his little sister who lives with the Fairies deep in the Woodland.

It is a wonderful story wedded to a wonderful melody and should be on every music lovers Piano.

Music by  
LUELLA LOCKWOOD MOORE  
Lyrics by  
J. FRED LAWTON

"A True Blue Song"

Laddie.

Music by  
J. FRED LAWTON

Music by  
LUELLA LOCKWOOD MOORE

## A FACT WORTH KNOWING

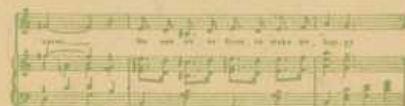
As "Publishers of Music that Sells" our firm has always placed on the Market Music that Pleases.

Our Ideas are new, the greatest Orchestras and Vaudeville Stars in the country, say our Music is wonderful.

### OUR LATEST SUCCESSES ARE:

- "I had a Wonderful Girl" Ballad
- "Too Much Jinger" Tango Dance
- "Your'e a Beautiful Brown Eyed Burglar"
- "Let's all get Together and Sing"
- "The Marjorie" Hesitation Waltz
- "Reuben Reel" Castle Walk
- "I'm Pinin' Away for You".

If your Music Department does not have it in stock send  
15c. to Buck & Lowney, St. Louis.



THE WORD AND TUNE OF THIS SONG IS A TRUE STORY  
IT SHOULD BE IN EVERY HOME - THE SONGS THAT SELL



ALL RIGHTS RESERVED BY BUCK & LOWNEY, ST. LOUIS, MO.

SEND FOR OUR  
COMPLETE  
Thematic Catalogue.

## BUCK & LOWNEY

HOLLAND BUILDING  
ST. LOUIS, U. S. A.

"PUBLISHERS  
of  
MUSIC THAT  
SELLS"

MI  
58  
BRIE TIME A-C 10