



Carmen

GEORGES BIZET



OPERA
THEATER 15/16



JACOBS SCHOOL OF MUSIC

INDIANA UNIVERSITY

Bloomington

Five Hundred Twenty-Second Program of the 2015-16 Season

Indiana University Opera Theater

presents

as its 447th production

Carmen

Opéra Comique in Four Acts

Music by

Georges Bizet

Libretto by

Henri Meilhac and Lucovic Halévy

Based on the novel by Prosper Mérimée

David Effron, *Conductor*

Jeffrey Buchman, *Stage Director*

Robert O'Hearn, *Set and Costume Designer*

Dana Tzvetkov, *Costumer*

Patrick Mero, *Lighting Designer*

Walter Huff, *Chorus Master*

Brent Gault, *Children's Chorus Master*

Rosa Mercedes, *Dance Choreographer*

Matt Herndon, *Fight Choreographer*

Gary Arvin, *Diction Coach*

Daniela Siena, *Supertitles Author*

Musical Arts Center

Friday Evening, February Twenty-Sixth

Saturday Evening, February Twenty-Seventh

Friday Evening, March Fourth

Saturday Evening, March Fifth

Seven-Thirty O'Clock



OLD NATIONALSM

Wealth Management

music.indiana.edu

Cast of Characters

Friday, February 26
Saturday, March 5

Saturday, February 27
Friday, March 4

Don José	Trey Smagur	Justin Stolz
Carmen	Courtney Bray	Patricia Illera
Micaëla.	Yuji Bae	Claire Lopatka
Escamillo	Ross Coughanour	Jianan Huang
Zuniga	Andrew Richardson	Jeremy Gussin
Moralès	Mark Billy	Teofil Munteanu
Frasquita	Emma Donahue	Madeline Ley
Mercédès	Marianthi Hatzis	Chelsea DeLorenz
Le Dancaïre	Benjamin Seiwert	Andres Acosta
Le Remendado	Max Zander	Darian Clonts
Supernumeraries.	Zach Decker, Kara Dual-Fowler, Norm Holy Antonio Houck, Moses Mayabilo, Ben Monticue Jim Nelson, Andrew Nine, Tod Wicks	

Opera Chorus

Walter Huff, *Chorus Master*

<i>Women</i>	<i>Women (cont.)</i>	<i>Men</i>	<i>Men (cont.)</i>
Emily Baker	Annika Mauss	Nizel Austin	Alonza Lawrence
Joanna Burke	Elizabeth McConnaughey	Milan Babic	Ji Lu
Annie Chester	Kaitlyn McMonigle	Bradley Bickhardt	Gabriel Ma
Tiffany Choe	Lauren McQuistin	Mark Billy	Caleb Morgan
Taylor del Vecchio	Marlen Nahhas	Michael Day	Ben Rardin
Alyssa Dessoye	Christina Nicastro	Noah Donahue	Jacob Rhoad
Monica Dewey	Kirstin Olson	Thomas Drew	Tislam Swift
Christina Dragnea	Amanda Perrera	Quinn Galyan	Michael Vlach
Kaitlyn Johnson	Bridget Ravenscraft	Steven Garza	Stephen Walley
Geuna Kim	Esther Schneider	Glen Hall	Lucas Wassmer
Lena Kornreich	Daisy Schön	Michael Hyatt	
Gretchen Krupp	Ann Marie Theis	Benjamin Jones	
Natalie Martell	Tiffany Williams	Brian Joy	

Children's Chorus

Brent Gault, *Chorus Master*

Sarah Miller, *Assistant Chorus Master*

Samira Abdul-Hakim	Leanna Gladson	Naina Prabhakar	Gyeongmin Seo
Marielle Berin	Desiree Huntington	Alayna Przybyla	Anabelle Thomassen
Grace Buehler	Callum Miles	Claire Przybyla	Fiona Weaver
Helen Christ	Niccolo Miles	Noel Przybyla	
Nathaniel Cox-Thurmond	Jessica Parrish	Jake Sater	

A Message from Our Sponsor

Old National Wealth Management

Old National Wealth Management is pleased to advance the mission of the Jacobs School of Music by supporting time-honored works like the IU Opera Theater's production of *Carmen*. At Old National Wealth Management, we understand the importance of investing in efforts that enrich life. We would like to thank the Jacobs School of Music, all of the performers, as well as the contributors who have made this production possible.

About Old National Wealth Management

Old National has been offering trust and wealth management services since 1907. With \$8 billion of assets under management, Old National Wealth Management ranks among the top 100 fiduciary management firms in the U.S. Families, corporations, and foundations experience local, personal service from a dedicated team of seasoned professionals. Our team structure offers the unique advantage of long-term continuity of service. ONWM is a trusted financial partner assisting with investment management, financial planning, retirement planning, and trust services. Old National Wealth Management is a part of the Old National Bancorp family of companies, the largest financial services company headquartered in the state of Indiana.

Synopsis

Nineteenth-Century Seville, Spain

Act I

Soldiers and townspeople mill around in a square in Seville. A young peasant girl, Micaela, asks the soldiers if they have seen Don José. Telling her he'll be back soon, they try to persuade her to stay with them, but she declines. The relief soldiers, including Don José, arrive. Factory bells ring, and a group of cigarette girls arrives to return to work, including the popular gypsy beauty Carmen. She focuses her attention on Don José, who pretends not to notice. Before leaving, she seductively tosses a flower at him. Alone, Don José recovers the flower and reflects on Carmen's charms. Micaela finds him and delivers both a letter and a kiss from his mother, who asks her son to marry Micaela. Don José promises his love and fidelity to Micaela, despite the temptations of Carmen. A ruckus erupts from the cigarette factory. Carmen has injured another woman, and the officer Zuniga commands Don José to escort Carmen to prison. But Don José succumbs to her charms. He agrees to a rendezvous and lets Carmen escape.

Act II

At Lillas Pastia's inn, Carmen and her friends Frasquita and Mercedes consort with Zuniga and other soldiers. A group of revelers arrives, celebrating Escamillo, the illustrious bullfighter. The crowd cheers as Escamillo boasts of his victories. He notices Carmen, but she remains indifferent. Zuniga, also smitten, tells Carmen that he plans to return to the inn later to visit her. When the crowd disperses, the smugglers Remendado and Dancairo try to enlist the aid of Carmen, Frasquita, and Mercedes. Mercedes and Frasquita agree to help them smuggle contraband, but Carmen, expecting Don José, wants to stay at the inn. Don José arrives, and Carmen dances for him. But distant bugles signal him to return to his quarters, and he prepares to leave. Carmen mocks his obedience and encourages him to run away with her and lead the free gypsy life. Don José remains unconvinced until Zuniga returns to the inn seeking Carmen. In a jealous rage, Don José defies his officer's orders to leave. As the smugglers pounce on Zuniga and escort him out of the inn, Don José has no choice but to remain with the gypsies.

Act III

At the mountain hideout of the smugglers, Don José longs for his mother, who still believes him an honest man. Carmen taunts him and urges him to leave, but he refuses. Frasquita and Mercedes tell their fortunes with a deck of cards. When Carmen takes her turn, the cards foretell death for her and Don José. The gypsies set off to smuggle contraband, leaving Don José behind to guard the camp. Micaela arrives at the mountain hideout searching for Don José and hides among the rocks. Escamillo approaches the camp looking for Carmen. He and Don José exchange words and begin to fight. But the smugglers return in time to stop Don José from wounding Escamillo, who invites them all to the bullfight in Seville. Her hiding place discovered, Micaela begs Don José to return home to his mother, who is dying. Despite his violent jealousy, Don José leaves with Micaela.

André Watts

THURSDAY, APRIL 14, 11AM

FRIDAY, APRIL 15, 8PM

SATURDAY, APRIL 16, 5:30PM

Hilbert Circle Theatre

Downtown Indianapolis

GILBERT VARGA, CONDUCTOR

ANDRÉ WATTS, PIANO

FRANCK *Psyché et Eros*

MACDOWELL Piano Concerto No. 2

WAGNER *Tristan und Isolde*: Prelude & Liebestod

TCHAIKOVSKY *Romeo and Juliet*

— TICKETS FROM \$15! —

TITLE SPONSOR: *Lilly*

THE LEGENDARY MENAHEM PRESSLER

THURSDAY, MAY 5, 11AM

SATURDAY, MAY 7, 7PM

Hilbert Circle Theatre

Downtown Indianapolis

ROBERTO ABBADO, CONDUCTOR
MENAHEM PRESSLER, PIANO

BRAHMS *Tragic Overture*

MOZART Piano Concerto No. 27

SCHUMANN Symphony No. 2

TITLE SPONSOR: *Lilly*

Act IV

At the bullfight, a crowd gathers to watch the procession of toreadors. Escamillo and Carmen arrive together. Mercedes and Frasquita warn Carmen that Don José is lurking about. Carmen, unafraid, waits alone for Don José. He approaches and begs her to leave with him. She insists that their affair is over, that she does not love him anymore, and that she now loves Escamillo. As Don José's demands become more desperate, Carmen throws the ring he once gave her at him. Don José murders Carmen, while the crowd inside the bullring cheers Escamillo.

Program Notes

by Bret McCandless

(*Musicology Ph.D. Student*)

Carmen has seeped into the public imagination through its riveting melodies, dynamic storytelling, and sensational ending. Based on the novella by Prosper Mérimée and set to music by Georges Bizet on a libretto by the celebrated Henri Meilhac and Ludovic Halévy, *Carmen* remains one of the most performed operas in the repertoire: the Metropolitan Opera performed it for the one-thousandth time in 2015. Even if this is your first time seeing it in the opera house, you probably are familiar with many of the songs and the tragic ending. The story of the downfall of the naïve soldier Don José due to his irreconcilable desire for the gypsy Carmen has been adapted for numerous cartoons, films, and stage versions. Bizet's lively music, which the composer described as "full of color and melody," alternates between several styles for the different characters: playful children's music, music of the utmost sincerity and piety for Micaëla, pompous and preening music for the toreador Escamillo, Hispanic tunes and dance music for Carmen, and rapturously lyric music for Don José. It is this varied and dazzling music that has continued to attract audiences for generations.

Despite its current international acclaim, the opera's initial run was not so successful. *Carmen* premiered at the Opéra-Comique in Paris on March 3, 1875, after months of delays in rehearsal. Earlier that very day, Bizet's appointment as a Chevalier of the Legion of Honour was announced. Many French musical celebrities were there on opening night, and the audience seemed delighted with the first act. All seemed to portend success. But as the plot continued with Don José's increasing desire for the tempting Carmen despite her growing indifference, the audience became dissatisfied with the opera. The critics were disappointed and upset not only with Bizet's musical style, but also with the amorality of the heroine and her penchant for picking up men and flinging them aside on a whim. Critics also judged the opera too realistic and depressing due to the staged murder of Carmen and Don José's unredeemed descent from bourgeois respectability, especially within the context of the usual *opéra comique* fare of romantic tales with happy endings suitable for family audiences. The chorus was especially dismayed at the demand for realism, as they were told to act like individuals onstage, which upset the norm of merely standing in a line and singing to the audience. In this first run, *Carmen* often played to half-empty houses. A small boost to ticket sales came only after Bizet's early death at the age of 37 on the night of the thirty-third performance; he died believing his work to be a failure.



She says she
wants to be a
singing star!

Helping people achieve dreams and goals is our priority...everyday.

With the right team of financial professionals by your side, you can open and grow a business, purchase real estate, enjoy a fulfilling retirement, and even give your rising star higher education opportunities.

Talk to Bloomington's strong team of financial professionals at German American.



Mark Franklin, Julie Donham, Jane Thoma, Jerry Towle, Everett Southern, Mike Hayes



German American

Banking | Insurance | Investments
Member FDIC

germanamerican.com • (812)355-2265



However, the story of *Carmen* does not end with this tepid French reception, as a modified version of the opera quickly rose to prominence. In October 1875, *Carmen* was staged at the Vienna Court Opera. The original Paris version had dialogue between the musical numbers, the defining feature of *opéra comique*. For Vienna, however, sung dialogue written by Bizet's friend Ernest Guiraud replaced the spoken dialogue in order to create a "grand opera," which also included a ballet in the second act based on Bizet's *L'Arlésienne Suite*. While the ballet has often been discarded, the version of *Carmen* with sung dialogue is the version audiences outside of France know today, though stagings with the original dialogue have become more popular recently. *Carmen*'s success originates in this international reception, where it was enthusiastically received by personalities as diverse as Wagner, Brahms, Tchaikovsky, Otto von Bismarck, and Nietzsche, among others. In fact, it was *Carmen* that inspired Nietzsche to reject Wagner's aesthetics of "brutal sound" for Bizet's "graceful and light" orchestration. In addition, Nietzsche singles out Bizet's tunes and popular song forms, devoid of Wagner's "endless melody" style of composition. Perhaps it is telling that Don José's meandering, lyric music comes closest to the aesthetics of endless melody, and it is his journey into insatiable lust that leads to his and Carmen's ultimate demise. It will also lead to Don José's own unstaged execution, which many early audience members likely knew from the novella.

Even for audiences who were unfamiliar with the story going in to the opera, Don José's fate of unyielding, and fatal, attraction to Carmen is known from the very beginning. Throughout the opera, Bizet uses a musical motif—often called the "fate motif"—to comment on Don José's attraction to Carmen. This figure emerges at the very end of the prelude to the first act when, after the active, celebratory music that will accompany the victorious toreador later in the opera, the prelude suddenly stops. Out of this void comes a shimmering minor chord, followed by a short, but forceful utterance by the cellos. The melodic characteristics of this fate motif evoke images of anguish and the Orient, and in this context, become musical symbols of the exotic gypsy Carmen. The cellos play the motif in different keys, but it never resolves, instead exploding into a highly dissonant chord. It returns throughout the opera whenever Carmen and Don José have a noteworthy interaction: when Carmen drops her flower for Don José in Act I, when he returns to her after being imprisoned in Act II, when Carmen foresees death for them both while fortunetelling in Act III, and immediately before and after he kills her in Act IV. By outlining the course of the drama in the prelude and weaving this unifying motif in between memorable popular songs, Bizet creates an engaging and dynamic opera.

Despite its captivating music, the opera's conclusion can prove unsettling for modern audiences. Scholars have questioned some of the gendered aspects of the opera, debating whether Carmen's death is necessary and whether this has any effect on the ethics of continuing to perform the opera. Some ascribe Carmen's death to "fate," as the opening motif suggests, and argue that Carmen embraces her fate because it is inevitable. Others contend that the ending serves to reassert patriarchal control over Carmen's sexual transgressions and her ethnic Otherness. Bizet's music may even evoke desire in the listener for Don José to dispatch of Carmen in order to resolve the chromatic tension. In a more nuanced reading, Don José is the psychological victim,

CARDINAL
STAGE COMPANY



LOVE, LOSS,
— AND —
WHAT I WORE

MAR 31 - APR 10

— AT THE —
IVY TECH WALDRON AUDITORIUM

Presented in support of



FIND TICKETS TODAY!
cardinalstage.org / 812.336.9300

as there is no place in his culture to indulge in the freedom that Carmen inspires, and this frustration ultimately results in violence. No matter the interpretation, *Carmen* will always end in the heroine's violent death, and it is the audience who must decide whether the pleasure derived from the magnificent music will outweigh the ethical implications of Bizet's magnum opus.

Artistic Staff

Conductor



David Effron's 50-year career has included appearances with major symphonies and opera companies around the globe. He has conducted 105 operas and most of the standard symphonic works. For 18 years, he was on the conducting staff of the New York City Opera, where he conducted many performances, not only in New York, but also with the City Opera residencies in Los Angeles and Washington, D.C. He has

been the music director of the Youngstown Symphony Orchestra and the artistic director of the Central City (Colo.) Opera and the Brevard Music Center (N.C.). For 10 years, he was the general music director of the Heidelberg (Germany) Castle Festival. After his tenure as music director of the Music School Festival Orchestra in Chautauqua, N.Y., the David Effron Fellowship was established. He taught at the Curtis Institute of Music and, for 21 years, was head of the orchestral program at the Eastman School of Music. Since 1998, he has been an active conductor at the IU Jacobs School of Music, where he is a professor of music in the Orchestral Conducting Department. Effron was the conductor of the Grammy Award-winning recording of Copland's *Lincoln Portrait* narrated by William Warfield. His discography also includes a Pantheon recording with soprano Benita Valente, which won the German Record Critics' Award. He earned degrees from the University of Michigan and Indiana University. He was an assistant to Maestro Wolfgang Sawallisch at the Cologne (Germany) Opera House. He has been a Fulbright Scholar and a recipient of a Rockefeller Foundation Grant. He was named Musician of the Year by the National Federation of Music Clubs and was awarded an honorary doctorate from North Carolina State University.

Stage Director



Opera News calls director Jeffrey Marc Buchman "a formidable talent," and the *Miami Herald* claims "Buchman has mastered an art beyond the powers of many directors." Last season, he created the world premiere of Carson Kievman's new opera, *Intelligent Systems*, which was named "Most innovated innovative? production of 2015" by the *Miami Herald*.

His busy season also included a return to Indiana University for *La Bohème*, a new production of *Gianni Schicchi* and *Suor Angelica* for University of Miami, *Così fan tutte* for the Brevard Music Festival, *Don Giovanni* for the Miami Summer Music Festival, Haydn's *Lo Speziale* for the New World School of the Arts, *Manon Lescaut* for Mobile Opera, and *Il Barbiere di Siviglia* for Syracuse Opera. In addition, he created a ground-breaking multimedia arena event for the Grand Rapids Symphony that included over 1,500 performers performing with 3D motions graphics.



IU THEATRE
presents

theatre.indiana.edu

OCCUPANTS
a new play
by Mauricio Miranda



In the 2013-14 season, he created new productions of *La Traviata* for Indiana University, *La tragédie de Carmen* for Syracuse Opera, *Don Giovanni* for UCLA, *Il Barbiere di Siviglia* for the Orlando Philharmonic, *La Cenerentola* for Green Mountain Opera Festival, *Le Nozze di Figaro* for the Miami Summer Music Festival, *L'Elisir d'Amore* for Cincinnati Conservatory of Music's Summer Program, and *No Exit* for Florida Grand Opera, which was named "One of the best and brightest of 2014" by the *Miami Herald*. Buchman also created the world premiere of Carson Kievman's innovative chamber opera, *Fairy Tales: Songs of the Dandelion Woman*. Other recent highlights include Buchman's debut with Atlanta Opera—directing *Carmen*—and a triumphant return to Florida Grand Opera for new productions of *The Magic Flute* and *Rigoletto*, *L'Elisir d'Amore* for Toledo Opera, *Roméo et Juliette* for Intermountain Opera, *Turandot* for Mobile Opera, *South Pacific* for Anchorage Opera, *Il Trovatore* and *Faust* for Opera Naples, *Hansel and Gretel* for Sarasota Opera, and *Cold Sassy Tree* for Sugar Creek Symphony & Song.

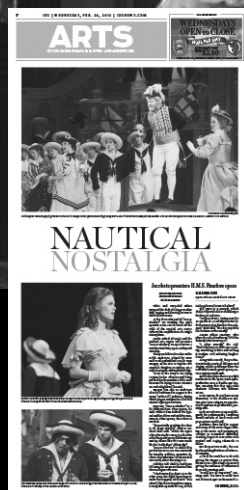
His work with young singers has been extensive. He has directed young artists at Seattle Opera, Florida Grand Opera, Tulsa Opera, Sarasota Opera, Chautauqua Opera, UCLA, Cincinnati Conservatory of Music's Summer Program, Brevard Music Festival, Indiana University, Miami Summer Music Festival, and the New World School of the Arts.

Buchman began his music studies at the Baltimore School for the Arts and later at the Interlochen Arts Academy. He earned a Bachelor of Music in Opera degree from the Boston Conservatory of Music and a Master of Music in Voice degree from the Peabody Conservatory of Music in his native city of Baltimore, Md. He studied German at the Goethe Institut in Prien am Chiemsee, Germany, and Spanish at the Instituto Cervantes. He trained in the Young Artist Program of the Florida Grand Opera, where he later was honored with the company's Evelyn P. Gilbert Award, and also in the Studio and Apprentice Artist programs of Central City Opera, where he was received its Studio Artist of the Year award. Winner of the prestigious Luciano Pavarotti International Voice Competition, Buchman began his work in opera as an acclaimed singer noted for his ability to merge acting and singing. Other prizes include first prize in the National Voice Competition of the National Society of Arts and Letters and a Richard F. Gold career grant from the Shoshana Foundation.

Set and Costume Designer



Robert O'Hearn earned his bachelor's degree from Indiana University in 1943. Now retired, as principal designer for IU Opera and Ballet Theater, O'Hearn designed sets and costumes for more than 40 productions and taught in the Opera Studies program for many years. Prior to coming to IU, he designed sets and costumes for the Metropolitan Opera, Vienna Staatsoper, Vienna Volksoper, Hamburg Staatsoper, New York City Opera, Greater Miami Opera, Houston Grand Opera, Santa Fe Opera, American Ballet Theatre, New York City Ballet, San Francisco Ballet, and Ballet West. O'Hearn served as professor for the Studio and Forum of Stage Design in New York from 1968 to 1988. He has given lectures and classes at Carnegie Mellon, Brandeis, and Penn State University. In 2005, he received the Robert L. B. Tobin Award for Lifetime Achievement in Theatrical Design.



#GetItIU

Be a part of the arts.

The IDS is a proud supporter of the local arts community. Follow the arts scene and find other events at idsnews.com.

We hope you enjoy the performance.



Lighting Designer



Patrick Mero is the head of lighting for IU Opera and Ballet Theater. He has designed the lighting for *La Traviata*, *H.M.S Pinafore*, *Le Nozze di Figaro*, *Werther*, *Falstaff*, *Xerxes*, *Don Giovanni*, *Albert Herring*, *La Bohème*, *Tosca*, *L'Italiana in Algeri*, *West Side Story*, *Il Barbiere di Siviglia*, *Suor Angelica*, *Gianni Schicchi*, and *Alcina*. He has also done extensive design work for the Jacobs School of Music Ballet Department, the IU

African American Art Institute's Dance Ensemble, and Cardinal Stage Company. In addition to his work in Bloomington, he has worked at Spoleto Festival USA. Mero originally hails from Charleston, S.C., but calls Bloomington home.

Chorus Master



Along with his responsibilities as professor of choral conducting and faculty director of opera choruses at the Jacobs School of Music, **Walter Huff** continues his duties as Atlanta Opera chorus master. He has been chorus master for The Atlanta Opera since 1988, preparing the chorus in more than 120 productions and receiving critical acclaim in the United States and abroad. Huff earned his Bachelor of Music degree from the

Oberlin Conservatory and his Master of Music degree from Peabody Conservatory (Johns Hopkins). He studied piano with Sarah Martin, Peter Takács, and Lillian Freundlich, and voice with Flore Wend. After serving as a fellow at Tanglewood Music Center, he received Tanglewood's C. D. Jackson Master Award for Excellence. Huff served as coach with the Peabody Opera Theatre and Washington Opera, and has been musical director for The Atlanta Opera Studio, Georgia State University Opera, and Actor's Express (Atlanta, Ga.).

Bell Trace
applauds the Opera
for enriching our
resident's lives
with the gift of music.

"Music has no limits,
borders or ages."
~ Thalia

BELL TRACE
Exceptional Care,
Extraordinary Caring

812-332-2355 (BELL)
www.BellTrace.com

Bring
Art
to the
World

Study Arts Administration at the
IUB School of Public and
Environmental Affairs



Spring Ballet

FOUR FACES OF BALANCHINE

MARCH

25 7:30 PM | 26 7:30 PM

RAYMONDA VARIATIONS

TARANTELLA

ELEGIE

SERENADE



BALLET
THEATER 15/16

BUY YOUR TICKETS NOW!

MAC Box Office: (812) 855-7433
music.indiana.edu/operaballet

He also has worked as chorus master with San Diego Opera. He served on the faculty at Georgia State University for four years as assistant professor, guest lecturer, and conductor for the Georgia State University Choral Society. Recently, he was one of four Atlanta artists chosen for the first Lordinans Arts Awards, given to Atlanta artists who have made exceptional contributions to the arts life of Atlanta over a long period of time. While serving as chorus master for The Atlanta Opera, Huff has been the music director for The Atlanta Opera High School Opera Institute, a nine-month training program for talented, classically trained high school singers. He has served as chorus master for IU Opera Theater productions of *Don Giovanni*, *The Merry Widow*, *Akhnaten*, *Le Nozze di Figaro*, *Lady Thi Kinh*, *H.M.S. Pinafore*, *La Traviata*, *The Italian Girl in Algiers*, *La Bohème*, *The Last Savage*, *South Pacific*, *Die Zauberflöte*, *Il Barbiere di Siviglia*, *Dead Man Walking*, and *Die Fledermaus*. In June 2015, Huff served as choral instructor and conductor for the Sacred Music Intensive, a workshop inaugurated by the organ and choral departments at the Jacobs School. In addition, he maintains a busy vocal coaching studio in Atlanta.

Children's Chorus Master



Brent Gault has taught elementary and early childhood music courses in Texas, Wisconsin, Connecticut, Pennsylvania, and Indiana. He specializes in elementary general music education, early childhood music education, and Kodály-inspired methodology. Gault also has training in both the Orff and Dalcroze approaches to music education. He has presented sessions and research at conferences of the American

Orff-Schulwerk Association, Dalcroze Society of America, International Kodály Society, International Society for Music Education, Organization of American Kodály Educators, and MENC: The National Association for Music Education. In addition, he has served as a presenter and guest lecturer for colleges and music education organizations in the United States and China. Articles by Gault have been published in various music education periodicals, including the *Bulletin of the Council for Research in Music Education*, *Journal of Research in Music Education*, *Music Educators Journal*, *General Music Today*, *Kodály Envoy*, *Orff Echo*, and *American Dalcroze Journal*. In addition to his duties with the Jacobs School Music Education Department, Gault serves as the program director for the Indiana University Children's Choir, where he conducts the Allegro Choir. He is a past president of the Organization of American Kodály Educators.

Dance Choreographer



Born in Barcelona, Spain, **Rosa Mercedes** is an internationally acclaimed dancer and choreographer in flamenco, escuela bolera, classical Spanish, and regional dance. Trained by many of the world's great Spanish dance masters, she expanded her training to include dance styles such as ballet, jazz, historic, and modern dance, which produced in her a style that combines the power and fire of flamenco with a lyricism and line rarely

seen in Spanish dance. Hailed by *Dance Magazine* as "a virtuoso," her talents have been featured by dance companies, dance festivals, and symphony orchestras throughout the United States and Europe.

As a soloist and principal dancer, she has received great critical acclaim performing throughout the United States, Europe, South America, and Canada with companies including María Benítez's Teatro Flamenco, Compañía Flamenca de Carmen Cortés, Ballet Español de Lucía Real y El Cambario, Ballet Español de Madrid, Zorongo Flamenco Dance Theatre, and Ballet Español Rosita Segovia. She was also rehearsal director and choreographer with the companies of both Maria Benitez and Rosita Segovia.

Mercedes has enjoyed an extensive career in opera and zarzuela under conductors such as James Levine, Marco Armiliato, and Julius Rudel, and alongside major singing talents such as Luciano Pavarotti, Plácido Domingo, Agnes Baltsa, Denyse Graves, and José Carreras. Her work in opera began at the Liceu in Barcelona and led her to being featured as a principal dancer and later as a choreographer with companies such as the Metropolitan Opera, Opera di Roma, Seattle Opera, Atlanta Opera, Michigan Opera Theatre, Dallas Opera, Baltimore Opera, Cincinnati Opera, Florentine Opera, Palm Beach Opera, Austin Lyric Opera, Florida Grand Opera, Opera Lyra Ottawa, Syracuse Opera, Green Mountain Opera, Brevard Music Festival, Tulsa Opera, and many others.

Her versatility in a wide variety of dance styles is demonstrated in her vast repertoire, which includes *Lucia de Lammermoor*, *Il Barbiere di Siviglia*, *Die Zauberflöte*, *Aida*, *La Gioconda*, *Turandot*, *La Traviata*, *Carmen*, *Rigoletto*, *Don Quichotte*, *Don Giovanni*, *Il Trovatore*, *Ainadamar*, *The Passenger*, *Così fan tutte*, *Le Nozze di Figaro*, *La Cenerentola*, *Faust*, *Ballo in Maschera*, *Die Fledermaus*, *Salome*, *The Merry Widow*, *Coronazione di Poppea*, *Roméo et Juliette*, *Madama Butterfly*, *La Vida Breve*, and *Samson et Dalila*.



VOCAL Arts STUDIO

with Meredith Kiesgen Schilling

- Private Singing Lessons
- Master Classes
- Audition Preparation

(812) 219-7865

www.VocalArtsStudio.com

Find out why so many music lovers choose Meadowood...

* IU JSOM Student
Xuan Li



MEADOWOOD

FIVE STAR SENIOR LIVING

2455 Tamarack Trail Bloomington, IN

(812) 336-7060

www.meadowoodretirement.com

Practice recital site for the Jacobs School of Music.

Other career highlights include performances with Savion Glover in Miami on Tap, a gala for UNICEF alongside Audrey Hepburn and Liza Minelli, a special collaboration for the production *Tango* with Armando Orzuza and Daniela Arcuri (of *Evita* and *Tango Pasión*), performances with Luciano Pavarotti, Plácido Domingo, and José Carreras in the Three Tenors Gala with the Metropolitan Opera, concerts with the Gypsy Kings and Sara Montiel, and the internationally televised program *Premios Lo Nuestro* with David Bisbal.

Mercedes is a recipient of several awards, including the Dance Miami Choreographers Fellowship and the ACCA Critics Choice Award in dance. She serves on several grant panels and is a dance panelist and master teacher for the National Foundation for Advancement in the Arts. She has over 30 years of teaching experience and is highly sought after as a master teacher around the world. She also specializes in master classes in movement for singers as well as coaching singers in specific role preparation.

As artistic director of Duende Ballet Español, she created an eclectic repertoire of over 20 works that honor Spain's music, poetry and richly varied dance styles, embracing innovation while preserving and remaining true to Spanish dance traditions.

Fight Choreographer



Matt Herndon is an advanced actor combatant with The Society of American Fight Directors, a Bloomington native, and a graduate of IU (B.A. in Theatre and Drama, 2011). He has choreographed the violence for several local productions, including *Così fan tutte* and *Dead Man Walking* for IU Opera Theater; *Billy Witch*, *She Kills Monsters*, and *Mad Gravity* for the Bloomington Playwrights Project; *king oedipus*, *Macbeth*, *Oleanna*, and *The Rimers of Eldritch* for Ivy Tech Theatre; *The Lieutenant of Inishmore* for University Players; *The Crucible* and *Waiting for Lefty* for Bloomington High School North; *Sonia Flew* for Jewish Theatre of Bloomington; and IU independent productions of *Sunday on the Rocks*, *Closer*, and *Hamlet*. Herndon has also served as the stunt coordinator for several local short films, including *Disdain*, *Daytime*, *Caligo*, *Sequela*, *Team Inspire*, *Born Again*, and *Pilgrimage*.

Diction Coach



Gary Arvin is currently associate professor of vocal coaching, repertoire, and diction at the Jacobs School of Music. Previous credits with IU Opera Theater include serving as diction coach for recent productions of *Werther*, *Cendrillon*, *Faust*, *Roméo et Juliette*, and *The Light in the Piazza*. Before joining the faculty at Indiana University, Arvin was a vocal coach and assistant conductor for Houston Grand Opera, Cincinnati Opera, and Santa Fe Opera, and taught at the American Institute of Musical Studies in Graz, Austria. As a Fulbright Scholar, he studied at the Hochschule für Musik und darstellende Kunst in Vienna after earning degrees in voice and languages from IU and in vocal coaching from the University of Illinois. As a collaborative pianist with singers, he has appeared in recital throughout the United States, Austria, Germany, Czechoslovakia, Finland, and Korea, and distinguished himself as a pianist-collaborator both here and abroad for Gérard Souzay in French *mélodies*, Hans Hotter in German lieder, and Sir Peter Pears in the vocal works of Benjamin Britten. Arvin has recorded for ORF (Austria), National Radio of Finland, National Radio of the Czech Republic, and Sung-Eun Records (Korea).

Supertitle Author



Daniela Siena brings many years of experience in teaching Italian diction and language to singers. She was introduced to operatic diction by Boris Goldovsky, who was seeking a native speaker without teaching experience to work with singers according to his own pedagogical principles. Siena went on to teach in a number of operatic settings (among them, the Curtis Institute of Music, Metropolitan Opera, New York City Opera, and Seattle Opera). Over the years, she worked with a number of well-known singers, including Samuel Ramey, Justino Díaz, Carol Vaness, Wolfgang Brendel, June Anderson, Gianna Rolandi, and Jerry Hadley. The conductors, coaches, and stage directors with whom she has worked include Otto Guth, Max Rudolf, Edoardo Müller, David Effron, Arthur Fagen, Anthony Pappano, Anthony Manoli, Terry Lusk, Dino Yannopoulos, Tito Capobianco, Andrei Șerban, John Cox, and John Copley. At New York City Opera, Siena worked closely with Beverly Sills—as her executive assistant, as a diction coach, and as the creator of English supertitles for a dozen operas. More recently, she worked for two years as a coach for the Young Artists Program of the Los Angeles Opera and, for the past six years, she has taught in Dolora Zajick's summer Institute for Young Dramatic Voices. Born in Florence, Italy, to an Italian mother and a Russian émigré father, Siena arrived in the United States at age seven. She received a B.A. from Sarah Lawrence College and, in her twenties, worked for two years in Italy as secretary to the president of the Olivetti Company. Many years later, she continued her education, earned a master's degree, and became licensed as a psychotherapist by the state of California, where she practiced for 15 years. The mother of two grown children, she moved to Bloomington to be near her son, who lives here with his wife and two young daughters.

EVERYTHING IN ITS PLACE
THE LIFE AND **SLIMES** OF MARC SUMMERS
BY ALEX BRIGHTMAN
WITH MUSIC BY DREW GASPARINI
STARRING MARC SUMMERS

APRIL 1 – 16 @ 7:30
newplays.org 812.323.3020

BPP

Cast

Don José



Trey Smagur is a 25-year-old tenor hailing from Clarkesville, Ga. Last year, he was awarded an encouragement award at the Southeastern Regional Metropolitan Opera Council Auditions. Last summer, Smagur was an apprentice artist at the Des Moines Metro Opera Company, where he will be returning this summer to cover Des Grieux in Massenet's *Manon*. He currently studies voice performance with Carlos Montané at the Jacobs School of Music in pursuit of a performer diploma and was awarded the Georgina Joshi Graduate Fellowship for the 2015-16 academic year. Smagur has performed numerous times at IU, including lead roles in IU Opera Theater's productions of Mozart's *The Magic Flute* (Tamino) and Gilbert and Sullivan's *H.M.S. Pinafore* (Ralph Rackstraw).

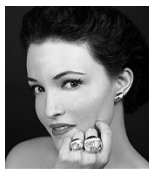


Canadian tenor **Justin Stolz** is currently a graduate student at the Indiana University Jacobs School of Music under the tutelage of Timothy Noble. He is a recent graduate of The Glenn Gould School at The Royal Conservatory of Music, where he studied under Monica Whicher as an Investco Scholarship recipient and a 125 Scholarship recipient. His voice studies began with Mary McGhee in his hometown of Thunder Bay, Ontario. Stolz's recent performance credits include Mr. Owen in Argento's *Postcard from Morocco*, Rodolfo in Puccini's *La Bohème*, Young Gypsy in Rachmaninoff's *Aleko*, Don Ottavio in Mozart's *Don Giovanni*, and Pane in Cavalli's *La Calisto*. Other notable performances include Leon in the Canadian premiere of Milhaud's *La mère coupable* and Count di Belprato in Cagnoni's *Don Bucefalo*. Last fall, Stolz placed first in the Annual S. Livingston Mather Competition in Cleveland, Ohio. His performance tonight as Don José marks his IU Opera Theater debut.

Carmen



Courtney Ellen Bray made her debut in Germany in the title role of Cenerentola in Rossini's *La Cenerentola*. As a singer under contract in Germany, she performed a large and varied repertoire, including opera, operetta, orchestral concerts, and art song recitals. She has appeared as a leading lyric mezzo-soprano in Greece, Poland, Czechoslovakia, Italy, Mexico, and the United States. Roles include Suzuki in *Madame Butterfly*, Giulietta in *The Tales of Hoffmann*, Rosina in *The Barber of Seville*, Maddalena in *Rigoletto*, Mistress Quickly in *Falstaff*, and Iphigénie in *Iphigénie en Tauride*, and scenes as Azucena in *Il Trovatore* and Amneris in *Aida*. In 2006, Bray made her American concert hall debut on the main stage of Carnegie Hall, as a soloist in Mozart's Requiem and Bruckner's Te Deum. She returned to New York to sing at Carnegie again in the United States premiere of Cherubini's *Medée* in the original French version. She has been a featured soloist with the Guanajuato Symphony Orchestra in Mexico. This led to invitations by both the Silesian Philharmonic and the Bohuslav Martinů Philharmonic Orchestra to appear as featured soloist in festival opera concerts. She performed Erda from Wagner's *Das Rheingold* in Teatro Goldoni in Livorno, Italy, and Waltraute's Narrative from *Götterdämmerung* in Oklahoma. As the two-time first-place winner of the Benton-Schmidt Vocal Competition, she earned her master's degree at the University of Oklahoma in May 2013. Bray is currently pursuing a performer diploma at the Jacobs School of Music studying with Carol Vaness.



Spanish soprano **Patricia Illera** is a first-year master's student at Indiana University under the tutelage of Carol Vaness. After pursuing her Bachelor of Medicine degree from the Autonomous University of Madrid, she started her Bachelor in Voice Performance in the Escuela Superior de Canto de Madrid, where she studied with soprano Sara Matarranz and vocal coach Jorge Robaina. Illera then had the opportunity to perform the roles of Paloma in Barberi's *El Barberillo de Lavapiés* and Gertrud in Humperdinck's *Hansel and Gretel*. While a soprano section leader in the Madrid Youth's Choir, she appeared also as a soloist in Vivaldi's *Gloria*, Rossini's *Stabat Mater*, and Mozart's C Minor Mass, among others. She was a winner of the Joven Orquesta y Coro de la Comunidad de Madrid (JORCAM) Competition award and the Academy of International Education scholarship, as well as a finalist in Elda's International Competition and the Magda Olivero International Voice Competition. Illera participated in the European Young Artists Program, performing the roles of Mimi in Puccini's *La Bohème*, Fiordiligi in Mozart's *Così fan tutte*, and several of Zarzuela's roles. She has studied with professional singers such as Santiago Calderón, Nicola Beller, Francesca Roig, Carlos Chausson, Alessandra Althoff, and Ileana Cotrubas, and with vocal coaches such as Giulio Zappa, Borja Mariño, Miquel Ortega, and Alberto Malazzi.

Micaëla



Soprano **Yuji Bae**, a native of South Korea, is a performer diploma student at the Jacobs School of Music. She earned her bachelor's degree in music from Seoul National University (SNU), where she studied with Philip Kang. After earning her B.M. degree from SNU, she studied at Rimini Academia, where she performed the role of Violetta in Verdi's *La Traviata*. She also studied at the Rossini Conservatorio in Pesaro, Italy.

Bae has performed as a rising star in Seoul and in a gala concert in Pesaro, Italy. She is a first-place winner of the Concorso Internazionale Città di Pesaro (summer 2014), first-place winner of the Korea Herald Music Competition, third-place winner of the Music Education News Competition, special-prize winner of the National Teenager Music Competition, and second-place winner of the Bucheon Teenager Music Competition. She sang the role of Pamina in Mozart's *The Magic Flute* last year. Bae is a student of Costanza Cuccaro.



Soprano **Claire Lopatka** is making her solo debut with IU Opera Theater in this production of *Carmen*. She is a senior pursuing her Bachelor of Music in Voice Performance under the tutelage of Heidi Grant Murphy. At IU, she has been privileged to also study with other distinguished faculty members, including Scharmal Schrock and Teresa Kubiak. In Lopatka's hometown of State College, Pa., she began her operatic studies

with Norman Spivey of Penn State University. She spent a summer in France with the Franco-American Vocal Academy and performed the role of Achilles in Offenbach's *La Belle Hélène*. She spent last summer in Utah performing with the Utah Festival, covering the roles of Musetta in Puccini's *La Bohème* and Julie Jordan in Rodgers and Hammerstein's *Carousel*. Lopatka will return to Utah this summer to perform the role of Lauretta in Puccini's *Gianni Schicchi* and to cover Magnolia in Kern and Hammerstein's *Show Boat*.

Escamillo



Ross Coughanour is a baritone from Santaquin, Utah, currently pursuing a master's degree at Indiana University. He earned a B.A. in Vocal Performance from Brigham Young University (BYU) in 2013. While at BYU, Coughanour performed such roles as Papageno in Mozart's *Die Zauberflöte*, Ben in Menotti's *The Telephone*, Guglielmo in Mozart's *Così fan tutte*, Dr. Stone in Menotti's *Help, Help, the Globolinks!*,

Somarone and Leonato in Berlioz's *Béatrice et Bénédict*, and the Duke of Plaza-Toro in Gilbert and Sullivan's *The Gondoliers*. He has also played the Marquiz in Verdi's *La Traviata* with the Utah Lyric Opera, Uncle Bonze in Puccini's *Madama Butterfly* with the Utah Lyric Opera, and Edwin in Gilbert and Sullivan's *Trial by Jury* with Snow College Opera. At IU, he was featured as Mang Ong in the world premiere of P. Q. Phan's *The Tale of Lady Thi Kinh*, Marcello in Puccini's *La Bohème*, Melisso in Handel's *Alcina*, and the Pirate King in Gilbert and Sullivan's *Pirates of Penzance*.



Originally from Fuzhou, Fujian province, China, **Jianan Huang** is a second-year master's student in the Jacobs School of Music and a recent graduate of Adelphi University. At IU, he has sung a baritone solo with the University Choir and made his IU Opera Theater debut as Speaker in Mozart's *The Magic Flute*. He recently made his New York City debut as Guglielmo in Mozart's *Così fan tutte*. In 2014, Huang participated in the

International Vocal Arts Institute Summer Program and sang the role of Belcore from Donizetti's *L'Elisir d'amore*. He also participated in the Manhattan School of Music Summer Opera Program, where he sang the role of Mercurio in Monteverdi's *L'Incoronazione di Poppea*. He has participated in the Opera Breve Vocal Intensive Workshop in Wichita Falls, Texas, for the past two summers, singing the roles of the Count in Mozart's *Le Nozze*

Bloomington Symphony Orchestra

Judgement Day

Shostakovich - Symphony #5

Dvorak - Violin Concerto

Buskirk-Chumley Theater

114 E. Kirkwood

TICKETS

bctboxoffice.com

812-323-3020

May 14
7:30 pm

di Figaro and Marco in Puccini's *Gianni Schicchi*. In 2016, he won second prize of the National Society of Arts and Letters National Annual Awards Competition, and in 2013, he won first prize in the National Association of Teachers of Singing New York City regionals competition. Huang currently studies with Andreas Poulimenos.

Zuniga



Jeremy Gussin, bass-baritone, is a second-year doctoral student studying under Andreas Poulimenos. From Iowa City, Iowa, he completed his undergraduate studies in music education at the University of Wisconsin-Eau Claire (UWEC). While at UWEC, Gussin performed as Papageno in Mozart's *The Magic Flute* with UWEC Opera, sang with the *DownBeat* Award-winning Jazz Ensemble I under the direction of Bob Baca, and

composed for and student-conducted the Singing Statesmen. A strong proponent of contemporary popular music, Gussin participated as a panelist in a discussion on vocal jazz and contemporary a cappella at the national American Choral Directors Association (ACDA) convention in 2013. He arranged two pieces for the "A Community that Sings" initiative at the 2014 North Central Division ACDA convention in Des Moines, Iowa. While at IU, he has performed as a soloist for the Singing Hoosiers and the Vocal Jazz Ensemble under the direction of Ly Wilder and the late Steve Zegree. Gussin has appeared in IU Opera productions of Verdi's *Falstaff* (Pistola), Mozart's *Le Nozze di Figaro* (Antonio), P. Q. Phan's *The Tale of Lady Thi Kinh* (Ly Troung), Menotti's *The Last Savage* (Maharajah), and Heggie's *Dead Man Walking* (Warden). He sings professionally on studio sessions for clients such as Hal Leonard Corporation, Alfred Music, and Lorenz Corporation through Airborne Studios in Zionsville, Ind.



Bass-baritone **Andrew Richardson** is a doctoral student at the Jacobs School of Music. Hailing from South Bend, Ind., he earned his bachelor's degree in vocal performance from DePauw University and his master's degree from Indiana University. While at IU, Richardson has appeared as George Benton (Heggie's *Dead Man Walking*), Rambaldo (Puccini's *La Rondine*), Sarastro and the Second Armored Man (Mozart's *The*

Magic Flute), the Maharajah (Menotti's *The Last Savage*), The Father (Humperdinck's *Hansel and Gretel*), Ariodate (Handel's *Xerxes*), the Notary (Strauss's *Der Rosenkavalier*), Benoit/Alcindoro (Puccini's *La Bohème*), Antonio (Mozart's *Le Nozze di Figaro*), and Wagner (Gounod's *Faust*). He performed the role of Uberto in a special production of Pergolesi's *La serva padrona* at IU. Other performances include Bartolo (*Le Nozze di Figaro*), Simone (Puccini's *Gianni Schicchi*), and Colline (*La Bohème*). Over the summer, Richardson performed Schubert's *Winterreise* at the Green Castle Summer Music Festival as well as in recitals featuring Brahms' *Vier ernste Gesänge* and Schumann's *Liederkreis*, Op. 39. He is a student of Andreas Poulimenos.

Moralès



Mark Billy is a lyric baritone and Native American (Choctaw) from Finley, Okla. His undergraduate studies in voice at the University of Oklahoma (OU) were under the mentorship of baritone Richard Anderson. Billy made his operatic debut as Il Commendatore in OU Opera Theatre's 2012 production of Mozart's *Don Giovanni*. In 2013, he sang the role of Thoas in OU's production of Gluck's *Iphigénie en*

Tauride, and in 2014, he sang the lead role of Simon in OU's choreographed production of Haydn's oratorio *Die Jahreszeiten*. He has also received instruction from legendary

mezzo-soprano Marilyn Horne in both master classes and private lessons. This past fall, he appeared in the chorus for IU Opera's production of Heggie's *Dead Man Walking*. In December 2015, he was featured in an opera workshop as Ford in Verdi's *Falstaff* and as the title role in *Rigoletto*. Billy will sing Lescaut in scenes from Massenet's *Manon* for an opera workshop this April. He studies with soprano Carol Vaness.



Romanian baritone **Teofil Munteanu** is currently a freshman pursuing a B.M. in Voice Performance. He is the recipient of an Indiana University Jacobs School of Music Premier Young Artist Award Scholarship and a Music Faculty Award Scholarship. He sang in Lotte Lehmann Akademie's production of Mozart's *Così fan tutte* and has performed throughout Germany in many recitals. He was the youngest artist in the Sankt Goar

International Music Festival and Academy's Opera Audition session(s). At the academy, Munteanu worked with many artistic directors, pianists, and singers, including soprano Elena Gorshunova, Helmut Deutsch, and Sebastian Schwarz. He has performed in concert with the Phoenix Opera under the baton of John Massaro. Munteanu was most recently seen as a prison guard in IU Opera Theater's 2015 production of Heggie's *Dead Man Walking*. He has studied privately with Gail Dubinbaum and John Massaro. He is currently studying with Andreas Poulimenos.

Frasquita



Soprano **Emma Donahue** is a native of Vinalhaven, Maine. At age 8, she premiered the role of the Migratory Bird in William Bolcom's *The Wind in the Willows* and at age 12, appeared as a soloist in the musical *Islands* on Broadway. She earned her Bachelor of Music degree from the University of Massachusetts Amherst, where her operatic credits include Adina (Donizetti's *L'Elisir d'Amore*), Belinda (Purcell's *Dido and Aeneas*),

Adele (Strauss's *Die Fledermaus*), Nannetta (Verdi's *Falstaff*), and Violetta (Verdi's *La Traviata*). Internationally, she has performed Ismene in Mozart's *Mitridate* in Melbourne and Musetta in *La Bohème* at Opera on the Avalon in Newfoundland. Donahue debuted last year as Queen of the Night in IU Opera Theater's production of Mozart's *The Magic Flute*. Other IU credits include Lisette (Puccini's *La Rondine*), Suor Genovieffa (Puccini's *Suor Angelica*), and Nella (Puccini's *Gianni Schicchi*) with the Vaness Opera Workshop, as well as appearances in Menotti's *The Last Savage* and P. Q. Phan's *The Tale of Lady Thi Kinh*. As a concert soloist, she has sung in Bach's *Magnificat* and Mozart's Requiem with the University Singers, Beethoven's Mass in C Major with the University Chorale, and Barber's *Knoxville: Summer of 1915* with the IU Summer Philharmonic. She currently holds the position of soprano soloist for the Indianapolis Symphony Orchestra's Discovery Concert Series. An IU Artistic Excellence Award recipient, Donahue is pursuing a Master of Music degree as a student of Carol Vaness.



Soprano **Madeline Ley** is completing her master's degree at the Jacobs School of Music. Originally from Elkton, Md., she earned her B.M. in Voice Performance from Wheaton College Conservatory of Music. While there, Ley was a soloist with the Wheaton College Concert Choir in Mozart's Requiem and Aaron Copland's *In the Beginning*. She was also involved in the opera program at Wheaton, where she sang the role

of Hansel in Humperdinck's *Hansel and Gretel* and sang in Mozart opera scenes as Pamina in *Die Zauberflöte*, Susanna in *Le Nozze di Figaro*, and Zerlina from *Don Giovanni*. In summer of 2011, Ley studied opera at the Manhattan School of Music, where she sang in

the scenes program as Mercedes from *Carmen* and Third Lady from *Die Zauberflöte*. Before finishing her undergraduate studies, she studied abroad with Oberlin in Italy, where she sang the scenes of the role of Zenobia from Handel's *Radamisto* and in the chorus of Puccini's *La Bohème*. At IU, she has performed as Kätchen in Massenet's *Werther* and in the chorus for P. Q. Phan's *The Tale of Lady Thi Kinh*, Puccini's *La Bohème*, and Mozart's *The Magic Flute*. She is a student of Timothy Noble.

Mercédès



Chelsea DeLorenz is a mezzo-soprano from Garland, Texas, in her second year of graduate studies under the tutelage of Patricia Stiles. She previously attended The University of Texas at Austin, where she graduated Phi Beta Kappa with degrees in both Spanish and voice performance. This past summer, DeLorenz performed the title role in Massenet's *Cendrillon* with the Miami Summer Music Festival. Other recent credits include the roles of Ruth (*Pirates of Penzance*) with the University Gilbert & Sullivan Society, Hansel (Humperdinck's *Hansel and Gretel*), and Susanna Walcott (Ward's *The Crucible*).



Mezzo-soprano **Marianthi Hatzis** is pursuing her Bachelor of Music degree at the Jacobs School of Music. She is a recipient of the Dean's Scholarship and studies with Patricia Stiles. Hatzis has appeared with IU Opera Theater as Zulma in Rossini's *L'Italiana in Algeri* and Liat in Rodgers and Hammerstein's *South Pacific*. She has performed the role of Second Woman and was the understudy of Dido in *Dido and Aeneas* with Lefkas Music in Lefkada, Greece. Additionally, she has appeared with New Voices Opera in its Fall Exhibition as the title mezzo role in Kimberly Osberg's opera *Thump*. She has also performed in the Jacobs School of Music's Summer Opera Workshop as Poppea in Monteverdi's *L'incoronazione di Poppea* and Giannetta in Donizetti's *L'Elisir d'Amore*. Hatzis has appeared as a soloist in IU's contemporary vocal ensemble NOTUS, University Singers, and Conductors' Chorus, and was a member of Eric Whitacre's Chicago premiere of *Paradise Lost: Shadows and Wings*. She won first place in the Indianapolis Matinee Musicale Competition and first place in the Fourth-Year College Women division of the Indiana National Association of Teachers of Singing Chapter. She has performed for audiences such as the Metropolitan Iakovos of Chicago and the Greek Archdiocese of Chicago. She will be singing in the Young Artist Program of SongFest this May with a full-tuition scholarship. A native of Greece, she lives in Chicago and plans to continue her studies in Europe this coming year.

Le Dancaïre



Andres Acosta is a first-year graduate student at the Jacobs School of Music studying with Carlos Montané. Acosta, a Miami, Fla., native, earned his undergraduate degree from Florida State University as a part of David Okerlund's studio. He made his IU Opera debut as Alfred in Strauss's *Die Fledermaus* earlier this season. He has recently portrayed the roles of Ferrando in Mozart's *Così fan tutte*, Sellem in Stravinsky's *The Rake's Progress*, Don Ottavio in Mozart's *Don Giovanni*, and Sam Kaplan in Kurt Weill's *Street Scene*. Acosta was awarded the Judy George Junior Young Artist First Prize Award in the 2015 Young Patronesses of the Opera Voice Competition. He was nominated as 2014 Humanitarian of the Year at Florida State University and is recognized as a Brautlecht Estate Endowed and Music Guild Scholar.



Baritone **Benjamin Seiwert** is a senior pursuing a B.M. in Voice Performance at Indiana University. While at IU, he has performed the roles of The Painter and English Tailor in *The Last Savage* by Menotti and The Motorcycle Cop in *Dead Man Walking* by Heggie. He has also performed the roles of Lord Tolloller from *Iolanthe* and Samuel from *The Pirates of Penzance* with the University Gilbert & Sullivan Society.

Seiwert has sung in several opera choruses, including Massenet's *Cendrillon*, Verdi's *Falstaff*, Mozart's *Le Nozze di Figaro*, Gilbert and Sullivan's *H.M.S. Pinafore*, Rossini's *L'Italiani in Algeri*, Menotti's *The Last Savage*, and Rodgers and Hammerstein's *South Pacific*. He is a student of Patricia Stiles.

Le Remendado



Tenor **Darian Clonts**, a native of Atlanta, Ga., is in the final year of his Master of Music in Voice Performance degree at the Jacobs School of Music. He made his debut with IU Opera Theater singing the role of Parpignol in the 2014 production of Puccini's *La Bohème*. He earned his Bachelor of Arts degree in 2012 from Morehouse College in Atlanta, Ga., where he studied voice with Uzee Brown Jr. In 2011, Clonts was awarded

second place in the vocal solo competition of the Metropolitan Atlanta Musicians Association's branch of the National Association of Negro Musicians. He joined The Atlanta Opera for the 2012-13 season and performed in its productions of Bizet's *Carmen*, Verdi's *La Traviata*, and Rossini's *L'Italiana in Algeri*. He attended the Princeton Festival in the summer of 2014, where he performed in *Porgy and Bess* as a member of the chorus and a soloist. Clonts previously performed in the IU Opera Theater production of *The Last Savage* as Scientist. He also has previously appeared at IU in Gilbert and Sullivan's *H.M.S. Pinafore*, Rossini's *L'Italiana in Algeri*, Mozart's *The Magic Flute*, and Strauss's *Die Fledermaus* as a member of the chorus. He performed the role of Bob Boles in Britten's *Peter Grimes* in opera workshop under the direction of Carol Vaness and is a student of Brian Horne.



Tenor **Max Zander** is in the second year of his master's degree studies. During his tenure at IU, he has appeared as Dr. Blind in Strauss's *Die Fledermaus*, Basilio in Mozart's *Le Nozze di Figaro*, Bardolfo in Verdi's *Falstaff*, Njegus in Lehár's *The Merry Widow*, Rabbi in Menotti's *The Last Savage*, Modiste/Liveryman in Massenet's *Cendrillon*, and various characters in *Candide* as well as in the choruses of numerous other productions. Zander has also appeared as Prunier in Puccini's *La Rondine* with Carol Vaness's Graduate Opera Workshop and as Tolloller in the University Gilbert & Sullivan Society's inaugural production of *Iolanthe*. His other operatic credits include Nemorino in Donizetti's *L'Elisir d'Amore* with the Montefeltro Festival in Italy, Flute in Britten's *A Midsummer Night's Dream* and Monostatos in Mozart's *The Magic Flute* with the Halifax Summer Opera Festival in Canada, and Borsa in *Rigoletto* with the North Shore Music Festival. As a festival artist with Utah Festival Opera & Musical Theatre, Zander sang the roles of Parpignol in Puccini's *La Bohème* and Anselmo in *Man of La Mancha*. He covered the roles of Sancho in *Man of La Mancha* and J. Pierrepont Finch in *How to Succeed in Business Without Really Trying*. He will return to the MAC stage for *Oklahoma!*, his sixteenth IU Opera production. He is a native of Great Neck, N.Y., and is currently a student of Patricia Stiles.

Philharmonic Orchestra

Violin I

Yerim Lee
Andrew Cheshire
Skye Kinlaw
Max Ramage
Sofia Kim
Jason Chen
Bonnie Lee
Michael Su
Callum Smart
Janani Sivakumar
Jonathan Yi
Jonathan Chern
Katherine Floriano

Violin II

Jacqueline Kitzmiller
Jimin Lim
Christine Lau
Gaia Ramsdell
Joseph Ohkubo
Clara Scholtes
Kathryn Chamberlain
Christopher Leonard
Jeong Won Kim
Jieun Park

Viola

Evan Robinson
Yonsung Lee
Mara Arredondo
Ke Zhang
Mason Spencer
Christopher Alley
Kimberly Hankins
Elizabeth Oka

Cello

Guilherme Monegatto
Hyeok Kwon

Cello (cont.)

Kelly Knox
David Dietz
Justin Goldsmith
Keeon Guzman
Lindy Tsai
Adrian Golay

Bass

Kyle Sanborn
Jack Henning
Lindsay Bobyak
John Bunc

Flute/Piccolo

Carole Pouzar
Elspeth Hayden

Oboe

Gabriel Young
Anish Pandit, *English*

Horn

Clarinet

Thomas Wilson
Zachary Stump

Bassoon

Conor Bell
David Carter

Horn

Ian Petruzzi
Nicolas Perez
Orlando Medrano
Drew Wright

Trumpet

Jacob Hook
Michael Edalgo

Trombone

Matthew Williamson
Ashley Cox
Christopher Jordan, *Bass*

Timpani

Alana Wiesing

Percussion

Alexander Skov
Victoria Nelson
Joel Castro-Lawicki

Harp

Seika Dong

Banda

Sean Burdette, *Trumpet*
Christopher Pate, *Trumpet*
Matthew Blauvelt, *Trombone*
Eric Hung, *Trombone*
Jackson McLellan, *Trombone*

Orchestra Manager

Lindsay Bobyak

Orchestra Set-Up

Lindsay Bobyak
Skye Kinlaw
Christine Lau
Bonnie Lee

Librarian

Alizabath Nowland

Student Production Staff

Assistant ConductorDanko Drusko
Assistant Director.	Hallie Stebbins
Coach Accompanist.	Louis Lohraseb
Associate Opera Chorus Master.	Michaela Calzaretta
Assistant Opera Chorus MasterHan Na Jang
Children's Chorus Rehearsal AccompanistKartika Putri
Head Fly PersonNate Bleeker
Deck SupervisorsHunter Rivera, Sarah Schaefer
Deck Crew	Harper Humphrey, Allen Karel, Ellen Mills Faith Mystak, Ulises Ramirez, Kyle Resener Rosa Schaefer, Jonathan Smith
Electrics SupervisorsAlexis Jarson, Betsy Way
Electrics Crew	Glen Axthelm, Esprit Canada, Corwin Deckward Lucy Knorr, William Lusk, Lucy Morrell, Angela Owens Evan Pruitt, Lucas Raub, June Tomastic, Sasha Wiesenbahn
Props Master	Olivia Dagley
Paint Supervisors	Amber McCoy, Marcus Simmons
Paint Crew	Olivia Dagley, Lynn Glick Nathanael Hein, Melissa Krueger, Kayla Listenberg Gabrielle Ma, Jóhann Schram-Reed, Michael Schuler Audrey Stephens, Macey White, Christy Wisenhahn
Wig, Hair, and Makeup Assistant.Eileen Jennings, Amy Wooster
Costume Crew	Mackenzie Allen, Maggie Andriani Tyler Dowdy, Leah Gaston, Kayla Eldridge Colin Ellis, Caroline Jamsa, Kaity Jellison Allie Hutchinson, Lily Overmyer, Imani Sailors Amanda Sesler, Nell Vandeveld Mary Whistler, Amy Wooster
Supertitle OperatorShin-Yeong Noh
Audio/Video Production Crew	William Chen, Nathan Kane Bryce Ferendo, Levi Reece, Misha Ulmet

Jacobs School of Music Honor Roll

Calendar Year 2015

Individual, Corporate, and Foundation Supporters

The Jacobs School of Music wishes to recognize those individuals, corporations, and foundations that have made contributions to the school between January 1, 2015, and December 31, 2015. Those listed here are among the Jacobs School's most dedicated and involved benefactors, and it is their outstanding generosity that enables the IU Jacobs School of Music to continue to be the finest institution of its kind in the nation.

———— \$1,000,000 and Up ————

The Estate of Barbara M. Jacobs
David H. Jacobs

Louise Addicott-Joshi and Yatish Joshi

———— \$100,000 - \$999,999 ————

Aileen Chitwood*
Ted W. Jones

———— \$10,000 - \$99,999 ————

Jamey and Sara Aebersold
Gary and Kathy Anderson
Carol V. Brown
J. Peter Burkholder and P. Douglas
McKinney
Luba Edlina-Dubinsky
James and Elizabeth Ericksen
Mary Kratz Gasser

Frank C. Graves and Christine Dugan
Ruth E. Johnson
Sarah Clevenger
Monika and Peter Kroener
Shalin C. Liu
William F. Milligan*
Regina Momgaudas
Richard and Barbara Schilling

The Estate of Virginia Schmucker
Curt and Judy Simic
Kim and Scott Storbeck
Robert D. Sullivan
Charles and Lisa Surack
Mimi Zweig

———— \$5,000 - \$9,999 ————

S. Sue Aramian
Theodore W. Batterman
Jack and Pam Burks
R. Park and Louise Carmon
Susan Cartland-Bode and Henry J. Bode
Ethel and William Gofen
Jay and Karen Goodgold

Lenore S. Hatfield
Richard and Alice Johnson
Katherine C. Lazervitz
Perry J. Maull
Jon A. Olson
Al and Lynn Reichle
Jeannette and Harold Segel

Eric C. Trefelner
Brett and Diane Varner
Mary H. Wennerstrom and Leonard M.
Phillips*
Nancy and Allen White
Theodore S. Widlanski
Michael J. Williamson and Kathy Weston

———— \$1,000 - \$4,999 ————

Charles and Donald Allen
Ann C. Anderson
Kenneth and Georgia Aronoff
Linda A. Baker
Nicholas M. Barbaro and Sue Ellen Scheppeke
Robert Barker and Patsy Fell-Barker
Brett and Amy Battjer
Norma B. Beversdorf-Rezits and
Joseph M. Rezits
W. Michael Brittenback and William
Meezan
Mary and Schuyler Buck
William and Anita Cast
Marcella and Scott Caulfield
Jerald and Megan Chester
Joyce E. Clafflin
James and Carol Clauser
Mark and Katy Cobb
Carol and John Cornwell
William and Marion Crawford
Jay and Jacqueline Dickinson
Gary L. and Sandra G. Dowty
Jane and D. Kim Dunnick
Nile and Lois Dusdieker
Joseph R. Fickle
Jane M. Fricke
Gabriel P. Frommer*
Jack and Linda Gill

Alan and Margaret Golston
Rita B. Grunwald
Rusty and Ann Harrison
Dale C. Hedding
Bernhard C. Heiden*
Jerome and Lucinda Hey
J. Stanley and Alice Hillis
L. Scott and Donna J. Horrall
Nancy O. Hublar
Patricia C. Jones
Robert and Lisa Jones
Linda and Kenneth Kaczmarek
Thomas and Gail* Kasdorf
John Kincaid and Mary Soper
Vicki and Thomas King
George and Cathy Korinek
John and Nancy Korzec
Judith and Dennis Leatherman
P. A. Mack, Jr.
Gary and Carol Matula
Darby Earles McCarty
Janet and George McDonald
Susann H. McDonald
Geraldine and John Miller
Siri Montecino
Craig C. Morris and Jeffrey C. Brown
John and Barbara Morris
James Neff and Susan Jacobs-Neff

Del and Letty Newkirk
Gary and Susan Noonan
Joan C. Olcott
Ora H. Pescovitz
Gary and Christine Potter
George and Wendy Powell

Nancy P. Rayfield
Al and Lynn Reichle
Gwyn and Barbara Richards
Martha and Jeffrey Sherman
W. Richard Shindle
Jefferson and Mary Shreve
George and Regiana Sistevaris
Janet S. Smith
W. Craig Spence
James and Susan Stamper
Ellen Strommen
Linda Strommen
Mark A. Sudeith
Bruce and Madelyn Tribble
Robert M. VanBesien
Mark and Gail Welch
Alan and Elizabeth Whaley
Beth Stoner Wiegand and Bruce R.
Wiegand
Doris Wittenburg and Harlan Lewis
Laura Youens-Wexler and Richard Wexler

\$500 - \$999

Susan L. Adams
Margaret and Charles Athey
Karen and John Bailey
C. Matthew Balensuela
Joan Brand and Andre Watts
Roberta Brokaw
Mary and Montgomery Brown
Jean A. Burkholder
Jonathan D. Chu
Miriam S. Clarke
J. Neal Cox
Ray and Molly Cramer
Ed and Jane Daum
Melissa and Eric Dickson
David B. Edgeworth
Stephen A. Ehrlich
Donald and Sandra Freund
Charles L. Fugo
Jann and Jon Fujimoto
Suzanne and Frank Gault
Gene F. Hedrick
Constance and James Glen
Alan R. Goldhammer
John and Susan Graham
Jean-Louis Haguenauer
Carolyn and Richard Haile

Yasunori Hattori
Gene and Judy Hedrick
Carter and Kathleen Henrich
Allan Hershfield and Alexandra Young
Jolaine L. Hill
Larry and Susan Hodapp
Rona Hokanson
Jim Holland
William and Karol Hope
Robert J. Hublar
Jeffrey S. Jepsen
Michael W. Judd
Midori Kataoka
Marilyn Bone Kloss
Virginia A. Krauss
James W. and Evelyn LaFollette
Jon and Susan Lewis
David and Julie Lohrmann
Barbara and John Lombardo
Emilia P. Martins and Michael Lynch
Carmen Hinkle McGrae
Clarence and Susan Miller
Edward J. Mitro
James and Jacqueline Morris
Timothy Morrison and Linda Hunt
Dana R. Navarro

Sujal and Elizabeth Patel
P. Q. Phan
Edward and Lois Rath
Scott and Katherine Riley
Clyde R. Rose
Randy Schekman and Nancy Walls
Scharmal K. Schrock
Richard C. Searles
Odette F. Shepherd
Anthony and Jan Shipp
James B. Sinclair
Lee Ann Smith and Mark C. Webb
Michael R. St John
Janis M. Stockhouse
Kitty Tavel
Karen M. Taylor, D.M.
Susan C. Thrasher
James and Cheryl Topolus
Richard E. Walker
Rebecca and Wayne Weaver
Carolyn A. White
E. G. and Sharon White
David L. Wicker
Susan and David Young

\$250 - \$499

Neal and Elizabeth Abdullah
James F. Ault
Sandra C. Balmer
Samuel and Janet Baltzer
Brian M. Barnicle
Charles and Gladys Bartholomew
Susan D. Bartlett
Robert W. Bastian
Mark K. Bear
Frederick and Beth Behning
Michelle Bergonzi
Susan and Myron Bloom
Karen and Arthur Bortolini
Elizabeth M. Brannon
Philip and Elizabeth Capasso
Eric Christ
Nelda Christ*
Cynthia and Alfred Cirome
Richard K. Cook
R. Kent Cook
Katherine R. Covington
Gretchen E. Craig
William A. Crowle
Cheryl and Bradley Cunningham
Michael G. Cunningham
Lawrence L. Davis
Mary A. Diaz-Przybyl
Clarence and Judith Doninger
Thomas and Katherine Eggleston
Peter E. Ellefson
Mark and Jennifer Famous
Hollis and Robert Gaston
Liliana and Dan Gehring
Inge and Michael Gerber
Ross A. Gombiner
Mary A. Gray
Kenneth C. Green
Bertram and Susan Greenspan

Debra and John Hatmaker
William D. Haworth
Ruth and Lowell Hoffman
Chris Holmes and David Burkhart
Annette and Owen Hungerford
Michele J. Johns and Robert Johns
Kathleen L. Johnson
Kristin and Wayne Jones
Russell L. Jones
Carol R. Kelly
Melissa Kevorkian and Jack Fields
Jillian L. Kinzie and Joseph Throckmorton
Karen and Taka Kling
Howard and Linda Klug
Martin and Janie Kocman
George J. Kozacik
Laura Kress and Jay Sissom
Kathleen C. Laws
Gregory and Veronica Leffler
Luther T. Lemley
Amy L. Letson
Marie T. Lutz
Bryan L. Mack
Brian D. Marcus
Carolyn Marlow and William Teltser
Lissa and Philip May
Thomas and Norma McComb
Phyllis and Jerry McCullough
Ellen L. McGlothlin
Ralph and Shirley Melton
Kathleen and Emanuel Mickel
Ben F. Miller
Matthew and Maryann Mindrum
Patrick and Frances Mitchell
G. Scott Mitchell and Rosalind Burwell
Jan T. Mixer
Lorna L. Moir
Anne C. Newman

Ambrose Ng
Julia and Omar Nielsen
Donna and Timothy Noble
Robert and Ruth Palmer Robert and
Pamela Phillips
Donna and Robin Poynor
Robert L. Ralston
Phyllis and Jack Relyea
Joann Richardson
Mary A. Rickert
Paul and Barbara Ristau
David and Orli Robertson
Jerry and Cynthia Robinson
Roger Roe
Bruce Ronkin and Janet Zipes
Linda J. Rosenthal
Eugene and Norma Rousseau
John and Donna Sasse
Jon and Bambi Saxe
Cecile and Kenneth Schubert
Catharine Schutzius and John Dugan
Christopher and Janet Schwabe
Edward S. Selby
David and Barbara Sheldon
Sue A. Shepard and Donald Helgeson
Laurelyn and Michael Simons
Robert L. Smith and Janice L. Lesniak
Dennis L. Stewart
Fanfen Tai and Charles Lin
Dana W. Taylor
Mary and Donald Trainor
Violette Verdy
John and Tamyra Verheul
Teresa and Peter Wolf
Giovanni Zanovello
Conrad and Debora Zimmermann

\$100 - \$249

Lois C. Adams Miller
Ann H. Adinamis Impicciche
James A. Allison
George Alter and Elyce Retolla
Joseph and Sharon Amlung

Paula J. Amrod
Stella N. Anderson
Carol and R. K. Antill
Kimi W. Atchason
Judith Auer and George Lawrence

Mary K. Aylsworth
James and Mary Babb
Carolyn A. Balfe
Wesley A. Ballenger
Daniel C. Balog

Pamela Pfeifer Banks
David Bannard and Mary Ashley
John and Patricia Barnes
Allison and Mark Barno
Patricia W. Barrett
Robert R. Bartalot
Paula and John Bates
Sue A. Beaty
James and Lynda Beckel
Judy and Martin Becker
Suzanne K. Belbutroski
David N. Bergin
Olesia O. Bihun
Renee and Wilhelm Bilgram
Cheryl A. Bintz
David and Judy Blackwell
Adam R. Blais
Ronald and Regina Blais
Gayle and Heinz Blankenburg
Julian M. Blumenthal
John and Mary Blutenthal
Michael and Pamela Bobb
Francis and Kay Borkowski
Ruth and Christopher Borman
Joan H. Bowden
Cynthia and Bennet Brabson
Jeffrey L. Bransford
Peter W. Brengel
Laurie Brown and Daniel Carroll
Edward P. Bruenjes
Margaret and Philip Brummit
William R. Buck
Sarah Bullen and Dyan Peterson
Aaron M. Burkhardt
Betsy L. Burleigh
Margaret G. Burns
John N. Burrows
Doris J. Burton
V. Barbara Bush
Rebecca C. Butler
W. Leland and Diane Butder
Margaret R. Buttermore
James and Carol Campbell
Phyllip B. Campbell
James and Ellen Carmichael
Mary and Stephen Carter
Linda L. Case
Susan and Robert Cave
Harriet R. Chase
Matthew Christ and Sophia Goodman
Dianne and Lawrence Christensen
David Clark and Diane Coutre
Steve and Sonya Clark
William B. Clay
Lynda Clendenning and Robert Fuller
Richard and Lynn Cohee
Bradley and Michele Cohron
Robert and Marcia Coleman
James D. Collier
Mark R. Conrad
Sheryl and Montgomery Cordell
Kevin and Laura Cottrill
Lynda M. Couch
Nora B. Courier
Diane Courtre
Gary and Ellen Covel
Cynthia M. Crago
Ernest and Roxanna Crawford
Lowell and Sondra Crow
J. Daniel and Mary Cunningham
Donna and David Dalton
John T. Dalton
Eugene B. Daniels
Janice E. Daniels
Gerald and Mary Danielson
John D. Danielson
John and Carol Dare

Lenore S. Davis
Conrad J. Dejong
Imelda Delgado
Barbara and Richard Dell
Mary L. Denne
Patrick and Karen Dessent
Susan and Dominic* Devito
Deborah J. Deyo-Howe
Roger D. Dickerson
Nadine and Holm Diercks
Barbara and Richard Domek
Ruth Dostie
Sharon and John Downey
Beth and John Drewes
Margaret J. Duffin
Gregory S. Dugan
Kevin J. Duggins
Alan and Juliet Duncanson
Maira and Timothy Dyczko
Mary A. Dye
Dale and Edith Dzubay
Silbisy S. Eastman
Robert and Robin Eatman
Patricia Eckstein
Frank and Vickie Edmondson
Anne and John Egan
Joseph E. Elliott
Anna and Charles* Ellis
Michael J. Ellis
Mary and Herman Emmert
Stanley and Pamela Engle
Lucille I. Erb
Deborah and Jeffrey Ewald
Mark Feldstein
David N. Fienen
Mary E. Fine
Donald and Myra Fisher
Laurie and Patrick Flynn
William and Eleanor Folley
Constance C. Ford
Linda A. Frauenhoff
Michael and Teresa Frye
Sean F. Gabriel
Melva F. Gage
Thomas E. Gerber
Susann Gilbert
Elizabeth and Robert Glassey
Lorraine Glass-Harris
James S. Godowns
Walter A. Goldreich
Sylvia S. Gormley
Arlene Goter
Patricia Goyette-Gill and Richard Gill
Susan E. Grathwohl
Robert and Sheri Gray
Linda J. Greaif
Gretchen M. Green
Pamela C. Griffel
Roberta M. Gumbel
Nola and John Gustafson
Christine Haack and Mark Hood
Chun-Fang B. Hahn
Patricia L. Hales
Larry and Barbara Hall
Steve and Jo Ellen Ham
Robert and Janet Hamilton
Donald M. Hankins
Charlene A. Harb
John and Teresa Harbaugh
Christopher and Roxanne Hare
Jeffrey M. Harris
Martha and Stephen Harris
Robert and Deborah Hartigan
Steven and Karen Hartjes
F. Michael and Skaidrite Hatfield
Clayton and Ellen Heath
Lynn Holding and Blake Wilson

Helen and Kimball Henderson
Rebecca Henry and Monte Schwarzwalder
Florence E. Hiatt
Leslie W. Hicken
Patricia L. Hicks
Linda Higginbotham and Bradley
Leftwich
Ford D. Hill
Suzanne L. Hillis
William Hillyard and Carrie Bruner
Laura J. Hilmert
Joe and Marianne Hinds
Harvey B. Holly
Nicholas and Katherine Holzmer
Julian L. Hook
Harlow and Harriet Hopkins
Joseph H. Hopkins
Judith and Dennis Hopkinson
Sallie and Robert* Horner
Emily L. Hostetter
Jacqueline and Robert Hounchell
Donald W. Howe
Patricia and Thomas Howenstine
Robert B. Huber
Cindy and John Hughes
Ivan and Anne Hughes
Marcia A. Hughes
Masanori and Seiko Igarashi
Stefanie Jacob and Scott Tisdell
Jennifer A. Jafari
Carole L. James
Charles and Laurie Jarrett
Warren W. Jaworski
Kathryn and Robert Jessup
Martin D. Joachim
Edith E. Johnson
Hollis R. Johnson
Thomas and Marilyn Johnson
Marilyn J. Keiser
Janet Kelsay
Linda and James Kern
Rachel and Donald Kessler
Myrna M. Killey
John and Julianne King
Meredith K. Kirkpatrick
Karen L. Klages
Lee A. Kohlmeier
Laszlo and Joanne Kovacs
Joseph C. Kraus
Glen Kwok and Chih-Yi Chen
Judy and Larry Lafferty
Aaron D. Lan
Thomas and Nancy Lancaster
Beverly Landis and Alan Billingsley
Nicholas R. Lang
Lois B. Lantz
Arthur W. Larson
Randy L. Leazenby
Debra and Robert Lee
Kristin M. Lensch
Anna Leppert-Largent and Gregory
Largent
Mary and Timothy Lerzak
Stine Levy and Arthur Koch
Jerry and Jane Lewis
Joseph J. Lewis
Ann and Scott Liberman
Nancy Liley
Lynn and Matthew Litwiller
Guy and Connie Loftman
Warren E. Loomis
Charles Lopinto
Alma E. Lyle
Joan I. Lynch
Frances M. Madachy
Robert W. Magnuson
David and Barbara Malson

Mayer and Ellen Mandelbaum
 Leslie and Joseph Manfredo
 Lynne and Richard Marks
 Lisa K. Marum
 John M. Maryn
 Joel and Sandra Mathias
 Matthew and Kelly Mayer
 Philip and Elizabeth McClintock
 Gregory and Margaret McClure
 Marie M. McCord
 David McDonald
 Winnifred and Francis McGinnis
 Jerry A. and Jane P. McIntosh
 James L. McLay
 James D. McLuckie
 Mary Jo McMillan
 Marcia and Michael McNeley
 Sean M. McNeley
 Ted and Bess Megremis
 Katherine and Gerald Mehner
 Edith and Glenn Mellow
 Lynn and David Meyer
 Judith E. Miller
 Mary A. Miller
 Ronald and Joyce Miller
 Thomas J. Miller
 Linda M. Mintener and Robert M. Jones
 Joseph T. Mitchell
 Richard J. Mlynarski
 Jay E. Montgomery
 Teresa Moore
 Patricia and Philip Moreau
 T. Earline Moulder and R. David Plank
 Patricia and John Mulholland
 Dwight R. Mumper
 Ronald L. Munson
 Ann Murray and Michael Hurtubise
 Ray and Wendy Muston
 Dean and Carol Myshrrall
 George and Diane Nadaf
 Yury M. Nedelin
 Helen Rapp Nefkens and Bernard
 Nefkens
 Bud E. Nelson
 Lynn S. Nestler
 Kent and Gail* Newbury
 Kathleen C. Nicely
 Kenneth H. Nichols
 Carroll E. Nichols
 Gloria G. Noone
 Margaret V. Norman
 Lisa and Frank Nothaft
 David and Diane O'Hagan
 Melinda P. O'Neal
 George and Nancy Osborne
 Mary A. Owings
 Janet and William Palfe
 Mara Parker and Andrew Cogbill
 Sandra B. Parker
 Peggy W. Paschall
 Marilyn J. Patton
 George and Elsie Peffley
 Ronald A. Pennington
 Kathie I. Perrett
 Wayne H. Peterson
 Norman and Sue Pfau
 Gaye S. Platt
 Jeffrey L. Plonski
 Belinda Potoma and Michael Fish
 Frona and Ronald Powell
 Gregory Powell and Miriam McLeod Powell
 Sylvanna T. Precht
 John R. Preer
 Ronald and Joan Preloger
 Richard and Mary Pretat
 Patricia and Thomas Price
 Edward Rath

John A. Rathgeb
 Diana and Alan Rawizza
 Mary and William Record
 Helen P. Reich
 David and Leanna Renfro
 Jean and Donald Rhoads
 Carolyn J. Rice
 Timothy J. Riffle and Sarah M. McConnell
 Donald E. Ritter
 Alice E. Robbins
 Samuel and Valerie Roberts
 Murray and Sue Robinson
 Donna and Edward Ronco
 Anthony Ross and Beth Rapier
 Anya and Ronald Royce
 Gerald J. Rudman
 Irving L. Sablosky
 Janice Salvucci
 Roy and Mary Samuels
 Michael W. Sanders
 Randa K. Sanders
 V. Gayle Sarber
 Mark and Anne Sauter
 Richard K. Schall
 Susan and Stephen Schlegel
 Arthur and Carole Schreiber
 Deborah S. Schwartz
 Perry and Lisa Scott
 Beverly Scott and Sylvia Patterson-Scott
 Laurie and William Sears
 Richard and Ilene Sears
 Robert and Ellen Sedlack
 John A. Seest
 Gillian and Uri Sella
 Maria and Peter Selzer
 Nancy and Stephen Shane
 Nadine E. Shank
 Merry and John Shapiro
 Richard and Margaret Shelly
 Richard and Karen Shepherd
 Larry and Debra Sherer
 Nathan and Joline Short
 Thomas and Donna Shriner
 W. Robert and Jill Siddall
 Samuel and Theresa Sievers
 Catherine A. Smith
 Elwood L. Smith
 Estus Smith
 John and Juel Smith
 Linda K. Smith
 Monte and Rita Smith
 Lucille Snell
 John and Laura Snyder
 Marilyn K. Solomon
 James and Carolyn Sowinski
 Paul V. Spade
 Tom and Linda Sperling
 Darell and Susan Stachelski
 Gary and Anne Steigerwald
 Robert Stockton and Moya Andrews
 Christel and Robert Stoll
 Tom and Melinda Straley
 James L. Strause
 Eric and Etsuko Strohecker
 Jessica Suchy-Pilalis and Labros Pilalis
 Rhonda and Gregory Swanson
 Elizabeth Szymanski
 Leaetta and Rick Taffinger
 Arthur S. Takeuchi
 Sandra and Lawrence Tavel
 Kathleen A. Taylor
 Artemisia and Theodore Thevaos
 Shelley Thomason
 William C. Thompson
 Elaine and Philip Thrasher
 Diana and Joseph Tompa
 Aaron and Mary Lee Tosky

Jonathan Towne and Rebecca Noreen
 Alice and Philip Trimble
 Cheryl Tschanz and William Newkirk
 Linda J. Tucker
 Melody and Dale Turner
 Mary E. Ulrey
 Matthew S. Underwood
 Dianne Vars
 Matthew and Therese Veldman
 Venu Vemuri
 Lisa Ventura
 Sue and Daniel Visscher
 Matthew Vitale
 Sharon P. Wagner
 Barbara J. Waite
 Cheryl and Raymond Waldman
 Jeffrey and Debra Walker
 Cynthia and Jay Wallin
 Elizabeth and Timothy Wappes
 Sarah F. Ward
 Sally and Mark Watson
 Thomas J. Weakley
 Daniel Weiss
 Phyllis C. Werrime
 Roger and Barbara Wesby
 John and Mary Whalin
 Allen and Cheryl White
 James T. White
 Lloyd and Barbara White
 Diane and James Whitlock
 Tony J. Wiederhold
 Thelma J. Wilcox
 Patricia L. Williams
 Lawrence A. Wilson
 Dolores Wilson
 Carl Wiuff
 Donna and Richard Wolf
 Joyce M. Woltman
 Blue B. Woman
 Susan M. Wood
 Eric A. Woodhams
 Earl S. Woodworth
 Karen and Danny Wright
 G. Eugene Yates
 Jamie and Rick Yemm
 Mark A. Yother
 Mijai Youn Auh
 Christopher Young and Brenda Brenner
 Judith and Steven Young
 Jeffery P. Zaring
 Joyce R. Zastrow
 Joan Zegree and Spider Kedelsky
 Joyce and Larry Zimmerman
 David W. Zinsmeister
 Timothy and Sara Zwickl

* Deceased

Corporations and Foundations

———— \$100,000 and Up ————

Dorothy Richard Starling Foundation

———— \$25,000 - \$99,999 ————

Barbro Osher Pro Suecia Foundation
Harry Kraus Survivor Trust

The Seven Kids Foundation, Inc.

Summer Star Foundation for Nature, Art
and Humanity, Inc.

———— \$10,000 - \$24,999 ————

David Jacobs Fine Art
The DBJ Foundation
EH2, LLC
Fremonty, LLC
Indiana Charitable Trust

Medtronic, Inc. Foundation
Miraflorés Investments, LLC
Old National Wealth Management
Oregon Gardens, LLC
Presser Foundation

Smithville Communications, Inc.
Stirllife Construction of California, Inc.
Sweetwater Sound, Inc.

———— \$1,000 - \$9,999 ————

Avedis Zildjian Company
Bloomington Classical Guitar Society Inc.
Bloomington Community Band, Inc.
C. E. And S. Foundation Inc.
Camerata, Inc.
Eli Lilly & Company
Fidelity Charitable Gift Fund

Greater Kansas City Community Foundation
The Harvey Phillips Foundation Inc.
Indiana University Alumni Association
Kalamazoo Community Foundation
National Christian Foundation Greater
Chicago
National Society of Arts & Letters

Opera Illinois League
Paulsen Family Foundation
Robert Carwithen Music Foundation
Schwab Charitable Fund
Vanguard Charitable Endowment Program
The Walt Disney Foundation

Annual Giving Circles

The Indiana University Jacobs School of Music Annual Giving Circles include individuals dedicated to making a difference in the cultural life of the university. These unrestricted gifts of opportunity capital support the areas of greatest need, including financial aid, faculty research, academic opportunities, and visiting artists.

Dean's Circle

Visionary Members

———— \$10,000 and Up ————

Gary and Kathy Anderson
David H. Jacobs

Monika and Peter Kroener
Charles and Lisa Surack

Strategic Members

———— \$5,000 - \$9,999 ————

S. Sue Aramian
Theodore W. Batterman

Jack and Pam Burks
Jay and Karen Goodgold

Richard and Alice Johnson
Jeannette and Harold Segel

Supporting Members

———— \$2,500 - \$4,999 ————

Nicholas M. Barbaro and Sue Ellen Schepcke
William and Marion Crawford
Jack and Linda Gill

Rusty and Ann Harrison
Darby Earles McCarty
Del and Letty Newkirk

Al and Lynn Reichle
Mark A. Sudeith
Michael J. Williamson and Kathy Weston

Contributing Members

———— \$1,000 - \$2,499 ————

Ann C. Anderson
Linda A. Baker
Robert Barker and Patsy Fell-Barker
W. Michael Brittenback and William
Meezan
William and Anita Cast
Jerald and Megan Chester

James and Carol Clauser
Mark and Katy Cobb
Carol and John Cornwell
Jane and D. Kim Dunnick
Gabriel P. Frommer
Dale C. Hedding
J. Stanley and Alice Hillis

Patricia C. Jones
Robert and Lisa Jones
Linda and Kenneth Kaczmarek
Thomas and Gail* Kasdorf
Vicki and Thomas King
George and Cathy Korinek
John and Nancy Korzec

P. A. Mack, Jr.
Geraldine and John Miller
John and Barbara Morris
Joan C. Olcott

Ora H. Pescovitz
Gary and Christine Potter
Jefferson and Mary Shreve
W. Craig Spence

Bruce and Madelyn Tribble
Robert M. VanBesien
Beth Stoner Wiegand and Bruce R. Wiegand

Artist's Circle

\$500 - \$999

Susan L. Adams
Margaret and Charles Athey
Mary and Montgomery Brown
Miriam S. Clarke
Melissa and Eric Dickson
Nile and Lois Dusdieker
Charles L. Fugo
John and Susan Graham
Carolyn and Richard Haile
Carter and Kathleen Henrich
Jolaine L. Hill
William and Karol Hope
Jeffrey S. Jepsen

Marilyn Bone Kloss
Virginia A. Krauss
James W. and Evelyn LaFollette
Jon and Susan Lewis
Barbara and John Lombardo
Emilia P. Martins and Michael Lynch
Carmen Hinkle McGrae
Edward J. Mitro
Jim and Jackie Morris
Dana R. Navarro
Sujal and Elizabeth Patel
Scott and Katherine Riley
Clyde R. Rose

Randy Schekman and Nancy Walls
Scharmal K. Schrock
Richard Searles
Anthony and Jan Shipp
James B. Sinclair
Lee Ann Smith and Mark C. Webb
Janis M. Stockhouse
Ellen Strommen
Richard E. Walker
Rebecca and Wayne Weaver
E. G. and Sharon White
David L. Wicker

\$250 - \$499

Samuel and Janet Baltzer
Charles and Gladys Bartholomew
Robert W. Bastian
Mark K. Bear
Karen and Arthur Bortolini
Elizabeth M. Brannon
R. Kent Cook
Katherine R. Covington
William A. Crowle
Cheryl and Bradley Cunningham
Michael G. Cunningham
Mary A. Diaz-Przybyl
Clarence H. and Judith Doninger
Mark and Jennifer Famous
Liliana and Dan Gehring
Ross A. Gombiner
Bertram and Susan Greenspan
Sheila Hass
William D. Haworth

Ruth and Lowell Hoffman
Annette and Owen Hungerford
Russell L. Jones
Carol R. Kelly
Jillian L. Kinzie and Joseph Throckmorton
Howard and Linda Klug
Kathleen C. Laws
Gregory and Veronica Leffler
Amy L. Letson
Marie T. Lutz
Brian D. Marcus
Carolyn M. Marlow and William A. Teltser
Lissa and Philip May
Jerry W. and Phyllis McCullough
Kathleen and Emanuel Mickel
Matthew and Maryann Mindrum
Patrick and Frances Mitchell
Ambrose Ng
Robert and Ruth Palmer

Donna and Robin Poynor
Edward and Lois Rath
Phyllis and Jack Relyea
Mary Ann Rickert
Paul and Barbara Ristau
Jerry and Cynthia Robinson
Roger Roe
Bruce E. Ronkin and Janet L. Zipes
Linda J. Rosenthal
Catharine Schutzius and John Dugan
Christopher and Janet Schwabe
Edward S. Selby
David and Barbara Sheldon
Sue A. Shepard and Donald Helgeson
Robert L. Smith and Janice L. Lesniak
Dana W. Taylor
John and Tamyra Verheul
Teresa and Peter Wolf

\$100 - \$249

Lois C. Adams Miller
Joseph and Sharon Amlung
Paula J. Amrod
Stella N. Anderson
Kimi W. Atchason
Judith Auer and George Lawrence
Mary K. Aylsworth
James and Mary Babb
Carolyn A. Balfé
Pamela L. Banks
David Bannard and Mary Ashley
John and Patricia Barnes
Patricia W. Barrett
Robert R. Bartalot
Susan D. Bartlett
Sue A. Beaty
James and Lynda Beckel
Judy and Martin Becker
Suzanne K. Belbutoski
David N. Bergin
Olesia O. Bihun
Renee and Wilhelm Bilgram
Cheryl A. Bintz
David and Judy Blackwell
Ronald and Regina Blais
Gayle and Heinz Blankenburg
Michael and Pamela Bobb
Ruth and Christopher Borman

Joan H. Bowden
Peter W. Brengel
Robert Brokaw
Laurie Brown and Daniel Carroll
Margaret and Philip Brummit
William R. Buck
Aaron M. Burkhardt
Margaret G. Burns
John N. Burrows
Doris J. Burton
Rebecca C. Butler
Margaret R. Buttermore
James and Ellen Carmichael
Mary and Stephen Carter
Susan and Robert Cave
Harriet R. Chase
Dianne and Lawrence Christensen
Cynthia and Alfred Cirome
David Clark and Diane Coutre
Richard and Lynn Cohee
Bradley and Michele Cohron
Robert and Marcia Coleman
Mark R. Conrad
Richard K. Cook
Sheryl and Montgomery Cordell
Diane Courtre
Cynthia M. Crago
Ernest and Roxanna Crawford

Donna and David Dalton
John T. Dalton
Eugene B. Daniels
Janice E. Daniels
Gerald and Mary Danielson
John D. Danielson
John and Carol Dare
Lenore S. Davis
Conrad J. Dejong
Imelda Delgado
Barbara and Richard Dell
Mary Lynn Denne
Patrick and Karen Dessent
Susan and Dominic* Devito
Deborah J. Deyo-Howe
Roger D. Dickerson
Barbara and Richard Domek
Sharon and John Downey
Margaret J. Duffin
Kevin J. Duggins
Alan and Juliet Duncanson
Dale and Edith Dzubay
Silsby S. Eastman
Robert and Robin Eatman
Frank and Vickie Edmondson
Anne-Marie and John Egan
Joseph E. Elliott
Michael J. Ellis

Mary and Herman Emmert
 Stanley and Pamela Engle
 Lucille I. Erb
 Mary E. Fine
 Constance C. Ford
 Sean F. Gabriel
 Melva F. Gage
 Thomas E. Gerber
 James S. Godowns
 Walter A. Goldreich
 Sylvia S. Gormley
 Arlene Goter
 Patricia Goyette-Gill and Richard Gill
 Robert and Sheri Gray
 Linda J. Greafe
 Pamela C. Griffel
 Roberta M. Gumbel
 Nola and John Gustafson
 Chun-Fang B. Hahn
 Patricia L. Hales
 Charlene A. Harb
 Jeffry M. Harris
 Martha and Stephen Harris
 Robert and Deborah Hartigan
 Debra and John Hatmaker
 Clayton and Ellen Heath
 Lynn Holding and Blake Wilson
 Helen and Kimball Henderson
 Rebecca Henry and Monte Schwarzwaldner
 Florence E. Hiatt
 Suzanne L. Hillis
 William Hillyard and Carrie Bruner
 Joe and Marianne Hinds
 Nicholas and Katherine Holzman
 Harlow and Harriet Hopkins
 Joseph H. Hopkins
 Judith and Dennis Hopkinson
 Sallie and Robert* Horner
 Emily L. Hostetter
 Jacqueline and Robert Houchell
 Donald W. Howe
 Ivan and Anne Hughes
 Masanori and Seiko Igarashi
 Stefanie Jacob and Scott Tisdell
 Jennifer A. Jafari
 Carole L. James
 Warren W. Jaworski
 Kathryn and Robert Jessup
 Martin D. Joachim
 John and Julianne King
 Edith E. Johnson
 Kathleen L. Johnson
 Janet Kelsay
 Rachel and Donald Kessler
 Melissa Kevorkian and Jack Fields
 Myrna M. Killey
 John and Julianne King
 Lee A. Kohlmeier
 Joseph C. Kraus
 Thomas and Nancy Lancaster
 Nicholas R. Lang
 Lois B. Lantz
 Arthur W. Larson
 Debra and Robert Lee
 Mary and Timothy Lerzak
 Stine Levy and Arthur Koch
 Joseph J. Lewis

Nancy Liley
 Warren E. Loomis
 Charles Lopinto
 Joan I. Lynch
 Frances M. Madachy
 Mayer and Ellen Mandelbaum
 Lynne and Richard Marks
 Lisa K. Marum
 John M. Maryn
 Joel and Sandra Mathias
 Philip and Elizabeth McClintock
 Winnifred and Francis McGinnis
 Ellen L. McGlothlin
 James D. McLuckie
 Mary Jo McMillan
 Sean M. McNelly
 Edith and Glenn Mellow
 Ralph and Shirley Melton
 Lynn and David Meyer
 Judith E. Miller
 Mary A. Miller
 Ronald and Joyce Miller
 Joseph T. Mitchell
 Terresa Moore
 Patricia and Philip Moreau
 Dwight R. Mumper
 Ann Murray and Michael Hurtubise
 George and Diane Nadaf
 Yuri M. Nedelin
 Helen and Bernard Nefkens
 Bud E. Nelson
 Lynn S. Nestler
 Kathleen C. Nicely
 Kenneth H. Nichols
 Julia and Omar Nielsen
 Gloria G. Noone
 Margaret V. Norman
 Lisa and Frank Nothaft
 David and Diane O'Hagan
 George and Nancy Osborne
 Mary A. Owings
 Mara Parker and Andrew Cogbill
 Peggy W. Paschall
 Kathie I. Perrett
 Wayne H. Peterson
 Jeffrey L. Plonski
 Frona and Ronald Powell
 Gregory Powell and Miriam McLeod Powell
 Sylvanna T. Prechtel
 Patricia and Thomas Price
 Diana and Alan Rawizza
 Mary and William Record
 Helen P. Reich
 David and Leanna Renfro
 Jean and Donald Rhoads
 Carolyn J. Rice
 Donald E. Ritter
 Donna and Edward Ronco
 Anthony Ross and Beth Rapier
 Janice Salvucci
 Michael W. Sanders
 Randa K. Sanders
 Virginia G. Sarber
 Mark and Anne Sauter
 Richard K. Schall
 Susan and Stephen Schlegel
 Arthur and Carole Schreiber

Perry and Lisa Scott
 Beverly Scott and Sylvia Patterson-Scott
 Laurie and William Sears
 Richard and Ilene Sears
 Robert and Ellen Sedlack
 Nancy and Stephen Shane
 Nadine E. Shank
 Merry and John Shapiro
 Richard and Karen Shepherd
 Nathan and Joline Short
 Thomas and Donna Shriner
 W. Robert and Jill Siddall
 Elwood L. Smith
 Estus Smith
 Linda K. Smith
 John and Laura Snyder
 Tom and Linda Sperling
 Darell and Susan Stachelski
 Tom and Melinda Straley
 James L. Strause
 Rhonda and Gregory Swanson
 Kathleen A. Taylor
 William C. Thompson
 Diana and Joseph Tompa
 Jonathan Towne and Rebecca Noreen
 Alice and Philip Trimble
 Cheryl Tschanz and William Newkirk
 Linda J. Tucker
 Matthew S. Underwood
 Dianne Vars
 Venu Vemuri
 Lisa Ventura
 Matthew Vitale
 Barbara J. Waite
 Cheryl and Raymond Waldman
 Jeffrey and Debra Walker
 Sarah F. Ward
 Sally and Mark Watson
 Daniel Weiss
 John and Mary Whalin
 Allen and Cheryl White
 Lloyd and Barbara White
 Thelma J. Wilcox
 Dolores Wilson
 Lawrence A. Wilson
 Carl Wiuff
 Donna and Richard Wolf
 Blue B. Woman
 Susan M. Wood
 Eric A. Woodhams
 Karen and Danny Wright
 Mark A. Yother
 Joyce R. Zastrow
 Joyce and Larry Zimmerman
 Timothy and Sara Zwickl

Leadership Circle

Members of the Leadership Circle have contributed lifetime gifts of \$100,000 or more to the Indiana University Jacobs School of Music. We gratefully acknowledge the following donors, whose generosity helps the school reach new heights and build a sound financial framework for the future.

Over \$10,000,000

The Estate of Barbara M. Jacobs
David H. Jacobs

The DBJ Foundation
Lilly Endowment, Inc.

Over \$1,000,000

Louise Addicott-Joshi and Yatish Joshi
Gary and Kathy Anderson
The Estate of Ione B. Auer
Cook, Inc.
Dorothy Richard Starling Foundation

The Estate of Juanita M. Evans
Georgina Joshi Foundation, Inc.
Jack and Linda Gill
Jack* and Dora Hamlin
Krannert Charitable Trust

The Estate of Juana Mendel
The Estate of Clara L. Nothhacksberger
The Estate of Paul and Anne Plummer

\$500,000 - \$999,999

Arthur R Metz Foundation
Alexander S. Bernstein
Jamie Bernstein
Nina Bernstein Simmons
The Estate of George A. Blique, Jr.
Jack and Pam Burks
Carl and Marcy Cook

Gayle T. Cook
The Estate of Frederick G. and Mary M.
Freeburne
Wilbert W. Gasser* and Mary Kratz Gasser
Ann and Gordon Getty
The Estate of Eva M. Heinritz
Sandy Littlefield

Robert R. O'Hearn
Murray and Sue Robinson
Richard and Barbara Schilling
The Estate of Eva Sebok
The Estate of Ruth E. Thompson
The Estate of Herman B Wells

\$250,000 - \$499,999

Jamey and Sara Acbersold
The Estate of Wilfred C. Bain
Olimpia F. Barbera
The Estate of Angeline M. Battista
Beatrice P. Delany Charitable Trust
The Estate of Sylvia F. Budd
The Estate of Marvin Carmack
Christel DeHaan Family Foundation
Christel DeHaan
The Estate of Alvin M. Ehret, Jr.
The Estate of Lucille de Espinosa
The Estate of Richard E. Ford
The Estate of Frederick G. Freeburne
Rusty and Ann Harrison
The Estate of Emma B. Horn

IBM Global Services
Irwin-Sweeney-Miller Foundation
The Estate of Harold R. Janitz
Monika and Peter Kroener
Shalin C. Liu
The Estate of Jeanette Calkins Marchant
The Estate of Nina Neal
Presser Foundation
The Estate of Ben B. Raney
Joy and Rudolph* Rasin
The Estate of Virginia Schmucker
The Estate of Lee E. Schroeder
Scott C. and Kay Schurz
The Estate of Maidee H. Seward
Bren Simon

The Cynthia L. & William E. Simon, Jr.
Foundation
Cynthia L. and William E. Simon
David and Jacqueline Simon
Deborah J. Simon
Herbert and Porntip Simon
The Estate of Melvin Simon
The Estate of Samuel and Martha Siurua
Paul and Cynthia Simon Skjodt
Summer Star Foundation for Nature, Art
and Humanity, Inc.
Marianne W. Tobias
The Estate of John D. Winters

\$100,000 - \$249,999

The Estate of Ursula Apel
Artur Balsam Foundation
The Estate of Robert D. Aungst
Robert Barker and Patsy Fell-Barker
Henry J. Bode and Susan Cardland-Bode
Bennet and Cynthia Brabson
Brabson Library and Education Foundation
The Estate of Jean R. Branch
The Estate of Mildred J. Brannon
The Estate of Frances A. Brockman
The Estate of Aileen Chitwood
Cole & Kate Porter Memorial Graduate
Fellowship in Music Trust
Jean and Doris Creek
The Estate of Mavis M. Crow
Susie J. Dewey
The Estate of M. Patricia Doyle
The Estate of William H. Earles
The Estate of Robert A. Edwards
Marianne V. Felton

Ford Meter Box Foundation, Inc.
The Estate of Thomas L. Gentry
Georgia Wash Holbeck Living Trust
Paul and Ellen Gignilliat
The Estate of Monroe A. Gilbert
The Estate of Theodore C. Grams
The Estate of Marjorie Gravitt
The Estate of David C. Hall
Steve and Jo Ellen Ham
The Estate of Margaret H. Hamlin
Robert and Sandra Harrison
Harrison Steel Castings Company
F. Michael and Skaidrite Hatfield
The Estate of Jascha Heifetz
Joan & Marvin Carmack Foundation
Ruth E. Johnson
Ted W. Jones
The Estate of Eugene Knapik
Robert and Sara LeBien
George William Little, Jr. and B. Bailey Little

P. A. Mack, Jr.
David and Neill Marriot
Susann H. McDonald
The Estate of Margaret E. Miller
The Estate of Elisabeth P. Myers
The Estate of Jean P. Nay
The Estate of Richard J. Osborn
Penn Asset Equity LLC
The Estate of Charlotte Reeves
The Estate of William D. Rhodes
The Estate of Dagmar K. Riley
Stephen Russell and Mag Cole Russell
Fred and Arline Simon
Smithville Telephone Company, Inc.
The Estate of Maxine M. Talbot
Technicolor USA, Inc.
The Estate of Alice C. Thompson
The Estate of Mary C. Tilton
Mary H. Wennerstrom and Leonard M.
Phillips*

The Legacy Society

The Legacy Society at the Indiana University Jacobs School of Music honors the following individuals who have included the Jacobs School as a beneficiary under their wills, trusts, life insurance policies, retirement plans, and other estate-planning arrangements.

David* and Ruth Albright

Richard and Ann Alden

Gary and Kathy Anderson

John and Adelia Anderson

Margaret K. Bachman

Dennis and Virginia Bamber

Mark and Ann* Bear

Christa-Maria Beardsley

Michael E. Bent

Julian M. Blumenthal

Richard and Mary Bradford

W. Michael Brittenback and William

Meezan

Pamela S. Buell

Louise Caldwell*

Gerald and Elizabeth Calkins

Marvin Catmack*

Sarah Clevenger

Jack and Claire Cruse

Doris* and John* Curran

D. Michael Donathan

Luba Dubinsky

Stephany A. Dunfee

Sandra Elkins

H. C. Engles

Eleanor R. Fell*

Michael J. Finton

Debra Ford

Frederick* and Mary* Freeburne

Donald and Marcella Gercken

Ken W. Grandstaff*

Jonathan L. Gripe

Jack* and Dora Hamlin

Charles Handelman

James R. Hasler

Helen I. Havens*

David M. Holcenberg

Julian L. Hook

William T. And Kathryn* Hopkins

David E. Huggins

Harriet Ivey

Walter* and Bernice* Jones

Myrna M. Killey

Martha Klemm

Herbert Kuebler and Phil Evans

C. Ray and Lynn Lewis

Harlan L. Lewis and Doris F. Wittenburg

Nancy Liley

Ann B. Lilly

George and Brenda Little

P. A. Mack, Jr.

Jeanette Calkins Marchant*

Charles J. Marlatt

Kent and Susan McCray

Douglas McLain

Donald and Sonna Merk

Robert A. Mix

Cyndi Dewees Nelson and Dale Nelson

Del and Letty Newkirk

Fred Opie and Melanie S. Spewock

Richard* and Eleanor* Osborn

Arthur Panousis*

John and Margaret Parke

Gilbert* and Marie* Peart

Jean and Charles* Peters

Mary H. Wennerstrom and Leonard M.

Phillips*

Jack W. Porter

Nancy Gray Puckett

Stanley E. Ransom

Clare G. Rayner*

Al and Lynn Reichle

Gwyn and Barbara Richards

Ilona Richey

Murray and Sue Robinson

D. Patricia and John W.* Ryan

Roy and Mary Samuelsen

George P. Sappenfield*

Vicki J. Schaeffer

John and Lorna Seward

Odetta F. Shepherd

Curt and Judy Simic

Donald G. Sisler*

Catherine A. Smith

George P. Smith, II

Steve and Mary Snider

William and Elizabeth Strauss

Robert D. Sullivan

Hans* and Alice M. Tischler

Jeffrey S. Tunis

Henry and Celicia Upper

Nicoletta Valletti

Robert Waller and Linda Bow

Patrice M. Ward-Steinman

Charles and Kenda* Webb

Michael D. Weiss

Robert E.* and Patricia L. Williams

Michael J. Williamson and Kathy Weston

* Deceased



Friends of Music Honor Roll

Calendar Year 2015

The mission of the Society of the Friends of Music is to raise scholarship funds for deserving, talented students at the Indiana University Jacobs School of Music. The society was established in 1964 by a small group led by Herman B Wells and Wilfred C. Bain. We are pleased to acknowledge outright gifts made between January 1, 2015, and December 31, 2015.

Guarantor Scholarship Circle

Cole Porter

—— \$5,000 - \$9,999 ——

Nelda M. Christ*
Susie J. Dewey

Jeanette Calkins Marchant*

Friends of Music

—— \$10,000 and Above ——

Eleanor F. Byrnes
Jeanette Calkins Marchant*

The Estate of Ben B. Raney

—— \$5,000 - \$9,999 ——

Robert Barker and Patsy Fell-Barker
Joshua D. Bell

Susie J. Dewey
Steve and Jo Ellen Ham

Richard and Barbara Schilling
Karen Shaw

Herman B Wells Circle

Gold

—— \$2,500 - \$4,999 ——

Nelda M. Christ*
John H. Heiney*
Lawrence and Celeste Hurst

Herbert Kuebler and Phil Evans
Julia and Charles McClary

President Michael A. McRobbie and First
Lady Laurie Burns McRobbie
Murray and Sue Robinson

Silver

—— \$1,000 - \$2,499 ——

Ruth Albright
Diana and Rodger Alexander
James and Susan Alling
John and Teresa Ayres
W. Leland and Helen M. Butler
William and Anita Cast
Edward S. Clark
Gayle K. Cook
Jean and Doris Creek
Frank Eberle and Cathy Cooper
Harvey and Phyllis Feigenbaum
Anne T. Fraker
Jim and Joyce Grandorf

Robert R. Greig
Peter P. Jacobi
Cecily Jenkins
Jennifer A. Johnson
Susan M. Klein and Robert Agranoff
George and Cathy Korinek
Terry Loucks
Cyndi Dewees Nelson and Dale Nelson
Del and Letty Newkirk
Alan, Shelley, and Kelsey Newman
Lenny and Lou Newman
Ora H. Pescovitz, M.D.
Gunther and Doris Rodatz

Judith L. Schroeder and Edward Mongoven
Phyllis C. Schwitzer
Curtis and Judy Simic
L. Robert and Sylvia Stohler
Gregg and Judy Summerville
Susan B. Wallace
Eric Weistein
Miki C. Weistein
J. William Whitaker, M.D. and Joan M.
Whitaker
Barbara L. Wolf and Robert J. Goulet, Jr.
Galen Wood

*Deceased

Dean Wilfred C. Bain Circle

Patrons

— \$500 - \$999 —

James and Ruth Allen
Gary and Kathy Anderson
Margaret K. Bachman
Olimpia F. Barbera
Jack and Pam Burks
Carter and Allyson Cast
Charles and Helen Coghlan
Vivian L. Counts
Mary A. Cox and James M. Koch
Dr. and Mrs. Fred W. Dahling
Carol J. Dilks
James V. and Jacqueline C. Faris
Robert and Ann Harman
Carter and Kathleen Henrich
Elizabeth J. Hewitt and Richard H. Small
Richard and Lois Holl

Athena and Frank* Hrisomalos
Jeffrey and Lesa Huber
Diane S. Humphrey
Linda and Kenneth Kaczmarek
Martin and Linda Kaplan
Vicki and Thomas King
Howard and Linda Klug
Jhani Laupus and Michael M. Sample
Judith A. Mahy-Shiffrin and Richard M. Shiffrin
Eugene O'Brien
Edward and Patricia O'Day
Stephen R. Pock and David Blumberg
John and Lislott Richardson
Edward and Janet Ryan
L. David Sabbagh and Linda L. Simon

Randy Schekman and Nancy Walls
Marilyn F. Schultz
Scott C. and Kay Schurz
Anthony and Jan Shippis
Lee Ann Smith and Mark C. Webb
Kathryn and Alan Somers
William and Anna Stewart
Bruce and Shannon Storm
Ellen Strommen
Henry and Celicia Upper
Martha F. Wailes
Mary H. Wennerstrom and Leonard M. Phillips*
Doris F. Wittenburg and Harlan L. Lewis
Judith and Steven Young
John and Linda Zimmermann

Sustainers

— \$300 - \$499 —

Shirley Bell
Gerald and Elizabeth Calkins
James and Carol Campbell
Sarah Clevenger
Karen-Cherie Cogane and Stephen Orel
Bart and Cinda S. Culver
Lee and Eleanor Dodge
Sterling and Melinda Doster
Beth and John Drewes
Donald and Sandra Freund
Michael and Patricia Gleeson
Jay and Sandra Habig

Ralph E. Hamon, Jr.
R. Victor Harnack
John B. Hartley and Paul W. Borg, Ph.D.
Lenore S. Hatfield
Steven L. Hendricks
Ernest N. Hite and Joan E. Pauls
Margaret and Donald Jones
Monika and Peter Kroener
Ayelet E. Lindenstrauss and Michael J. Larsen
P. A. Mack, Jr.
David and Catherine Martin
James L. McLay

Geraldine and John Miller
Dawn E. Morley
Roger and Ruth Newton
Carl B. Rexroad and Carol Pierce
Kathleen C. Ruesink
Linda Strommen
Lewis H. Strouse
Kenneth and Marcia VanderLinden
Philip and Shandon Whistler
Patricia L. Williams
Jerry and Joan Wright

Donors

— \$100 - \$299 —

Evelyn and Richard Anderson
Carolyn A. Bailey
Donna M. Baiocchi
Elizabeth Baker and Richard Pugh
Mark J. Baker
David and Judith Barnett
Patricia and Robert Bayer
Mark K. Bear
Thomas Beddow
David and Ingrid Beery
Sharon M. Berenson
Eva and Ernest Bernhardt-Kabisch
Norma B. Beversdorf-Rezits and Joseph M. Rezits
Richard E. Bishop
Ellen R. Boruff
P. Delbert Brinkman, Ph.D., and Carolyn L. Brinkman
Jaclyn and Bill Brizzard
Susan E. Burk
Ann F. Burke
Derek and Marilyn Burleson
Cathleen Cameron
Beatrice and Gerald Carlyss
Gayle and Robert Chesebro
Donald and Shirley Colglazier
Ann L. Connors
David Crandall and Saul Blanco
Jeffrey L. Davidson and Pamela Jones Davidson

Julia DeHonn
Jason Derrick
Susan and Dominic* Devito
Deborah Divan
David and Jennie Drasin
David A. Drinkwater
Danny and Jeanette Duncan
J. Michael and Sarah Dunn
David and Arlene Effron
Stephen A. Ehrlich
Peter and Pearl Ekstrom
Mary K. Emison
Richard and Susan Ferguson
Robert and Geraldine Ferguson
Steve and Connie Ferguson
Joseph P. Fiacable
George and Jo Fielding
Bruce and Betty Fowler
Sharon and Norman Funk
Bernardino and Caterina Ghetti
Jeffrey and Toby Gill
Elizabeth and Robert Glassey
Constance and James Glen
Vincent M. Golik
Robert D. Goyette
Henry H. Gray
Robert A. Green
Diane and Thomas Gregory
Jerry and Linda Gregory
Samuel and Phyllis Guskin

Kenneth and Judy Hamilton
Stanley and Hilary Hamilton
Andrew J. Hanson and Patricia L. Foster
Kenneth and Janet Harker
Pierrette Harris
Robert and Emily Harrison
James Richard Hasler
Carol L. Hayes
Barbara J. Henn*
Sandra L. Hertling*
Anna T. Hewell
John D. Hobson
Rona Hokanson
Norman and Judy Holy
Takeo and Tamaki Hoshi
Roger and Carol Isaacs
Warren W. Jaworski
Margaret T. Jenny and John T. Fearnside
Anna L. Jeger
Martin D. Joachim
Keith and Doris Johnson
Lora D. Johnson
Burton and Eleanor Jones
Gwen J. Kaag
Marilyn J. Keiser
Patricia C. Kellar
Janet Kelsay
Marilyn J. Kelsey
Thomas and Mary Kendrick
Christopher and Arlene Kies

Charles C. Knox
 Maryann Kopelov
 Ronald and Carolyn J. Kovener
 Mary M. Kroll
 Eric C. Lai and Grace Lok
 Yvonne Lai and Kenneth P. Mackie
 David and Suzanne Larsen
 Joan B. Lauer
 John and Julia Lawson
 Debra L. Lay-Renkens and Kenneth L. Renkens
 Katherine C. Lazerwitz
 Edoardo A. Lebano
 Diana R. Lehner
 Louis and Myrna Lemberger
 Ann W. Lemke
 Leslie and Kathleen Lenkowsky
 Lesley and Mark Levin
 Andrew and Sandra Levy
 Mitzi A. Lewison
 Carolyn R. Lickerman
 Marie E. Libal-Smith and David K. Smith
 Virginia K. Long-Cecil and Carroll B. Cecil
 Peter and Carol Lorenzen
 Pamela Williamson Lowe and David C. Lowe
 Bill and Ellie Mallory
 Mayer and Ellen Mandelbaum
 Daniel J. Marcacci
 Nancy G. Martin
 Perry J. Maull
 Howard D. Mehlinger
 Linda M. Mintener and Robert M. Jones
 G. Scott Mitchell and Rosalind Burwell
 Steve and Sandra Schultz Moberly
 Michael H. Molenda, Ph.D., and Janet C. Stavropoulos, Ph.D., J.D.
 Gerald L. and Anne Klock Moss
 Patricia and John Mulholland
 Marcia M. Nagao

Frank and Nancy Nagler
 Roxana Nagosky
 Heather and Daniel Narducci
 Ambrose Ng
 Evelyn M. Niemeyer
 David and Barbara Nordloh
 Marilyn F. Norris
 Edward and Sotli Ochsner
 Wesley and Patricia Oglesby
 Harold and Denise Ogren
 Joan C. Olcott
 Richard and Jill Olshavsky
 Dennis and Lynette Organ
 Suzann Mitten Owen
 J. Patrick and Margaret Page
 Harlan and Joanna Peithman
 Linda and David Pennebaker
 Dorothy L. Peterson
 Harriet S. Pfister
 Fred A. Place
 Lois S. Pless
 Raymond A. Polstra
 Gary and Christine Potter
 Frona and Ron Powell
 Raymond and Eileen Prose
 Earl and Dorothy Prout
 Betty Posson Rieger
 Roger and Tiiru Robison
 Jerry and Nancy Ruff
 Ruth L. Rusie
 James and Helen Sauer
 Nancy and Fredric Schroeder
 Richard C. Schutte
 Lisa M. Scrivani-Tidd and Roderick Tidd
 Richard Seales
 Herbert A. Seltz
 John and Lorna Seward
 David and Barbara Sheldon
 J. Robert Shine

Rebecca and John Shockley
 Richard and Denise Shockley
 Janet A. Shupe
 Michael A. Simkowitz
 Michael P. Slon
 Catherine A. Smith
 Eliot and Pamela Smith
 Janet S. Smith
 Marvin K. Smith
 John and Laura Snyder
 Stephen T. Sparks
 Viola J. Spencer
 Stanley and Cynthia Springer
 Hugh and Cynthia St. Leger
 David and Alice Starkey
 Malcolm and Ellen Stern
 Robert and Virginia Stockton
 Bill and Gayle Stuebe
 Paula W. Sunderman
 Yasuoki Tanaka
 Jeffrey R. Tanski
 Sandra B. Taylor
 Charlotte H. Templin
 Linda J. Tucker
 William and Jane Volz
 Sharon P. Wagner
 Judith Walcoff
 George L. Walker and Carolyn M. Lipson-Walker
 Donovan R. Walling and Samuel B. Troxal
 Charles H. Webb
 Frances and Eugene Weinberg
 Kay and Ewing Werlein
 Roger and Barbara Wesby
 G. Cleveland and Frances Wilhoit
 James and Ruth Witten
 Sara and Thomas Wood
 Virginia A. Woodward

Corporations and Foundations

Avery & Greig, LLP
 Cook Polymer Technology
 Five Star Quality Care, Inc.
 Fred A. Place Accounting LLC, PA

Georgianna E. Marks' Trust
 Indiana Charitable Trust
 Jeffrey Lim MD INC
 Joshua Bell, Inc.

OneAmerica Financial Partners, Inc.
 United Technologies Corporation

Companies Providing Matching Gifts

Eli Lilly & Company
 Fidelity Charitable Gift Fund

Planned Gifts

We are grateful to those individuals who have expressed their interest in ensuring scholarship support for tomorrow's students today by making a planned gift through a testamentary gift in their estate planning by a will or trust, charitable gift annuity, or retirement plan. We are pleased to acknowledge those individuals who have provided gift documentation.

David* and Ruth Albright
 Margaret K. Bachman
 Mark and Ann* Bear

Marvin Carmack*
 Jeanette Calkins Marchant*
 Cyndi Dewees Nelson and Dale Nelson

Jean and Charles* Peters
 Curt and Judy Simic
 Jeffrey S. Tunis

**Deceased*

Endowments and Scholarships

The IU Jacobs School of Music gratefully acknowledges those individuals, corporations, and foundations that provide support through endowments and scholarships. The generosity and goodwill of those listed below put a Jacobs School of Music education within the reach of many. To learn more about investing in our talented students, please contact Melissa Dickson, director of development, via email at dickson9@indiana.edu or by phone at 812-855-4656.

Jacobs School of Music

William Adam Trumpet Scholarship
Valerie Adams Memorial Scholarship
Jamey Aebersold Jazz Combo Fund
Jamey and Sara Aebersold Jazz Fellowship
Gary J. and Kathy Z. Anderson Scholarship in Music Excellence
Kathy Ziliak Anderson Chair in Ballet
Willi Apel Early Music Scholarship Fund
Aronoff Percussion Scholarship
Martha and Fred Arto Music Scholarship
Aungst Scholarship
Stephen A. Backer Memorial Scholarship
Dr. Wilfred C. Bain Music Alumni Association Scholarship
Wilfred C. Bain Opera Scholarship Endowment
David N. Baker Jazz Scholarship
David N. Baker Visiting Artist Series
David Baker, Jr. Jazz Scholarship
Artur Balsam Chamber Music Project
Band Centennial Fund
Anthony and Olimpia Barbera Latin American Music Scholarship
Olimpia Barbera Recording Fund for the Latin American Music Center
Earl O. Bates Memorial Scholarship
Eric D. Batterman Memorial Scholarship
Joseph Battista Memorial Fund
"Because You Want To Be Here" Scholarship
Achasa Beechler Music Scholarship Fund
William Bell Memorial Fund
Colleen Benninghoff Music Scholarship
Leonard Bernstein Scholarship
John E. Best Scholarship
Thomas Beversdorf Memorial Scholarship
The Harriett Block Operatic Scholarship
Mary R. Book Music Scholarship Fund
Ruth Boshkoff Scholarship
Fred Wilkins and Richard W. Bosse Flute Scholarship
Julia Beth Brabson Memorial Fellowship
Julia Brabson Scholarship
Brass Instrument Scholarship
W. Michael Brittenback and William Meezan Organ Scholarship
Frances A. Brockman Scholarship
A. Peter and Carol V. Brown Research Travel Fund
Kenneth V. & Audrey N. Brown Memorial Scholarship
Alonzo and Mary Louise Brummett Scholarship in Music
Sylvia Feibelman Budd and Clarence Budd Scholarship
Marjorie J. Buell Music Scholarship
Pamela Buell Music Scholarship
Vivian N. Humphreys Bundy Memorial Scholarship Fund
Peter Burkholder and Doug McKinney Musicology Fund
Pam and Jack Burks Professorship
Elizabeth Burnham Music Instrument Maintenance Fund
Dorothy Knowles Bush and Russell Jennings Bush Piano Scholarship
The Camerata Scholarship
John and June Canfield Bloomington Pops Scholarship
Joan and Marvin Carmack Scholarship
Robert L. Carpenter Fund
Charles Driven Campbell Piano Scholarship
Susan Cartland-Bode Performance Excellence Scholarship
Susan Cartland-Bode Scholarship
Walter Cassel Memorial Scholarship
Austin B. Caswell Award
Center for the History of Music Theory and Literature Endowment Fund
Alan Chepregi Memorial Scholarship
Emma H. Claus Scholarship Fund
Choral Conducting Department Enhancement Fund
Lucy and Samuel Chu Piano Scholarship
Cook Band Building Fund
Patricia Sorenson Cox Memorial Scholarship
Ray E. Cramer Graduate Scholarship
Ray Cramer Scholarship
Jean and Doris Creek Scholarship in Trumpet
Donna and Jean Creek Scholarship
Donna and Jean Creek Scholarship in Voice
Mavis McRae Crow Music Scholarship Fund
T.F. Culver and Emma A. Culver Scholarship Fund
Jeanette Davis Fund
Pete Delone Memorial Scholarship
Alfonso D'Emilia Scholarship Fund
Department of Musicology Fund
Gayl W. Doster Scholarship in Music
Rostislav Dubinsky Music Scholarship
Fred Ebbs Memorial Scholarship
David Eissler Memorial Scholarship Fund
Ruth L. Elias Scholarship Fund
Guillermo Espinosa Endowment Fund
Merle Evans Scholarship
Fairview Elementary School String Project
Fairview Elementary School String Project II
Philip Farkas Horn Scholarship
Eleanor Fell Scholarship
Rose and Irving Fell Violin Scholarship
Five Friends Master Class Series
Ford-Crawford Recital Hall Maintenance Fund
Frederick A. Fox Composition Scholarship
William and Marcia Fox Scholarship in Music
Dr. Frederick and Mary Moffatt Freeburn Teaching Fellowship
Janie Fricke Scholarship Fund for Aspiring Musicians
The Friday Musicales Scholarship
J.N. Garton Memorial Scholarship
Glenn Gass Scholarship
Bill and Mary Gasser Scholarship/Fellowship Endowment
Lynn E. Gassoway-Reichle Chair in Piano
Robert Gatewood Opera Fund
Cary M. Gerber Scholarship Fund
Marcella Schahfer Gercken Band Scholarship
Richard C. Gigax Memorial Scholarship Fund
Gignilliat Music Scholarship Fund
Ellen Cash Gignilliat Fellowship
Linda C. and Jack M. Gill Chair in Violin
Linda Challis Gill and Jack M. Gill Music Scholarship
Gladys Gingold Memorial Scholarship
Josef Gingold Violin Scholarship Fund
Charles Gorham Trumpet Scholarship
St. Luke's UMC/Goulding and Wood Organ Scholarship
Martin Eliot Grey Scholarship
Montana L. Grinstead Fund
Arthur and Ena Grist Scholarship Fund
Murray Grodner Double Bass Scholarship
Wayne Hackett Memorial Harp Scholarship Fund
Jack I. & Dora B. Hamlin Endowed Chair in Piano
Margaret H. Hamlin Scholarship
Judith Hansen-Schwab Singing Hoosiers Scholarship
Margaret Harshaw Scholarship
Russell A. Havens Music Scholarship
Bernhard Heiden Scholarship
Jascha Heifetz Scholarship

Eva Heinitz Cello Scholarship Fund
 William Gammon Henry, Jr. Scholarship
 Julius and Hanna Herford Fund for Visiting Scholars and Conductors
 in Choral Music
 Dorothy L. Herriman Scholarship Fund
 Mark H. Hindsley Award for Symphonic Band
 Mark H. Hindsley Endowed Fund for Symphonic Band
 Historical Performance Institute Fund
 Ernest Hoffzimmer Scholarship
 Leonard Hokanson Chamber Music Scholarship
 Georgia Wash Holbeck Fellowship
 Julian Hook Music Fund
 Julian Hook Music Theory Fund
 William S. and Emma S. Horn Scholarship Fund
 Harry and Ruth Houdeshel Memorial Flute Scholarship
 Bruce Hubbard Memorial Scholarship
 Dwan Hublar Music Education Scholarship
 Lawrence P. Hurst Medal in Double Bass
 IU Children's Choir Fund
 International Harp Competition
 Barbara and David Jacobs Fellowship
 Barbara and David Jacobs Scholarship
 Barbara and David Jacobs School of Music Enhancement Fund
 David H. Jacobs Chair in Music
 David Henry Jacobs International Overseas Study Scholarship
 David Henry Jacobs Music Scholarship
 Jacobs Bicentennial Scholars and Fellows in Honor of Charles H. Webb
 Jacobs Endowment in Music
 Jacobs School of Music International Overseas Study Scholarship
 Eva Janzer Memorial Fund
 Jazz Double Bass Studio Fund
 Wilma Jensen Organ Scholarship
 Ted Jones and Marcia Busch-Jones Musical Arts Center Fund
 Ted Jones Musical Arts Center Executive Director of Production Fund
 Georgina Joshi Composition Commission Award
 Georgina Joshi Fellowship
 Georgina Joshi Fund
 Georgina Joshi Handelian Performance Fund
 Georgina Joshi International Fellowship
 Georgina Joshi Recording Arts Studio Fund
 Walter and Freda Kaufmann Prize in Musicology Fund
 Mack H. Kay Scholarship for Excellence in Jazz Composition Fund
 Marilyn Keiser Organ Scholarship
 Martin Luther King, Jr. Scholarship
 Klinefelter Scholarship Fund
 Eugene J. and Eleanor J. Knapik Fund
 Lucie M. Kohlmeier Music Scholarship in Voice
 Robert Kraus Memorial Scholarship
 Peter and Monika Kroener Dean's International Fellowship in Music
 George and Elizabeth Krueger Scholarship
 Herbert O. Kuebler Music Fellowship
 Michael Kuttner Musical Education Fund
 Robert LaMarchina Music Scholarship
 Latin American Music Center Fund
 James and Kathie Lazervitz Visiting Artists Fund
 Sara and Robert LeBien Jacobs School of Music Scholarship
 Sara J. and Robert F. Lebien Scholarship
 Lewis Family Scholarship in Music
 Martha Lipton Scholarship
 Jay Lovins Memorial Scholarship Fund
 Ethel Louise Lyman Memorial Fund
 P.E. MacAllister Scholarship in Voice
 John Mack Memorial Scholarship in Oboe
 Virginia MacWatters Abree Scholarship
 Jeannette Calkins Marchant Friends of Music Scholarship
 Marching Hundred Hall Fund
 Wilda Gene Marcus Piano Scholarship
 Jay Mark Scholarship in Music
 Georgia Marriott Scholarship
 Arthur W. Mason Musical Scholarship Fund
 Perry Maull Student Travel Fund
 Mary Justine McClain Opera Theater Fund
 Susan Sukman McCray Scholarship
 Susann McDonald Fund
 Susann McDonald Harp Study Fund
 Katherine V. McFall Scholarship
 Bernardo and Johanna Mendel Graduate Scholarship for the
 School of Music
 Menke/Webb/Sturgeon, Inc. Fund
 B. Winfred Merrill Scholarship Fund
 Lou and Sybil Mervis String Quartet Fund
 Arthur R. Metz Carillonneur Fund
 Arthur R. Metz Organ Department Fund
 Otto Miessner Memorial Music Scholarship Fund
 Nathan A. and Margaret Culver Miller Memorial Scholarship Fund
 Dorothy Hoff Mitchell Scholarship
 Peter Steed Moench Scholarship
 Jack and Marilyn Moore Graduate Flute Fellowship
 Marcel Mule Scholarship Fund
 Music Dean's Dissertation Prize Endowment Fund
 Music Library Fund
 Music Theory Fund
 Nellie Woods Myers Scholarship
 Ben Nathanson Scholarship
 Nina Neal Scholarship Fund
 Robert Erland Neal Music Scholarship
 Otto Nothhacksberger Endowed Choir
 Otto Nothhacksberger Memorial Fund
 On Your Toes Fund
 Opera Illinois League Scholarship
 Bernard Opperman Memorial Fund
 Organ Department Fund
 Juan Orrego-Salas Scholarship
 Namita Pal Commemorative Award
 Jason Paras Memorial Fund
 Marie Alice and Gilbert Peart Scholarship
 James & Helen Pellerite Flute Scholarship
 Jackie Pemberton Memorial Scholarship Fund
 Doris Klausling Perry Scholarship
 Harvey Phillips Memorial Scholarship
 Harvey Phillips Tuba-Euphonium Quarter Composition Contest
 Walter and Rosalee Pierce Scholarship in Organ
 Ildebrando Pizzetti Memorial Scholarship Fund
 Cole and Kate Porter Memorial Scholarship
 George E. Powell, III Scholarship
 Pre-College Ballet Scholarship
 The Presser Foundation Scholarship and the Presser Music Award
 Project Jumpstart Fund
 Garry Lee and Nancy Gray Puckett Scholarship
 Mary and Oswald G. Ragatz Organ Scholarship
 Stanley Ransom Scholarship in Voice
 Robert C. Rayfield Memorial Scholarship
 RedStepper Fund
 RedStepper Scholarship
 Charlotte Reeves Chamber Music Endowment Fund
 Albert L. and Lynn E. Reichle Scholarship in Music
 Albert L. Reichle Chair in Trumpet
 Dorothy Rey Scholarship
 The Sally W. Rhodes Scholarship
 Gwyn and Barbara Richards Family Scholarship
 Gwyn Richards Scholarship
 Agnes Davis Richardson Memorial Scholarship Fund
 John P. Richardson Jr. Violin Scholarship
 The Naomi Ritter Scholarship
 Walter and Dorothy Robert Scholarship Fund
 Louise Roth Scholarship
 Leonard & Maxine Ryan Memorial Fund
 Rosetta Samaroetto Memorial Scholarship
 Roy and Mary Samuelsen Scholarship
 Elizabeth Schaefer Memorial Scholarship
 Richard J. Schilling Collaborative Piano Scholarship in Honor of
 Charles H. Webb
 Lee Edward Schroeder Endowed Scholarship
 Michael L. Schwartzkopf Singing Hoosiers Fund
 Gyorgy Sebok Scholarship in Piano
 Ruth Parr Septer Scholarship Fund
 Maidee H. and Jackson A. Seward Organ Fund
 Terry C. Shirk Memorial Scholarship Fund
 Shulz Memorial Fund
 Singing Hoosiers Endowment
 Singing Hoosiers Travel Fund
 Jean Sinor Memorial Lecture Series
 Jerry E. Strucek Memorial Scholarship
 Samuel and Martha Siurua Scholarship Fund

Susan Slaughter Trumpet Scholarship
 Janos Starker Cello Scholarship
 Dorothy Richard Starling Chair in Violin Studies
 Charlotte Steinwedel Scholarship
 Evelyn P. Stier Memorial Scholarship Fund
 Edward M. Stochowicz Memorial Scholarship
 Douglas and Margaret Strong Scholarship
 Harry Sukman Memorial Scholarship Fund
 Robert D. Sullivan Music Scholarship
 Elsie L. Sweeney Memorial Scholarship
 The Maxine Rinne Talbot Music Scholarship
 Donald L. Tavel Memorial Scholarship
 Elizabeth Schaefer Tenreiro Scholarship Fund
 Marcie Tichenor Scholarship
 Mary Coffman Tilton Harpsichord Fellowship
 Hans and Alice B. Tischler Endowment
 Giorgio Tozzi Scholarship
 Trombone Artistic Activity Fund
 Sarah Joan Tuccelli-Gilbert Memorial Fellowship in Voice
 Henry A. Upper Chair in Music
 Andy Upper Scholarship
 Roe Van Boskirk Memorial Scholarship in Piano Fund
 Carl G. and Mazelle Van Boskirk Memorial Scholarship Fund
 Jon Vickers Film Scoring Award
 Vocal Jazz Ensemble Fund
 William J. and Betty J. Wampler Scholarship

Dean Charles H. Webb Chair in Music
 Charles and Kenda Webb Music Excellence Fund
 Charles H. Webb Music Scholarship
 Anna Weber Endowment Fund
 Wennerstrom Music Theory Associate Instructor Fellowship
 Mary Wennerstrom Phillips and Leonard M. Phillips Endowment
 Wennerstrom-Phillips Music Library Directorship Endowment
 Wennerstrom-Phillips Piano Scholarship
 Allen R. & Nancy A. White Music Scholarship
 Lawrence R. & Vera I. White Music Scholarship
 Kenneth C. Whitener Fund for Ballet Excellence
 Fred Wilkins and Richard W. Bosse Flute Scholarship
 Camilla Williams Voice Scholarship
 Robert E. Williams Singing Hoosiers Scholarship
 Bill and Lenis Williamson Music Scholarship
 Madge Wilson Music Scholarship Fund
 Carol A. Wingler Memorial Fellowship
 Marjorie Schlamp Winters Scholarship Fund
 Janet Corday Won Memorial Scholarship
 Woodwind and the Brasswind Scholarship Fund
 Mildred F. Yoder Scholarship
 Steve Zegree Vocal Jazz Scholarship
 Avedis Zildjian Percussion Scholarship
 Asher G. Zlotnik Scholarship
 Lennart A. von Zweyberg Cello Scholarship

The Society of the Friends of Music

Friends of Music David Albright Memorial Scholarship
 Friends of Music Robert M. Barker Scholarship in honor of Patsy
 Fell-Barker
 Friends of Music Patsy Fell-Barker Scholarship in honor of my family
 Thomas J. Beddow & Joseph W. Nordloh Memorial Friends of Music
 Scholarship
 Alan P. Bell Memorial Friends of Music Scholarship
 George A. Blique, Jr. Friends of Music Scholarship
 Eleanor Jewell Byrnes Friends of Music Piano Scholarship
 Marvin Carmack Friends of Music Scholarship
 Joan and Marvin Carmack Friends of Music Scholarship
 Anita Hursh Cast Friends of Music Scholarship
 Esther Ritz Collyer Piano Scholarship
 Cristini Friends of Music Scholarship
 The Patsy Earles Friends of Music Scholarship
 Robert A. Edwards Friends of Music Scholarship
 Marianne V. Felton Friends of Music Scholarship in Voice
 Richard S. and Jeanne Hardy Forkner Friends of Music Scholarship
 Marjorie F. Gravit Friends of Music Scholarship
 Marjorie F. Gravit Piano Scholarship

The Rajih and Darlene Haddawi and Kathryn and Scott C. Schurz
 Scholarship
 The Rajih and Darlene Haddawi Scholarship
 The Alice V. Jewell and David B. Mills Friends of Music Scholarship
 The Karl and Vera O'Lessker Friends of Music Scholarship
 Mary Jane Reilly Friends of Music Scholarship
 Dagmar K. Riley Friends of Music Scholarship
 Samuel E. Ross Friends of Music Scholarship
 Dr. Richard Schilling-Ruth Tournier Friend of Music Voice Scholarship
 Scott C. and Kathryn Schurz Friends of Music Scholarship
 The Scott C. and Kathryn Schurz Latin American Friends of Music
 Scholarship
 Mr. and Mrs. Jake Shainberg and Mr. and Mrs. David Newman
 Friends of Music Scholarship
 Society of the Friends of Music Fund
 Society of the Friends of Music of Indiana University Scholarship
 Ruth E. Thompson Friends of Music Scholarship
 Kenda Webb Friends of Music Scholarship
 Ulrich Weisstein Friends of Music Scholarship in Voice
 Herman B Wells Memorial Friends of Music Scholarship

IU Opera Theater Production Staff

General Manager	Dean Gwyn Richards
Ted Jones Executive Director of Production	Timothy Stebbins
Director of Coaching and Music Administration	Kevin Murphy
Director of Opera Choruses	Walter Huff
Executive Administrator of Instrumental Ensembles	Thomas Wieligman
Coordinating Opera Coach	Kimberly Carballo
Coach Accompanists	Mark Phelps, Schuichi Umeyama Piotr Wisniewski
Production Stage Manager	Trevor Regars
Assistant Stage Managers	Megan Gray, John Hunter
Technical Director	Robert Brown
Assistant Technical Director	Christian Schmitt
Director of Paint and Props	Mark F. Smith
Properties Manager	Gwen Law
Costume Shop Supervisor	Dana Tzvetkov
Costume Shop Projects Manager	Soraya Noorzad
Wardrobe Supervisor	Jenna Kelly
Wigs and Makeup Designer	Gary Arave
Head of Lighting	Patrick Mero
House Electrician	Fritz Busch
Stage Carpenters	Ken D'Eliso, Andrew Hastings
Administrative Production Assistant	Brenda Stern
Director of Recording Arts	Konrad Strauss
Audio Technician	Fallon Stillman
Director of Marketing and Publicity	Dana Navarro
Publicity and Media Relations Specialist	Linda Cajigas
Director of Digital Design	Patrick Eddy
Music Programs Editorial Specialist	Jonathan Shull
Marketing and Publicity Assistant	Sarah Slover
Administrative Assistant	Brayton Arvin
Box Office and House Manager	Benjamin Harris
Stitchers	Jacqueline Westbrook, Sarah Travis Wendy Langdon, Noriko Zulkowski
Costume Shop Assistant	Claire Stebbins



OPERA & BALLET

THEATER 15/16 SEASON

The Barber of Seville

Rossini

SEP 18, 19, 25, 26 at 7:30pm

Così fan tutte

Mozart

FEB 5, 6, 12, 13 at 7:30pm

Fall Ballet

Balanchine, Taylor, Tharp

OCT 2, 3 at 7:30pm

Carmen

Bizet

FEB 26, 27 MAR 4, 5 at 7:30pm

Dead Man Walking

Heggie & McNally

OCT 16, 17, 23, 24 at 7:30pm

Spring Ballet

Four Faces of Balanchine

MAR 25, 26 at 7:30pm

Die Fledermaus

Strauss Jr.

NOV 13, 14, 19, 20 at 7:30pm

Oklahoma!

Rodgers & Hammerstein II

April 8, 9, 15, 16 at 7:30pm;
10 at 2pm

The Nutcracker

Tchaikovsky

DEC 3, 4, 5 at 7:30pm,
5 & 6 at 2 pm

TICKETS

Musical Arts Center Box Office
Monday-Friday, 11:30-5:30
(812) 855-7433

music.indiana.edu/operaballet



JACOBS SCHOOL OF MUSIC

INDIANA UNIVERSITY
Bloomington

