

# THE Nutcracker

*Peter Ilyich Tchaikovsky*



**BALLET**  
THEATER 17/18

## FOR YOUR INFORMATION

Do you want more information about upcoming events at the Jacobs School of Music? There are several ways to learn more about our recitals, concerts, lectures, and more!

### ***Events Online***

Visit our online events calendar at **[music.indiana.edu/events](https://music.indiana.edu/events)**: an up-to-date and comprehensive listing of Jacobs School of Music performances and other events.

### ***Events to Your Inbox***

Subscribe to our weekly *Upcoming Events* email and several other electronic communications through **[music.indiana.edu/publicity](https://music.indiana.edu/publicity)**. Stay “in the know” about the hundreds of events the Jacobs School of Music offers each year, most of which are free!

### ***In the News***

Visit our website for news releases, links to recent reviews, and articles about the Jacobs School of Music: **[music.indiana.edu/news](https://music.indiana.edu/news)**.

### ***Musical Arts Center***

The **Musical Arts Center (MAC) Box Office** is open Monday – Friday, 11:30 a.m. – 5:30 p.m. Call 812-855-7433 for information and ticket sales. Tickets are also available at the box office three hours before any ticketed performance. In addition, tickets can be ordered online at **[music.indiana.edu/boxoffice](https://music.indiana.edu/boxoffice)**.

**Entrance:** The MAC lobby opens for all events one hour before the performance. The MAC auditorium opens one half hour before each performance.

**Late Seating:** Patrons arriving late will be seated at the discretion of the management.

### ***Parking***

**Valid IU Permit Holders access to IU Garages**

**EM-P Permit:** Free access to garages at all times.

**Other permit holders:** Free access if entering after 5 p.m. any day of the week.

**Non-Permit Holders access to IU Garages**

Free Friday 6 p.m. – Monday 7 a.m.

Monday – Thursday: Maximum of \$10 after 5 p.m. (less if parked up to 90 minutes).



# JACOBS SCHOOL OF MUSIC

INDIANA UNIVERSITY

Bloomington

*Three Hundred Thirty-Fourth Program of the 2017-18 Season*

---

Indiana University Ballet Theater

presents its

59<sup>th</sup> annual production of

Peter Ilyich Tchaikovsky's

## *The Nutcracker*

Ballet in Two Acts

Scenario by Michael Vernon,  
after Marius Petipa's adaptation of the story  
"The Nutcracker and the Mouse King"  
by E. T. A. Hoffman

Michael Vernon, *Choreographer*

Carmon DeLeone, *Conductor*

C. David Higgins, *Set and Costume Designer*

Mitchell Ost, *Lighting Designer*

*The Nutcracker* was first performed at the Mariinsky Theatre  
of St. Petersburg on December 18, 1892.

---

Musical Arts Center

Thursday Evening, November Thirtieth, Seven-Thirty O'Clock

Friday Evening, December First, Seven-Thirty O'Clock

Saturday Afternoon, December Second, Two O'Clock

Saturday Evening, December Second, Seven-Thirty O'Clock

Sunday Afternoon, December Third, Two O'Clock

[music.indiana.edu](http://music.indiana.edu)

Thursday, November 30, 2017 | 7:30 p.m.

## Act I

### Prologue

*Urchins* . . . Emily Byrnes, Camille Dekydtspotter,  
Caroline Jensen, Sawyer Smith  
*Passerby* . . . Alexandra Jones  
*Maids* . . . Victoria Manning and Alexandra Willson  
*Tradesperson* . . . Natalie Hedrick

### Party Scene

*Clara* . . . Sophie Noel  
*Fritz* . . . Alaena Cimmer  
*Herr Drosselmeyer* . . . Sasha Janes  
*Frau Silberhaus* . . . Anna Peabody  
*Herr Silberhaus* . . . Sam Epstein  
*Grandmother* . . . Bryanna Mitchell  
*Grandfather* . . . Robert Mack  
*Adult Guests* . . . Grace Armstrong, Reece Conrad, Anderson Da Silva,  
Kaylee Grippando, Kyra Mutttilainen, Andrew Playford,  
Claudia Rhett, Andrew Rossi  
*Child Guests* . . . Isabella Busch, Ella Dunham, Isha Gupta Harbaugh,  
Koel Gupta Harbaugh, Marcella Miles, Aika Noguchi,  
Kate Williamson, Shuran Yang  
*Columbine Dolls* . . . Alia Federico and Ginabel Peterson-Padilla  
*Harlequin Doll* . . . Nicholas Gray

# FRONT PAGE FLO

BPP/IU Musical Collaboration

Book by Larry Kass, Sara Kass, &  
George Pinney  
Music & Lyrics by Larry Kass  
Directed by George Pinney  
Executive Producer Sara Kass  
Music Director Terry LaBolt

DECEMBER 1 - 16

SHOWS START AT 7:30 PM  
at the TED JONES PLAYHOUSE

**NEWPLAYS.ORG**

812-323-3020 | BCT BOX OFFICE



BPP

# CARDINAL STAGE

FLY WITH US THIS HOLIDAY SEASON



# PETER PAN

A MUSICAL BASED ON THE PLAY BY **SIR J.M. BARRIE**



MUSIC BY **MORRIS  
(MOOSE) CHARLAP**

ADDITIONAL MUSIC  
BY **JULE STYNE**

LYRICS BY  
**CAROLYN LEIGH**

ADDITIONAL LYRICS BY **BETTY  
COMDEN AND ADOLPH GREEN**

ORIGINALLY DIRECTED, CHOREOGRAPHED AND  
ADAPTED BY **JEROME ROBBINS**

**DECEMBER 15-30** at the **BUSKIRK-CHUMLEY THEATER**

## FIND TICKETS TODAY!

[cardinalstage.org](http://cardinalstage.org) | 812.336.9300

## Dream Scene

*Baby Mice* . . . Harper Allgood, Claudia Allison,  
Cynthia Byrnes, Berkeley Cooper, Kenji Kitano

## The Battle

*Nutcracker* . . . Liam Doherty

*Soldiers* . . . Danika Allison, Emily Byrnes, Marlee Elkins,  
Khulan Escue, Isabella Harris, Alice Hill, Amelia McAfee,  
Evelyn McAlpin, Victoria Page, Anna Julia Kozak Rogo,  
Avery Schwartzman, Eleanor Turner

*Officers* . . . David Baumann, Madeline Elkins, Tara Ganguly,  
Grace May, Aika Noguchi, Chloe Shook

*King Mouse* . . . Matthew Serrano

*Mice* . . . Ariel Lyden and Sophia Ramlo  
with Lily Bines, Alexis Eicher,  
Natalie Hedrick, Alexandra Jones

## Snow Scene

*Snow Queen* . . . Anna Grunewald

*Snow Cavalier* . . . Darren Hsu

*Snow Princess* . . . Sarah Young

*Snow Flakes* . . . Dancers of Indiana University Ballet Theater



**Enjoy  
Bloomington's  
favorite ice cream.  
Now  
served at the  
Musical Arts Center!**

*The  
Chocolate  
Moose*

**Since 1933**







INDIANA UNIVERSITY JACOBS SCHOOL OF MUSIC

# PRE-COLLEGE BALLET PROGRAM

*Educating children ages 3 to 18 in the  
art of ballet for over 25 years.*



*Making dreams come true:  
Give your child the gift of ballet.*

Accepting new students for the Spring 2018 semester!

Contact us at **812-855-6158**  
or **balletpc@indiana.edu**.

For more information, visit  
[music.indiana.edu/precollege/year-round/ballet](http://music.indiana.edu/precollege/year-round/ballet).

# Intermission

## Act II

### Land of the Sweets

- Angels* . . . Harper Allgood, Claudia Allison, Cynthia Byrnes,  
Emily Byrnes, Erica Byrnes, Berkeley Cooper,  
Marlee Elkins, Cora Hall, Lina Mei Johansen,  
London Lish, Lillian Ortiz, Victoria Page,  
Marta Scalabrini, Asyat Schulz,  
Avery Schwartzman, Sawyer Smith
- Sugar Plum Fairy* . . . Ryan McCreary
- Cavalier* . . . Mason Bassett
- Sugar Plum Attendants* . . . Grace Armstrong, Lily Bines,  
Natalie Hedrick, Alyssa Lavroff,  
Bryanna Mitchell, Rachel Schultz  
with Madeline Elkins, Grace May,  
Aika Noguchi, Sophia Ramlo

### Divertissements

- Spanish* . . . Sophia Brodin  
with Marissa Arnold, Jady Dahlberg,  
Nicole Langway, Alexandra Willson
- Arabian* . . . Anna Lisa Wilkins and Jared Kelly
- Chinese* . . . Alexis Eicher, Nicholas Gray,  
Anna Grunewald
- Trepak* . . . Sterling Manka  
with Reece Conrad, Benjamin Streetman,  
and Madeline Elkins, Grace May,  
Aika Noguchi, Sophia Ramlo
- Mirlitons* . . . Lauren Smolka  
with Julia Fleming, Rachel Gehr,  
Claudia Rhett, Caroline Tonks
- Mother Ginger* . . . Robert Mack
- Her Children* . . . Audrey Adams, Alison Bowman, Jaidyn Janes,  
Malia Pischel, Sydney Shoemaker,  
Anastasia Sugimoto, Claire Watrous, Parker Witt
- Waltz of the Flowers* . . . Anna Peabody and Sam Epstein  
with Claire Donovan, Alia Federico,  
Lauren Lane, Ginabel Peterson-Padilla,  
Gillian Worek, Sarah Young,  
and dancers of Indiana University Ballet Theater
- Grand Pas De Deux* . . . Ryan McCreary and Mason Bassett
- Finale* . . . Entire Cast



# *Ariadne* AUF *Naxos*

Richard Strauss



Feb. 2, 3, 9, 10 • 7:30PM

Musical Arts Center



JACOBS SCHOOL OF MUSIC  
**OPERA & BALLET**  
THEATER 17/18 SEASON

**812-855-7433**

[music.indiana.edu/operaballet](http://music.indiana.edu/operaballet)

Friday, December 1, 2017 | 7:30 p.m.

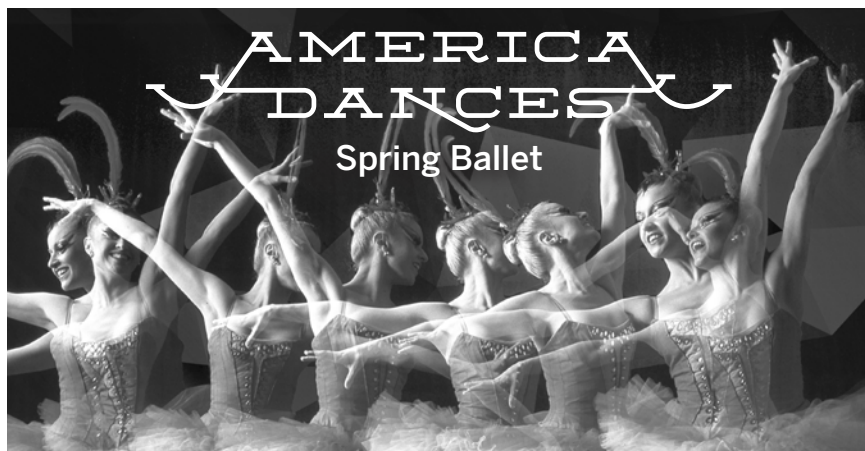
## Act I

### Prologue

*Urchins* . . . Emily Byrnes, Camille Dekydtspotter,  
Caroline Jensen, Sawyer Smith  
*Passerby* . . . Elizabeth Corsig  
*Maids* . . . Claire Donovan and Alyssa Lavroff  
*Tradesperson* . . . Natalie Hedrick

### Party Scene

*Clara* . . . Aika Noguchi  
*Fritz* . . . Elaina LaFollette  
*Herr Drosselmeyer* . . . Sasha Janes  
*Frau Silberhaus* . . . Sarah Young  
*Herr Silberhaus* . . . Sam Epstein  
*Grandmother* . . . Lily Bines  
*Grandfather* . . . Benjamin Streetman  
*Adult Guests* . . . Marissa Arnold, Haley Baker, Jady Dahlberg,  
Rachel Gehr, Julian Goodwin-Ferris, Andrew Playford,  
Andrew Rossi, Matthew Serrano  
*Child Guests* . . . Jillian Barnes, Isabella Busch, Alaena Cimmer,  
Mimi Donovan, Marcella Miles, Brianna Neary,  
Sophie Noel, Anton Rose-Nichols  
*Columbine Dolls* . . . Sophia Brodin and Alexandra Willson  
*Harlequin Doll* . . . Liam Doherty



March 23, 24 • 7:30PM

March 24 • 2PM

Musical Arts Center



JACOBS SCHOOL OF MUSIC  
**OPERA • BALLET**  
THEATER 17/18 SEASON

**812-855-7433**

[music.indiana.edu/operaballet](http://music.indiana.edu/operaballet)

# LUCIA — DI — LAMMERMOOR

Gaetano Donizetti



Feb. 23, 24, Mar. 2, 3 • 7:30PM  
Musical Arts Center



JACOBS SCHOOL OF MUSIC  
**OPERA & BALLET**  
THEATER 17/18 SEASON

**812-855-7433**  
[music.indiana.edu/operaballet](http://music.indiana.edu/operaballet)

## Dream Scene

*Baby Mice* . . . Harper Allgood, Claudia Allison,  
Cynthia Byrnes, Berkeley Cooper, Kenji Kitano

## The Battle

*Nutcracker* . . . Sterling Manka

*Soldiers* . . . Emily Byrnes, Erica Byrnes, Marlee Elkins,  
Khulan Escue, Isabella Harris, Alice Hill,  
Kenji Kitano, Audrey Moore, Lillian Ortiz,  
Victoria Page, Anna Julia Kozak Rogo, Suin Sung

*Officers* . . . Brooke Abrell, David Baumann, Ariel Lyden,  
Grace May, Sophia Ramlo, Chloe Shook

*King Mouse* . . . Reece Conrad

*Mice* . . . Madeline Elkins and Tara Ganguly  
with Alexis Eicher, Natalie Hedrick,  
Alexandra Jones, Bryanna Mitchell

## Snow Scene

*Snow Queen* . . . Claudia Rhett

*Snow Cavalier* . . . Antonio Houck

*Snow Princess* . . . Kristin Howard

*Snow Flakes* . . . Dancers of Indiana University Ballet Theater



Gregory Wang, IU Jacobs School  
of Music doctoral student.

## STAY IN THE SPOTLIGHT WITH MEADOWOOD

Meadowood is proud to be an IU Jacobs School of Music dress rehearsal site, helping musicians at IU stay in the spotlight. With engaging Lifestyle360 activities and quality care available when needed, our residents enjoy life at center stage.

**Call 812-336-7060 to join our  
residents for a performance.**

## MEADOWOOD

2455 Tamarack Trail  
Bloomington, IN 47408

**812-336-7060**

[www.MeadowoodRetirement.com](http://www.MeadowoodRetirement.com)



INDEPENDENT LIVING • OUTPATIENT REHAB  
SKILLED NURSING • SHORT STAYS

©2017 Five Star Senior Living



# Watch IU sports news on the go

with the Hoosier Sports Report app for iPhone and Android

The Hoosier Sports Report app is now available for free on iOS and Android devices—watch IU sports news anywhere!



Hoosier Sports Report features IU sports video news focusing on athletes and coaches, athletic facilities and fans. Our reporters also provide on-camera analysis, in studio and out in the field. HSR has covered more than 20 different IU sports. Additional programming includes post-game, pre-game, special topics, fan shows and more. **Watch at home, too, on your Roku, AppleTV, or AmazonFireTV.** Search “Hoosier Sports Report” on your supported streaming device or smartphone to get the app. Follow **@HooSportsRep** and **#HSRtv** on Twitter for new video news and updates.



# Intermission

## Act II

### Land of the Sweets

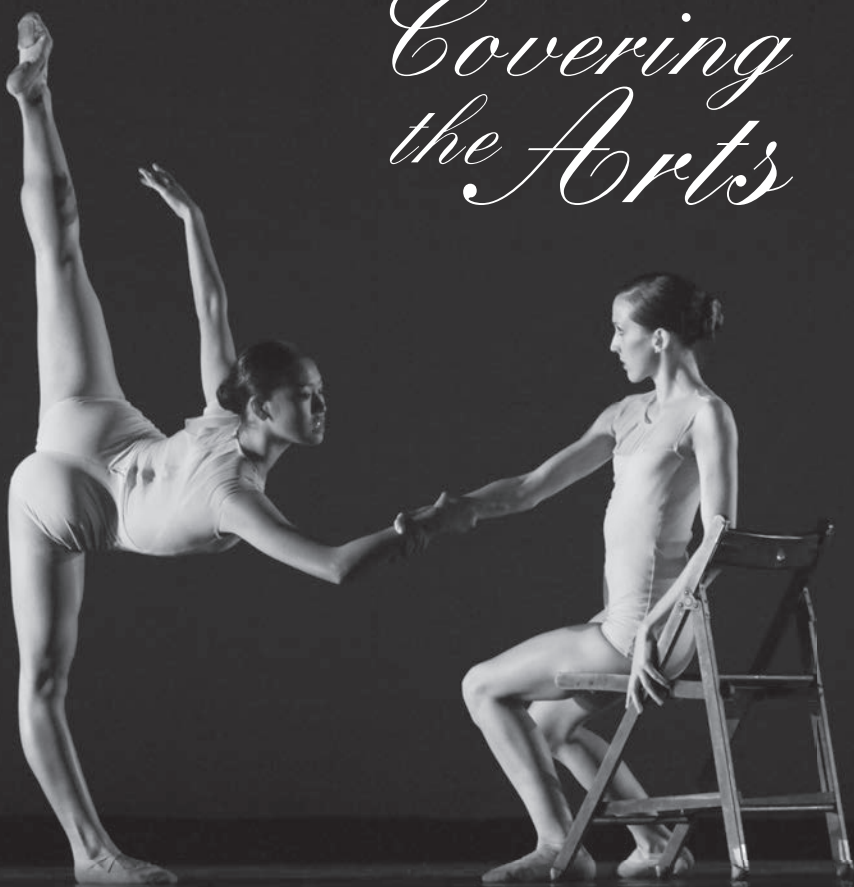
- Angels* . . . Harper Allgood, Claudia Allison, Cynthia Byrnes,  
Erica Byrnes, Naomi Clampitt, Berkeley Cooper,  
Khulan Escue, Eloise Paynter Gjerdingen,  
Cora Hall, Caroline Jensen, Lina Mei Johansen,  
Audrey Moore, Victoria Page, Marta Scalabrini,  
Asyat Schulz, Sawyer Smith
- Sugar Plum Fairy* . . . Anna Peabody
- Cavalier* . . . Mason Bassett
- Sugar Plum Attendants* . . . Alexis Eicher, Julia Fleming,  
Kaylee Grippando, Alexandra Jones,  
Alyssa Lavroff, Bryanna Mitchell  
with Madeline Elkins, Tara Ganguly,  
Ariel Lyden, Grace May

### Divertissements

- Spanish* . . . Anna Lisa Wilkins  
with Marissa Arnold, Kristin Howard,  
Nicole Langway, Caroline Tonks
- Arabian* . . . Anna Barnes and Antonio Houck
- Chinese* . . . Anderson Da Silva, Rachel Schultz,  
Cecilia Zanone
- Trepak* . . . Nicholas Gray  
with Reece Conrad, Benjamin Streetman,  
and Madeline Elkins, Tara Ganguly,  
Ariel Lyden, Grace May
- Mirlitons* . . . Lauren Smolka  
with Grace Armstrong, Haley Baker,  
Sophia Brodin, Natalie Hedrick
- Mother Ginger* . . . Robert Mack
- Her Children* . . . Audrey Adams, Alison Bowman, Caroline Carney,  
Jaidyn Janes, Holland Jones, Mira Koduri,  
Sydney Shoemaker, Claire Watrous
- Waltz of the Flowers* . . . Camille Kellems and Andrew Rossi  
with Claire Donovan, Alia Federico,  
Lauren Lane, Kyra Muttillainen,  
Ginabel Peterson-Padilla, Sarah Young,  
and dancers of Indiana University Ballet Theater
- Grand Pas De Deux* . . . Anna Peabody and Mason Bassett
- Finale* . . . Entire Cast



# *Covering the Arts*



Stay up to date on Arts and Entertainment news from IU and the Bloomington community by reading the Indiana Daily Student. The IDS is available for free at more than 350 locations on campus and around town. You can also visit [idsnews.com](http://idsnews.com) or download our mobile app.



*[idsnews.com](http://idsnews.com)*

Saturday, December 2, 2017 | 2:00 p.m.

## Act I

# Prologue

*Urchins* . . . Emily Byrnes, Camille Dekydtspotter,  
. . . Caroline Jensen, Sawyer Smith  
*Passerby* . . . Alexandra Jones  
*Maids* . . . Claire Donovan and Alyssa Lavroff  
*Tradesperson* . . . Natalie Hedrick

## Party Scene

*Clara*. . . . Sophie Noel  
*Fritz*. . . . Alaena Cimmer  
*Herr Drosselmeyer*. . . . Antonio Houck  
*Frau Silberhaus*. . . . Ryan McCreary  
*Herr Silberhaus*. . . . Mason Bassett  
*Grandmother*. . . . Bryanna Mitchell  
*Grandfather*. . . . Benjamin Streetman  
*Adult Guests*. . . . Grace Armstrong, Sam Epstein, Julian Goodwin-Ferris,  
 Kaylee Grippando, Kyra Muttilainen, Claudia Rhett,  
 Andrew Rossi, Matthew Serrano  
*Child Guests*. . . . Isabella Busch, Ella Dunham, Isha Gupta Harbaugh,  
 Koel Gupta Harbaugh, Marcella Miles, Aika Noguchi,  
 Kate Williamson, Shuran Yang  
*Columbine Dolls*. . . . Jady Dahlberg and Cecilia Zanone  
*Harlequin Doll*. . . . Reece Conrad

## Dream Scene

*Baby Mice* . . . Harper Allgood, Claudia Allison, Cynthia Byrnes,  
Berkeley Cooper, Kenji Kitano

## The Battle

*Nutcracker*. . . . Sterling Manka  
*Soldiers*. . . . Danika Allison, Emily Byrnes, Marlee Elkins,  
 Khulan Escue, Isabella Harris, Alice Hill, Amelia McAfee,  
 Evelyn McAlpin, Victoria Page, Anna Julia Kozak Rogo,  
 Avery Schwartzman, Eleanor Turner  
*Officers*. . . . David Baumann, Madeline Elkins, Tara Ganguly,  
 Grace May, Aika Noguchi, Chloe Shook  
*King Mouse*. . . . Robert Mack  
*Mice*. . . . Ariel Lyden and Sophia Ramlo  
 with Lily Bines, Alexis Eicher, Natalie Hedrick,  
 Alexandra Jones

## Snow Scene

*Snow Queen* . . . Gillian Worek  
*Snow Cavalier* . . . Anderson Da Silva  
*Snow Princess* . . . Abigail Kulwicki  
*Snow Flakes* . . . Dancers of Indiana University Ballet Theater



INTERNET • TV • VOICE • SECURITY • CELLULAR

Proud supporter of \_\_\_\_\_

**INDIANA UNIVERSITY**  
*Opera & Ballet*

— and the spectacular performance of —

*The Nutcracker  
Ballet*



**Smithville**  
THE GIGACITY COMPANY

[smithville.com](http://smithville.com)

# Intermission

## Act II

### Land of the Sweets

- Angels* . . . Harper Allgood, Claudia Allison, Cynthia Byrnes,  
Emily Byrnes, Erica Byrnes, Berkeley Cooper,  
Marlee Elkins, Cora Hall, Lina Mei Johansen,  
London Lish, Lillian Ortiz, Victoria Page,  
Marta Scalabrini, Asyat Schulz,  
Avery Schwartzman, Sawyer Smith
- Sugar Plum Fairy* . . . Rachel Schultz
- Cavalier* . . . Jared Kelly
- Sugar Plum Attendants* . . . Grace Armstrong, Marissa Arnold,  
Lily Bines, Alexandra Jones,  
Alyssa Lavroff, Bryanna Mitchell  
with Madeline Elkins, Grace May,  
Aika Noguchi, Sophia Ramlo

### Divertissements

- Spanish* . . . Mackenzie Allen  
with Anna Barnes, Claire Donovan,  
Caroline Tonks, Sarah Young
- Arabian* . . . Alexis Eicher and Darren Hsu
- Chinese* . . . Haley Baker, Julian Goodwin-Ferris,  
Abigail Kulwicki
- Trepak* . . . Liam Doherty  
with Andrew Playford, Andrew Rossi,  
and Madeline Elkins, Grace May,  
Aika Noguchi, Sophia Ramlo
- Mirlitons* . . . Kyra Muttalainen  
with Sophia Brodin, Natalie Hedrick,  
Camille Kellems, Claudia Rhett
- Mother Ginger* . . . Robert Mack
- Her Children* . . . Audrey Adams, Alison Bowman, Jaidyn Janes,  
Malia Pischel, Sydney Shoemaker,  
Anastasia Sugimoto, Claire Watrous, Parker Witt
- Waltz of the Flowers* . . . Anna Grunewald and Nicholas Gray  
with Julia Fleming, Rachel Gehr,  
Kaylee Grippando, Victoria Manning,  
Alexandra Willson, Cecilia Zanone,  
and dancers of Indiana University Ballet Theater
- Grand Pas De Deux* . . . Rachel Schultz and Jared Kelly
- Finale* . . . Entire Cast

Saturday, December 2, 2017 | 7:30 p.m.

## Act I

### Prologue

*Urchins* . . . Emily Byrnes, Camille Dekydtspotter,  
Caroline Jensen, Sawyer Smith  
*Passerby* . . . Elizabeth Corsig  
*Maids* . . . Victoria Manning and Alexandra Willson  
*Tradesperson* . . . Natalie Hedrick

### Party Scene

*Clara* . . . Aika Noguchi  
*Fritz* . . . Elaina LaFollette  
*Herr Drosselmeyer* . . . Sasha Janes  
*Frau Silberhaus* . . . Anna Peabody  
*Herr Silberhaus* . . . Sam Epstein  
*Grandmother* . . . Lily Bines  
*Grandfather* . . . Benjamin Streetman  
*Adult Guests* . . . Marissa Arnold, Haley Baker, Reece Conrad,  
Jadyn Dahlberg, Rachel Gehr, Andrew Playford,  
Andrew Rossi, Matthew Serrano  
*Child Guests* . . . Jillian Barnes, Isabella Busch, Alaena Cimmer,  
Mimi Donovan, Marcella Miles, Brianna Neary,  
Sophie Noel, Anton Rose-Nichols  
*Columbine Dolls* . . . Alia Federico and Ginabel Peterson-Padilla  
*Harlequin Doll* . . . Nicholas Gray

### Dream Scene

*Baby Mice* . . . Harper Allgood, Claudia Allison, Cynthia Byrnes,  
Berkeley Cooper, Kenji Kitano

### The Battle

*Nutcracker* . . . Anderson Da Silva  
*Soldiers* . . . Emily Byrnes, Erica Byrnes, Marlee Elkins,  
Khulan Escue, Isabella Harris, Alice Hill,  
Kenji Kitano, Audrey Moore, Lillian Ortiz,  
Victoria Page, Anna Julia Kozak Rogo, Suin Sung  
*Officers* . . . Brooke Abrell, David Baumann, Ariel Lyden,  
Grace May, Sophia Ramlo, Chloe Shook  
*King Mouse* . . . Reece Conrad  
*Mice* . . . Madeline Elkins and Tara Ganguly  
with Alexis Eicher, Natalie Hedrick,  
Alexandra Jones, Bryanna Mitchell

### Snow Scene

*Snow Queen* . . . Kyra Muttilainen  
*Snow Cavalier* . . . Mason Bassett  
*Snow Princess* . . . Lauren Smolka  
*Snow Flakes* . . . Dancers of Indiana University Ballet Theater

# Intermission

## Act II

### Land of the Sweets

- Angels* . . . Harper Allgood, Claudia Allison, Cynthia Byrnes,  
Emily Byrnes, Erica Byrnes, Berkeley Cooper,  
Marlee Elkins, Cora Hall, Lina Mei Johansen,  
London Lish, Lillian Ortiz, Victoria Page,  
Marta Scalabrini, Asyat Schulz,  
Avery Schwartzman, Sawyer Smith
- Sugar Plum Fairy* . . . Georgia Dalton
- Cavalier* . . . Julian Goodwin-Ferris
- Sugar Plum Attendants* . . . Alexis Eicher, Kaylee Grippando,  
Alexandra Jones, Alyssa Lavroff,  
Bryanna Mitchell, Rachel Schultz  
with Madeline Elkins, Tara Ganguly,  
Ariel Lyden, Grace May

### Divertissements

- Spanish* . . . Anna Lisa Wilkins  
with Marissa Arnold, Kristin Howard,  
Nicole Langway, Caroline Tonks
- Arabian* . . . Anna Barnes and Antonio Houck
- Chinese* . . . Anderson Da Silva, Abigail Kulwicki,  
Cecilia Zanone
- Trepak* . . . Sterling Manka  
with Reece Conrad, Benjamin Streetman,  
and Madeline Elkins, Tara Ganguly,  
Ariel Lyden, Grace May
- Mirlitons* . . . Camille Kellems  
with Grace Armstrong, Haley Baker,  
Sophia Brodin, Julia Fleming
- Mother Ginger* . . . Andrew Rossi
- Her Children* . . . Audrey Adams, Alison Bowman, Caroline Carney,  
Camille Dekydtspotter, Jaidyn Janes,  
Holland Jones, Mira Koduri, Claire Watrous
- Waltz of the Flowers* . . . Anna Grunewald and Nicholas Gray  
with Claire Donovan, Alia Federico,  
Lauren Lane, Kyra Muttillainen,  
Ginabel Peterson-Padilla, Sarah Young,  
and dancers of Indiana University Ballet Theater
- Grand Pas De Deux* . . . Georgia Dalton and Julian Goodwin-Ferris
- Finale* . . . Entire Cast



Sunday, December 3, 2017 | 2:00 p.m.

## Act I

### Prologue

*Urchins* . . . Emily Byrnes, Camille Dekydtspotter,  
Caroline Jensen, Sawyer Smith  
*Passerby* . . . Alexandra Jones  
*Maids* . . . Victoria Manning and Alexandra Willson  
*Tradesperson* . . . Natalie Hedrick

### Party Scene

*Clara* . . . Aika Noguchi  
*Fritz* . . . Elaina LaFollette  
*Herr Drosselmeyer* . . . Sasha Janes  
*Frau Silberhaus* . . . Sarah Young  
*Herr Silberhaus* . . . Andrew Playford  
*Grandmother* . . . Bryanna Mitchell  
*Grandfather* . . . Robert Mack  
*Adult Guests* . . . Grace Armstrong, Anderson Da Silva, Sam Epstein,  
Rachel Gehr, Julian Goodwin-Ferris, Kyra Mutttilainen,  
Claudia Rhett, Andrew Rossi  
*Child Guests* . . . Jillian Barnes, Isabella Busch, Alaena Cimmer,  
Mimi Donovan, Marcella Miles, Brianna Neary,  
Sophie Noel, Anton Rose-Nichols  
*Columbine Dolls* . . . Jady Dahlberg and Cecilia Zanone  
*Harlequin Doll* . . . Reece Conrad

### Dream Scene

*Baby Mice* . . . Harper Allgood, Claudia Allison, Cynthia Byrnes,  
Berkeley Cooper, Kenji Kitano

### The Battle

*Nutcracker* . . . Liam Doherty  
*Soldiers* . . . Emily Byrnes, Erica Byrnes, Marlee Elkins,  
Khulan Escue, Isabella Harris, Alice Hill,  
Kenji Kitano, Audrey Moore, Lillian Ortiz,  
Victoria Page, Anna Julia Kozak Rogo, Suin Sung  
*Officers* . . . Brooke Abrell, David Baumann, Ariel Lyden,  
Grace May, Sophia Ramlo, Chloe Shook  
*King Mouse* . . . Matthew Serrano  
*Mice* . . . Madeline Elkins and Tara Ganguly  
with Lily Bines, Alexis Eicher,  
Natalie Hedrick, Alexandra Jones

### Snow Scene

*Snow Queen* . . . Anna Grunewald  
*Snow Cavalier* . . . Darren Hsu  
*Snow Princess* . . . Mackenzie Allen  
*Snow Flakes* . . . Dancers of Indiana University Ballet Theater

## Intermission

### Act II

#### Land of the Sweets

- Angels* . . . Harper Allgood, Claudia Allison, Cynthia Byrnes,  
Emily Byrnes, Erica Byrnes, Berkeley Cooper,  
Marlee Elkins, Cora Hall, Lina Mei Johansen,  
London Lish, Lillian Ortiz, Victoria Page,  
Marta Scalabrini, Asyat Schulz,  
Avery Schwartzman, Sawyer Smith
- Sugar Plum Fairy* . . . Ryan McCreary
- Cavalier* . . . Mason Bassett
- Sugar Plum Attendants* . . . Grace Armstrong, Lily Bines,  
Natalie Hedrick, Alyssa Lavroff,  
Bryanna Mitchell, Rachel Schultz  
with Madeline Elkins, Tara Ganguly,  
Ariel Lyden, Grace May

#### *Divertissements*

- Spanish* . . . Sophia Brodin  
with Marissa Arnold, Jady Dahlberg,  
Nicole Langway, Alexandra Willson
- Arabian* . . . Anna Lisa Wilkins and Jared Kelly
- Chinese* . . . Alexis Eicher, Anna Grunewald,  
Nicholas Gray
- Trepak* . . . Sterling Manka  
with Anderson Da Silva, Andrew Rossi,  
and Madeline Elkins, Tara Ganguly,  
Ariel Lyden, Grace May
- Mirlitons* . . . Camille Kellems  
with Julia Fleming, Rachel Gehr,  
Claudia Rhett, Caroline Tonks
- Mother Ginger* . . . Robert Mack
- Her Children* . . . Audrey Adams, Alison Bowman, Caroline Carney,  
Camille Dekydtpotter, Jaidyn Janes,  
Holland Jones, Mira Koduri, Claire Watrous
- Waltz of the Flowers* . . . Anna Peabody and Sam Epstein  
with Claire Donovan, Alia Federico,  
Lauren Lane, Kyra Muttillainen,  
Ginabel Peterson-Padilla, Sarah Young,  
and dancers of Indiana University Ballet Theater
- Grand Pas De Deux* . . . Ryan McCreary and Mason Bassett
- Finale* . . . Entire Cast

## Snow Scene Corps de Ballet

Mackenzie Allen	Rachel Gehr	Ginabel Peterson-Padilla
Grace Armstrong	Kaylee Grippando	Claudia Rhett
Marissa Arnold	Anna Grunewald	Rachel Schultz
Haley Baker	Kristin Howard	Lauren Smolka
Anna Barnes	Camille Kellems	Caroline Tonks
Sophia Brodin	Abigail Kulwicki	Alexandra Willson
Jadyn Dahlberg	Lauren Lane	Anna Lisa Wilkins
Georgia Dalton	Victoria Manning	Gillian Worek
Claire Donovan	Ryan McCreary	Sarah Young
Alia Federico	Kyra Muttillainen	Cecilia Zanone
Julia Fleming	Anna Peabody	

## Waltz of the Flowers Corps de Ballet

Mackenzie Allen	Alexis Eicher	Alyssa Lavroff
Grace Armstrong	Julia Fleming	Lilly Leech
Marissa Arnold	Kaylee Grippando	Victoria Manning
Lily Bines	Natalie Hedrick	Bryanna Mitchell
Gianna Biondo	Alexandra Jones	Rachel Schultz
Elizabeth Corsig	Nicole Langway	Gillian Worek
Jadyn Dahlberg		

The children performing in *The Nutcracker* are from the  
Jacobs School of Music Pre-College Ballet Program.

# Synopsis

## Act I

The story is set in Vienna in the middle of the nineteenth century. Herr Silberhaus and his wife, along with their children, Clara and Fritz, celebrate the holiday festivities with friends and family. During this Christmas Eve night, the guests and their children rejoice in the magical Christmas atmosphere that Herr Drosselmeyer, Clara's godfather, brings to the Silberhaus home. He fills the festivities with magical entertainment, dancing dolls, and toys for the children. Herr Drosselmeyer has a special surprise for Clara, a Nutcracker doll. Overjoyed, Clara dances with her new Nutcracker, but her jealous brother, Fritz, breaks the Nutcracker. Herr Drosselmeyer fixes it with his magic powers, and after one final dance, all the guests leave.

That night, Clara falls into a deep sleep but is woken by giant mice that torment and threaten her. Herr Drosselmeyer protects her and helps her escape. She finds herself back in the living room where, to her amazement, the Christmas tree grows to a giant size, and she is in the midst of a huge battle between an army of tin soldiers and the mice. The Nutcracker doll comes to life and duels with the King Mouse. The Nutcracker ultimately rescues Clara from the King Mouse, whom she distracts by throwing her slipper, thus saving herself from his clutches. Herr Drosselmeyer takes Clara on the first part of a magical journey, the first stop of which is the Land of Snow, presided over by the Snow Queen and her Cavalier.

## Act II

Herr Drosselmeyer then takes Clara to the Land of Sweets, where she is met by the Sugar Plum Fairy and her court of angels. Clara recounts her story of battle with the King Mouse. As a reward, the Sugar Plum Fairy performs her famous dance for Clara and invites her to stay and watch while she is entertained by the many Divertissements who inhabit her kingdom.

## Artistic Staff



### **Michael Vernon, Choreographer, Chair Emeritus, Ballet Department**

**Faculty.** Michael Vernon started dancing at the Nesta Brooking School of Ballet in London before going on to study at the Royal Ballet School in London with such legendary teachers as Dame Ninette de Valois and Leonide Massine. He performed with the Royal Ballet, Royal Opera Ballet, and London Festival Ballet before coming to New York in 1976 to join the

Eglevsky Ballet as ballet master and resident choreographer. He became artistic director of the Long Island-based company in 1989 and remained in that position until 1996.

Vernon choreographed numerous ballets for the Eglevsky Ballet, in addition to ballets for many other professional companies in the United States and worldwide, such as BalletMet of Columbus, Ohio, and North Carolina Dance Theatre. Mikhail Baryshnikov commissioned him to choreograph the successful pas de deux *In a Country Garden* for American Ballet Theatre (ABT). His solo *S'Wonderful* was danced by ABT principal Cynthia Harvey in the presence of President and Mrs. Reagan and shown nationwide on CBS television. He served as assistant choreographer on Ken Russell's movie *Valentino*, starring Rudolph Nureyev and Leslie Caron.

Vernon taught at Steps on Broadway in New York City for many years, working with dancers from New York City Ballet, American Ballet Theatre, and many other high-profile companies. He is an integral part of the Manhattan Dance Project, which brings New York-style master classes to all regions of the United States. He has been involved with the Ballet Program of the Chautauqua Institution since 1996 and is the artistic advisor for the Ballet School of Stamford. He is permanent guest teacher at the Manhattan Youth Ballet and has a long association with Ballet Hawaii.

Vernon has been a company teacher for American Ballet Theatre, Dance Theatre of Harlem, Metropolitan Opera Ballet, and Alvin Ailey American Dance Theater. He has guest taught in companies all over the world, including West Australian Ballet, National Ballet of China, Hong Kong Ballet, Birmingham Royal Ballet, Berlin Ballet, Royal Swedish Ballet, and the Norwegian National Ballet. He has been a guest teacher for The Juilliard School and taught for many years at The Ailey School. He has served on the panel of judges for the Youth of America Grand Prix regional semifinals. For Indiana University, Vernon has choreographed *Endless Night*, *Jeux*, *Spectre de la Rose*, and *Cathedral*, and has staged and provided additional choreography for the full-length classics *Swan Lake* and *The Sleeping Beauty*. He has choreographed for many IU Opera Theater productions, such as *Faust* and the world premiere of *Vincent*. His production of *The Nutcracker* has become one of the best attended events at the Jacobs School of Music.



### **Carmon DeLeone, Conductor.**

Carmon DeLeone is music director of Cincinnati Ballet and conductor laureate of the Illinois Philharmonic Orchestra and the Middletown (Ohio) Symphony. At New York's Carnegie Hall, he has served as conductor and host of the Family Concert Series with the Orchestra of St. Luke's. He has conducted frequent performances in Europe with the Luxembourg Philharmonic Orchestra

and has been named the Illinois Music Director of the Year. Under DeLeone's leadership, the Illinois Philharmonic was twice named the Illinois Orchestra of the Year.

As a composer, he most recently premiered his *Fanfare, Funk and Fandango (An American Dance Set)*. He has composed many original scores for the ballet, most recently his *Princess & the Pea*. His best known work, a full-length ballet in two acts, *Peter Pan*, is enjoying continued praise in major cities from coast to coast as well as overseas. DeLeone conducted the debut of *Peter Pan* in London during a 28-performance run with the Atlanta Ballet at the prestigious Royal Festival Hall. His list of ballet score creations also includes *Frevo*, *Guernica*, *With Timbrel and Dance Praise His Name*, and Ruth Page's nationally televised production of *Billy Sunday*.

During his 12-year tenure as assistant, and later resident, conductor of the Cincinnati Symphony Orchestra, DeLeone served on its staff with music directors Max Rudolf, Thomas Schippers, Walter Susskind, and Erich Kunzel. He was also selected personally by Erich Leinsdorf to participate in an intensive master conducting seminar at Lincoln Center.

DeLeone's diverse talents are demonstrated by the wide range of his musical interests. He is experienced in both the classics and jazz, whether leading his own Studio Big Band from the drum set or playing French horn in both idioms.

As adjunct assistant professor of opera and music theatre at the Cincinnati College-Conservatory of Music, he conducted productions of *Prince Igor*, *La Cenerentola*, *Gianni Schicchi*, *The Crucible*, *La Calisto* (American premiere), and *The Secret Marriage*. At Indiana University, he conducted the world premiere and nationally televised production of John Eaton's children's opera, *The Lion and Androcles*.

DeLeone is very pleased to have made his New York conducting debut with the Alvin Ailey American Dance Theater for its season-opening gala performance of *Carmina Burana* and *Revelations* at New York's City Center. He made his Carnegie Hall debut with the Orchestra of St. Luke's and was immediately re-engaged to host and conduct all of the following year's series of Family Concerts.

He is a proud recipient of Cincinnati's prestigious Post-Corbett Award for excellence in the arts. He was named A Gentleman of Style and Substance by *Cincinnati Magazine*, and, most recently, was awarded the esteemed MacDowell Medal by the Cincinnati MacDowell Society.



**C. David Higgins, Set and Costume Designer.** Born in Bloomington, Indiana, and raised not two blocks from the Indiana University campus, C. David Higgins started his theatrical studies at IU intent on becoming an actor/dancer before he discovered his love for scenic design. He studied with the famous C. Mario Cristini and became proficient in the Romantic-Realist style of scenic design and painting. After earning his master's degree, he joined the staff of IU Opera Theater and worked there as master scenic artist from the time the Musical Arts Center opened in 1971 until his retirement in December 2011. He was appointed to the faculty in 1976 and served as chair of the Opera Studies Department and principal designer for Opera Theater. His design credits throughout the United States include the San Antonio Festival, Memphis Opera, Norfolk Opera, Louisville Opera, Detroit Symphony, Canton Ballet, and Sarasota Ballet as well as many other venues. His Indiana University productions have been seen throughout North America as rentals by major regional opera companies. His many international credits include the Icelandic National Theater; Ballet San Juan de Puerto Rico; Korean National Opera; Seoul City Opera; Korean National Ballet; Dorset Opera (England); Teatro la Paz de Belém, Brazil; and the Teatro Nacional de São Paulo, Brazil. He has



designed the scenery for the world première of *Our Town* (Ned Rorem), the American premières of *Jeppé* (Sandström) and *The Devils of Loudun* (Penderecki), and the collegiate premières of *Nixon in China* (Adams) and *The Ghosts of Versailles* (Corigliano) as well as many other operas and ballets. Known for his Italianate painting style, *Opera News* magazine has referred to Higgins as one of the finest American scenic artists today.



**Mitchell Ost, Lighting Designer.** Originally from Chicago, Mitchell Ost is the lighting supervisor for the Jacobs School of Music. He recently relocated to Bloomington after living in New York City, where he was a resident designer at Joe's Pub, the cabaret space at the Public Theater. In addition to his work in the New York opera, theater, and dance world, he has designed lighting and scenery on several continents. Ost is currently a resident designer for the M Ensemble Company in Miami, Florida. He also worked for several years in the lighting department at Trinity Repertory Company in Providence, Rhode Island.

## Featured Dancers



**Mackenzie Allen** is a senior in the Jacobs School of Music working toward a Bachelor of Science in Ballet Performance and is also in the Kelley School of Business, where she is studying accounting. Originally from Rockville, Maryland, she attended The Washington School of Ballet under the direction of Kee Juan Han. At Indiana University, she has performed in George Balanchine's *Swan Lake* and *Divertimento No. 15*, Jerome Robbins' *NY Export: Opus Jazz*, Sasha Janes' *Sketches from Grace*, and Michael Vernon's *The Nutcracker*. In IU Opera Theater's production of *Oklahoma!*, she appeared as Dream Laurie in the ballet dream scene. In the summer of 2017, she danced with the Washington, D.C.,-based contemporary company Errant Movement, with which she toured to perform in Chicago and Detroit.



**Anna Barnes** was born in Los Angeles, California, and started her ballet training at age three at the Westside Ballet School in Santa Monica, run by the late Yvonne Mounsey. In 2015, Barnes graduated from Colburn Dance Academy, run by Jenifer Ringer and Benjamin Millepied. Barnes is pursuing a Bachelor of Science in Ballet Performance at the Jacobs School with an Outside Field in Marketing at the Kelley School of Business. Her favorite ballets performed while attending Jacobs are Twyla Tharp's *Surfer at the River Styx*, George Balanchine's *Serenade*, and, most recently, Jerome Robbins' *N.Y. Export: Opus Jazz*.



**Mason Bassett** is a freshman at Indiana University from Bryan, Ohio. He started dancing at Bryan Community School of Dance, under the direction of Kimberly Shaffer, taking ballet, jazz, tap, and modern. He later trained with Nigel Burgoine at the Ballet Theatre of Toledo. For his senior year of high school, he attended Interlochen Arts Academy, studying with Joseph Morrissey. He has attended summer intensives at Interlochen Arts Camp (2014), Pennsylvania Ballet (2015), and The Nutmeg Ballet Conservatory (2016). At the Jacobs School, Bassett is pursuing a Bachelor of Science in

Ballet with an Outside Field in Arts Management. In IU Ballet Theater's Fall Ballet, he performed in two pieces choreographed by Sasha Janes (*You and I* and *Lascia la Spina, Cogli la Rosa*) and in Jerome Robbins' *N.Y. Export: Opus Jazz*.



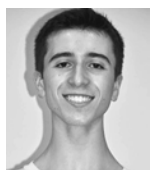
**Georgia Dalton** was born and raised in Columbus, Ohio, and began her ballet training with Columbus Youth Ballet at age three. From age five to eighteen, her ballet education included formal training with Dublin Dance Centre and Columbus City Ballet. She has attended summer intensive programs at American Ballet Theatre, Boston Ballet, Miami City Ballet, and Ballet Met. Dalton most recently performed *Flower Festival in Genzano* and *Lascia la Spina, Cogli la Rosa* with Indiana University Ballet Theater. She is a recipient of the Premier Young Artist Award and is a junior pursuing a Bachelor of Science in Ballet Performance with an Outside Field in Marketing.



A freshman at the Jacobs School of Music, **Anderson Da Silva** is pursuing a Bachelor of Science in Ballet Performance with an Outside Field in Exercise Science. He was born in Tampa, Florida, and received ballet training in Tampa at America's Ballet School under directors Paula Nuñez and Osmany Montano. He has performed leading roles in *The Nutcracker*, *Le Corsaire*, *Don Quixote*, *Coppelia*, and *Diana & Acteon*.



**Alexis Eicher** was born in Fort Wayne, Indiana. She began dancing at age four in a church dance ministry but did not begin pre-professional ballet training until the sixth grade, at the New American Youth Ballet under the instruction of Beth McLeish. Eicher has taken master classes with teachers from New York City Ballet, Boston Ballet, and Pacific Northwest Ballet. She spent seven weeks at the Chautauqua Summer Intensive, where she worked closely with Patricia McBride and performed in George Balanchine's *Rubies* with the Charlotte Ballet. Eicher has also performed repertoire choreographed by Michael Vernon, Mark Diamond, Eddy Ocampo, Jimmy Orrante, Melinda Howe, and many others. During her time at IU, she has performed in Jerome Robbins' *N.Y. Export: Opus Jazz* and Sasha Janes' *Sketches from Grace*. She is currently a freshman pursuing a Bachelor of Science in Ballet with an Outside Field in Psychology.



**Sam Epstein** is from Saratoga Springs, New York, where he trained at the National Museum of Dance. He began his formal training at the New York State Summer School of the Arts School of Ballet under the direction of Daniel Ulbricht. He has received scholarships to summer programs at Ballet Academy East, Boston Ballet School, and American Ballet Theatre. Epstein is currently a freshman pursuing a Bachelor of Science in Ballet. He is a recipient of the Premier Young Artist Award, a member of the Hutton Honors College, and a Wells Scholar. During his time at IU, he has performed the male principal role in George Balanchine's *Valse-Fantaisie*.



**Julian Goodwin-Ferris** was raised in Houston, Texas. He is pursuing a Bachelor of Science in Ballet, with an Outside Field in Music. Last year, he took a leave of absence from IU to dance with Ballet Austin for a season. While there, he traveled to China on tour for a month and performed solo roles in Stephen Mills' *The Nutcracker* and Septime Webre's *Alice (in Wonderland)*, among other ballets. He started his training at the Houston Ballet Academy, where he danced for more than 10 years. In Houston, he performed numerous roles at the academy, including an adagio variation from *The Sleeping Beauty*, a solo from the *Swan Lake* hunt scene, and parts in Stanton Welch's *Brigade* and Bournonville's *Napoli* as well as multiple small roles with the company. In 2015, Goodwin-Ferris studied at the Palucca Hochschule für Tanz in Dresden, Germany, for a month. He has attended summer programs at the Royal Danish Ballet, American Ballet Theatre, Houston Ballet, and, most recently Jacob's Pillow Dance. Between 2007 and 2009, he sang in the Children's Chorus for Houston Grand Opera's productions, and he sang a solo in *The Village of Waltz* for Hope Stone Dance Company in 2009 and 2010. He has performed roles in several Shakespeare plays, including Anthony in *Julius Caesar*, Oberon in *A Midsummer's Night Dream*, and Feste in *Twelfth Night*. He will perform the Cavalier in *The Nutcracker* with the San Luis Obispo Civic Ballet this December.



**Nicholas Gray** is a junior pursuing a Bachelor of Science in Ballet with an Outside Field in Theatre and Drama. He grew up in Milwaukee, Wisconsin, where he trained at the First Stage Theatre Academy for six years and the Milwaukee Ballet for three years. He then began training at The Nutmeg Ballet Conservatory for his junior and senior years of high school. Gray has spent summers at the Pacific Northwest Ballet and at the Chautauqua Institution, where he performed George Balanchine's *Raymonda* and Sasha Janes' *Playground Teasers*, as well as the *Coppélia Mazurka* dance with Pittsburgh Ballet Theatre. Gray's IU Ballet Theatre appearances include August Bournonville's *Flower Festival in Genzano*, Jerome Robbins' *N.Y. Export*; *Opus Jazz* and *Fanfare*, Twyla Tharp's *As Time Goes By* and *Surfer at the River Styx*, Michael Vernon's *The Nutcracker*, and Paul Taylor's *Musical Offering*. He has performed with IU Opera Theater in its productions of Rodgers and Hammerstein's *Oklahoma!* and Handel's *Rodelinda*. Last spring, Gray performed in the ensemble of IU Theatre's production of *The Drowsy Chaperone*.



**Anna Grunewald** was born in Pittsburgh, Pennsylvania. She began her training at a small performing arts school and moved on to the Ballet Academy of Pittsburgh from the fourth grade through her senior year of high school. There she danced under the instruction of Steven and Lindsay Piper and Lindy Mandradjieff. In previous summers, Grunewald has studied at the Saratoga Summer Dance Intensive, Boston Ballet, Texas Ballet Theater, Ballet West, and Chautauqua. She is currently a junior at the Jacobs School pursuing a Bachelor of Science in Ballet Performance with an Outside Field in Arts Management. During her time at Indiana University, she has performed in George Balanchine's *Concerto Barocco*, *Serenade*, and *Divertimento No.15*, as well as in *Giselle*, Bournonville's *Flower Festival in Genzano*, and Sasha Janes' *Lascia la Spina*, *Cogli la Rosa*.



**Antonio Houck** was born and raised in Boulder, Colorado, and began dancing at the age of nine at Colorado Conservatory of Dance. He has attended intensive programs at Pittsburgh Ballet Theatre, Orlando Ballet, and Hubbard Street Dance. This is his third year at the Jacobs School, where he is pursuing a Bachelor of Science in Ballet Performance with an Outside Field in Public and Environmental Policy. He has appeared in *N.Y. Export: Opus Jazz, Musical Offering, Giselle, Saudade*, and Sasha Janes' *Sketches from Grace*.



**Kristin Howard** is a senior pursuing a Bachelor of Science in Ballet Performance with an Outside Field in Business and a Minor in Business Marketing. Growing up in California, she began her ballet studies at age eight under the instruction of Stuart Carroll and Sharon Newton at Capitol Ballet Center in Sacramento. There she performed lead roles in *The Nutcracker, La Bayadere, Giselle, Swan Lake, Les Patineurs, A Midsummer Night's Dream*, and *Coppelia*. She has attended summer intensive programs at The School of American Ballet in New York and Pacific Northwest Ballet in Seattle on scholarship, as well as interning at Joffrey Ballet School in San Francisco in 2016. At Indiana University, she has performed in George Balanchine's *Swan Lake, Concerto Barocco, Elegie*, and *Divertimento No. 15*, as well as in Michael Vernon's *The Nutcracker*, featured as the Snow Queen. Howard is a recipient of the Jacobs School of Music Premier Young Artist Scholarship, the Academic Excellence Scholarship, and the Founders Scholar Award. After her graduation this December, she will be pursuing a professional career in business with a focus on the arts.



**Darren Hsu** was born and raised in Rockville, Maryland, and began his training with the Maryland Youth Ballet when he was seven years old. There he studied with Michelle Lees, Christopher Doyle, Rhodie Jorgenson, and other former professional dancers. With their encouragement, Hsu briefly trained with Pacific Northwest Ballet, American Ballet Theatre, Orlando Ballet School, and the master class series held at the Kennedy Center in Washington, D.C. He is currently a junior at the Jacobs School of Music pursuing a Bachelor of Science in Ballet Performance with an Outside Field in Informatics.



**Camille Kellems** is a junior pursuing a Bachelor of Science in Ballet Performance with an Outside Field in Arts Management. She was born and raised in Newport Beach, California, and began dancing at age three at Classical Dance Center. Her pre-professional ballet training began at Ballet Pacific, which transitioned to the Maple Conservatory under the direction of Charles Maple. She has attended summer intensives with San Francisco Ballet, Pacific Northwest Ballet, The School of American Ballet, and Boston Ballet. At IU, she has performed in *Giselle*, George Balanchine's *Serenade, Divertimento No. 15*, and *Valse-Fantasia*; Jerome Robbins' *Fanfare*; Twyla Tharp's *As Time Goes By*; and Michael Vernon's *The Nutcracker*.



**Jared Alexander Kelly** is a junior from Suitland, Maryland. He is pursuing a Bachelor of Science in Ballet Performance with an Outside Field in Marketing. While in elementary school, he participated in the Dance Theatre of Harlem's Pre-Professional Residency Program at the Kennedy Center in Washington, D.C., under the leadership of world-renowned dancer and founder Arthur Mitchell. Kelly began more intensive training at The Washington School of Ballet (TWSB) with Kee Juan Han and Katrina Toews. With TWSB, he performed at the White House for President Obama and the First Lady. After middle school, Kelly trained under the direction of Norma Pera and the dance faculty at the Baltimore School for the Arts (BSA). He performed numerous lead roles on the Lyric Opera House stage while at BSA, including *The Preacher in Appalachian Spring* by Martha Graham and *The Nutcracker Prince* in Barry Hughson's *The Nutcracker*. While attending the Baltimore School for the Arts, he became a founding member of Vision Contemporary Dance Ensemble, performing modern, African, and contemporary pieces under the artistic direction of D.C. dance legend Katherine Smith. At Indiana University, he has danced in Balanchine's *Divertimento No. 15* and *Serenade*. He has also performed principal roles in Twyla Tharp's *Surfer at the River Styx* and *As Time Goes By*. Most recently, he performed the *Flower Festival Pas de Deux* by August Bournonville, *Hallelujah* from *Sketches from Grace* by Sasha Janes, and *N.Y. Export: Opus Jazz* by Jerome Robbins.



**Abigail Kulwicki** grew up in Hudson, Ohio, and began her ballet training under the instruction of Mia Klinger in Cuyahoga Falls, Ohio. As a member of the Cuyahoga Valley Youth Ballet, she performed lead and featured roles in original ballets choreographed by Francis Patrelle, Tom Gold, Laszlo Berdo, and other well-known choreographers. At 15, she moved to Winston-Salem, North Carolina, to continue her training and complete her high school studies at the University of North Carolina School of the Arts. There Kulwicki was featured in *Polovtsian Dances*, an original piece choreographed by Dean Susan Jaffe, as well as in numerous Balanchine ballets, such as *La Source* and *Sleeping Beauty*. She has attended summer intensives at Boston Ballet, Carolina Ballet, Central Pennsylvania Youth Ballet, Gelsey Kirkland Academy, and Washington Ballet. During her time at Indiana University, she has performed in *Emeralds*, *The Nutcracker*, *Giselle*, and *Swan Lake*. She is a senior pursuing a Bachelor of Science in Ballet Performance with an Outside Field in Elementary Education.



**Sterling Manka** is a junior from Fishers, Indiana, pursuing a Bachelor of Science in Ballet Performance. He began dancing age eight at the Jordan Academy of Dance at Butler University and graduated from Indiana Ballet Conservatory, where he trained with Sergey Sergiev. Manka also trained privately under Marek Cholewa and Rosanna Ruffo, professors of dance at Butler. He placed in the top 12 in the Ensembles category at the Youth America Grand Prix finals in New York City for his performance in Sergey Sergiev's *Amélie*. Additionally, he attended the 2015 Bolshoi Ballet Academy Summer Intensive in New York City, where he won a scholarship to spend a month training at the Bolshoi Ballet Academy in Moscow, Russia, and an invitation to train at the academy year round. Recently, he choreographed the contemporary solo *Wake* for his

twin sister (and apprentice with American National Ballet), Hanna Manka, for the 2016 Varna International Ballet Competition in Varna, Bulgaria. While at IU, he has performed in George Balanchine's *Divertimento No. 15* and *The Steadfast Tin Soldier*, Twyla Tharp's *As Time Goes By*, Michael Vernon's *The Nutcracker*, Jerome Robbins' *Fanfare*, and IU Opera and Ballet Theater's collaborative production of *Oklahoma!* Manka is a member of the Hutton Honors College.



**Ryan McCreary** is a senior from Cincinnati, Ohio, pursuing a Bachelor of Science in Ballet Performance with an Outside Field in Psychology. She first fell in love with ballet during her years at Northern Cincinnati Youth Ballet under the direction of Oliver Arana, Susie Payne, Stephanie Roig, and Tricia Sundbeck. During this time, McCreary performed roles in *Don Quixote*, *Paquita*, *The Nutcracker*, and more. She placed fourth in the World Ballet Competition in 2012 and in the top 12 at Youth America Grand Prix, New York. She received the silver award at YoungArts in Miami, Florida, where she was also invited to participate in the Presidential Scholar program. She has attended summer intensives such as The School of American Ballet and Chautauqua. While at Chautauqua, she performed with Charlotte Ballet and Pittsburgh Ballet Theatre, and in a special performance alongside some of Chautauqua's finest alumni. Since coming to the Jacobs School of Music, McCreary has performed lead roles in works choreographed by Paul Taylor, George Balanchine, Michael Vernon, and Sasha Janes.



**Claudia Rhett** grew up in Nashville, Tennessee, and trained with Harding Academy School of Dance beginning at age three. During her time there, she studied several styles of dance and served as an assistant teacher for younger classes. She has attended summer intensives at The School of American Ballet, Pacific Northwest Ballet, and, most recently, Chautauqua. Currently a sophomore at the Jacobs School, Rhett is pursuing a Bachelor of Science in Ballet Performance with an Outside Field in Business and teaches in the Pre-College Ballet Program. While at IU, she has performed in Michael Vernon's *The Nutcracker*, *Giselle* as staged by Eve Lawson, Jerome Robbins' *Fanfare*, George Balanchine's *Valse-Fantaisie*, and Sasha Janes' *Sketches from Grace*.



**Kyra Muttillainen** is a sophomore from Richmond, Vermont, pursuing a Bachelor of Science in Ballet Performance. She began her training at the age of five at Vermont Ballet Theater under the direction of Alex and Kirsten Nagiba. She has attended summer intensives with the Bolshoi Ballet, Houston Ballet, Ellison Ballet, and Pittsburgh Ballet Theater. In her time with Indiana University Ballet Theater, she has performed in Jerome Robbins' *Fanfare*, George Balanchine's *Valse-Fantaisie*, *Giselle*, and Michael Vernon's *The Nutcracker*. Muttillainen is a recipient of the Premier Young Artist Award.





Prior to attending the Jacobs School of Music, **Anna Peabody** spent four years as a student at the Baltimore School for the Arts in Baltimore, Maryland, under the instruction of Norma Pera and Anton Wilson. During her time there, Peabody performed lead roles in Martha Graham's *Appalachian Spring*, George Balanchine's *Serenade*, and Barry Hughson's *The Nutcracker*, as well as in multiple other works choreographed by Christopher d'Amboise. Peabody has attended summer intensives with Boston Ballet School and Ballet Austin. Most recently, she spent her summer at the Chautauqua Institution studying under Patricia McBride and Jean-Pierre Bonnefoux, where she performed with the Charlotte Ballet and Pittsburgh Ballet Theatre. Currently in her third year at IU, she has performed in Paul Taylor's *Musical Offering*, Michael Vernon's *The Nutcracker*, Sasha Janes' *Saudade* and *Sketches from Grace*, and Jerome Robbins' *Fanfare*. She is pursuing a Bachelor of Science in Ballet Performance with an Outside Field in Elementary Education.



**Andrew Rossi** was born and raised in Pittsburgh, Pennsylvania. He began his formal dance training at age 14 with the Ballet Academy of Pittsburgh under the direction of Steven and Lindsay Piper and with the Dance Conservatory of Pittsburgh under the direction of Danielle Pavlik and Mariah McLeod. His summers were spent dancing at the Point Park University Summer Dance Intensive, the Chautauqua Institution, and Pacific Northwest Ballet. Rossi is a freshman on scholarship at the Jacobs School of Music pursuing a Bachelor of Science in Ballet Performance. While at IU, he has choreographed for the outreach initiative Occupy People's Park. Last fall, Rossi performed in IU Opera Theater's production of *Don Giovanni* and George Balanchine's *Valse-Fantasie* with IU Ballet Theater.



**Rachel Schultz** is a sophomore at the Jacobs School of Music pursuing a Bachelor of Science in Ballet Performance with an Outside Field in Arts Management. She began her ballet training at age eight in Crystal Lake, Illinois, at the Judith Svalander School of Ballet. She has studied at many different ballet schools, including Omaha Theater Ballet School under the direction of Robin Welch, Ruth Page Center for the Arts under the direction of Doloris Lipinski and Victor Alexander, and Southold Dance Theater under Erica Fischbach. In 2016, she graduated from the Indiana Ballet Conservatory under the direction of Alyona Yakovleva-Randall. She also studied privately with Allen Fields, Ellen Huston, and Tatiana Pali. Also in 2016, Schultz won second place in the senior classical division at Youth America Grand Prix in Indianapolis. This past spring, she competed in the National Society of Arts and Letters dance competition for the Bloomington chapter and was awarded a grant. During her freshman year, she danced in Michael Vernon's *The Nutcracker*, Jerome Robbins' *Fanfare*, and *Giselle*.



**Lauren Smolka** is a junior from Greensburg, Pennsylvania. She began dancing at the age of three and developed her passion for ballet at the age of thirteen, when she was admitted into the pre-professional division at Pittsburgh Ballet Theatre (PBT). She performed in Pittsburgh Ballet Theatre's production of *The Nutcracker* as a Snowflake and a Flower alongside company members. In the PBT school performances, she performed in David Lichine's *Graduation Ball* and Marius Petipa's *La Bayadere*. Smolka has also performed in works choreographed by George Balanchine, including *Snowflakes*, *Raymonda Variations*, *Concerto Barocco*, *Elegies*, *Divertimento No. 15*, and *Valse-Fantaisie*. One of her most memorable performances was dancing the role of the Oboe in Jerome Robbins' *Fanfare* with Indiana University Ballet Theater. She has attended summer intensive programs at Pittsburgh Ballet Theatre, Boston Ballet, and American Ballet Theatre, New York.



**Anna Lisa Wilkins** was born and raised in East Longmeadow, Massachusetts. She is pursuing a Bachelor of Science in Ballet Performance with an Outside Field in Italian as well as a Bachelor of Science in Finance. She hopes to dance with a professional ballet company after graduation. At the Jacobs School of Music, she has been involved with many of the opera and ballet performances, either as a dancer in the ballets or working for the costume department for the operas. Her repertoire at IU includes *Concerto Barocco*, *The Nutcracker*, *Divertimento No. 15*, *Fanfare*, *Flower Festival in Genzano*, and *NY Export: Opus Jazz*. She has been involved with the Pre-College Ballet Program, both in teaching and choreographic roles. This year, Wilkins also became involved with community outreach through the ballet department.



**Gillian Worek** is a senior pursuing a Bachelor of Science in Ballet Performance with an Outside Field in Psychology. She grew up in Florence, New Jersey, where she studied ballet under the direction of Julie Caprio at the Hamilton Ballet Theatre. Worek has performed with Indiana University Ballet Theater in Jerome Robbins' *Fanfare* and George Balanchine's *Valse-Fantaisie*, *Divertimento No. 15*, and *Swan Lake* (Act III), as well as *Giselle* (Act II) and Michael Vernon's *The Nutcracker*. This past summer, she attended the Boca Ballet Theater Advanced Summer Intensive, where she performed Balanchine's *La Source*.



**Sarah Young** was born in Bloomington, Indiana, where she began her ballet training in the Pre-College Ballet Program at the Jacobs School of Music. By the time she was in high school, she had attended summer intensives at The School of American Ballet, Pacific Northwest Ballet, and Houston Ballet. She continued her training under Peter Boal at the Professional Division Program at Pacific Northwest Ballet, where she danced alongside the professional company in numerous roles, including in George Balanchine's *Diamonds*, Alexi Ratmansky's *Don Quixote*, and Kent Stowell's *The Nutcracker*. A junior at Indiana University, Young is double-major pursuing a Bachelor of Science in Ballet Performance at Jacobs and a Bachelor of Science in Marketing at the Kelley School of Business. She remains an active participant in Kelley, Jacobs, and the Hutton Honors College.

## Women's Chorus

Tiffany Choe  
Eujean Ashley Chung  
Roisin Clark  
Vanessa Gehring  
Anna Ginther

Cadie Jordan  
Rachel Mikol  
Virginia Mims  
Kathryn Rock

Lisa Shin  
Eva Shuman  
Frances Van Vuuren  
Leeza Yorke

## University Orchestra

### *Violin I*

Elina Rubio  
Kelsea Au  
Jisun Lee  
Mone Takeda  
Justin Li  
Simona Staneva  
Isaiah Butler  
Liam Ramsey-White  
Joshelle Conley  
Yoonhee Kim  
Esther Pak  
Qianyi Fan  
Nathan Greenwood

### *Violin II*

Rebecca Edge  
Phoebe White  
Gersh Chernviskiy  
Anya Brumfield  
Peiyuan Chen  
Hannah Cleveland  
Omer Salomon  
Yuanze Li  
Mariah Murphy  
Maris Pilgrim

### *Viola*

Libby Doubrawa  
Christopher Alley  
Samantha Lee  
Mary Chang  
Larissa Mapua  
Álex Jimbo Viteri  
Alexis Raygor  
Federico Sánchez

### *Cello*

Chris Cho  
John Yang  
Joanne Choi

### *Cello (cont.)*

Krystian Chiu  
Luke Acerra  
Shuzo Hamada  
Xiyan Liu  
Maddison MacDonald

### *Bass*

Per Björkling  
Jacob Jezioro  
Bailey Bennett  
Cameron Ingram

### *Flute*

Megan Pan  
Stephanie Hegedus  
Savannah Gentry, *Piccolo*

### *Oboe*

Lisa Lutgen  
Jenna Bingham  
Nathalie Vela, *English Horn*

### *Clarinet*

Luke Folse  
Jonathan Webber  
Cameron Winrow, *Bass*

### *Bassoon*

Benjamin Bradshaw  
Jake Taniguchi

### *Horn*

Nathanael Udell  
Barbara Bright-Read  
Tessa Pettit  
Christopher Poe

### *Trumpet*

Keanu Cover  
Lizbeth Yanez

### *Trombone*

Stewart Rhodes  
Nathanial Esten  
Kolbe James, *Bass*

### *Tuba*

Miguel Menéndez-Pidal

### *Timpani*

Daniel Sahyouni

### *Percussion*

McKayla Phillips  
John Tadlock  
Laura Wilson

### *Harp*

Melanie Mashner  
Aubrey Shumway

### *Celesta*

Yohan Kwon

### *Orchestra Manager*

Austin Pancner  
Christy Oscar, *Asst.*

### *Orchestra Set-Up*

Christy Oscar  
Monica Yang  
Nathanael Udell  
Lawson Long  
Larissa Mapua  
Chialing Pidd  
Álex Jimbo-Viteri

### *Librarian*

Sara Fruehe  
Cynthia Stacy

## Student Production Staff

Chorus Master . . . . .	Han Na Jang
Stage Supervisor . . . . .	Ben Huntley
Stage Crew . . . . .	Sharon Beamer, Duncan Bowie Sam Bowser, Hannah Davis, Bryce Greene Cassie Hakken, Harper Humphrey, Michael McBride Sean Murphy, Faith Mysak, Shania Phillips Kyle Resener, Hunter Rivera, Summer Schuller Kat Tafoya, Gwen Van Denburg, Crystal Vanrell
Electrics Assistants . . . . .	Blake Christ, Betsy Wray
Electrics Crew . . . . .	Sara Dailey, Abigail Fickinger Will Lusk, Jessica Mawhorr, Evan Pruitt Erin Rieger, Sarah Schaefer, Matt Urbanek
Props Master . . . . .	Olivia Dagley
Props Assistant . . . . .	Rachael Banach
Paint Supervisor . . . . .	Amber McKoy
Paint Crew . . . . .	Steven Garza, Melissa Krueger Kayla Listenberger, Mike Schuler Macey White, Sasha Wiesenhahn
Wig Assistant . . . . .	Eileen Jennings
Wardrobe Crew . . . . .	Toni Andres, Justin Barbour, Cecily Bednarek Brad Bickhardt, Madeline Coffey, Liz Culpepper Kayla Eldridge , Kelly Hamm, Geuna Kim Anna Koźlakiewicz, Yingge Liu, Jenna Sears Catie Sneath, Eleni Taluzek Savannah Webber, Amy Wooster
Audio Production Crew . . . . .	Sean Eckerle, Jon Patrick Garcia Michele Harvey, Dominic King

# Jacobs School of Music Honor Roll

## Fiscal Year 2016-17

### Individual, Corporate, and Foundation Supporters

The Jacobs School of Music wishes to recognize those individuals, corporations, and foundations who have made contributions to the school between July 1, 2016, and June 30, 2017. Those listed here are among the Jacobs School's most dedicated and involved benefactors, and it is their outstanding generosity that enables the IU Jacobs School of Music to continue to be the finest institution of its kind in the nation.

#### ———— \$1,000,000 and Up ————

Louise Addicott-Joshi and Yatish Joshi

Robert L. Carpenter\*

David H. Jacobs

#### ———— \$100,000 - \$999,999 ————

W. W. Gasser, Jr.\*

Elwood H. Hillis

Jeffrey Haynes Hillis

Thomas Pegg and Sherry Hustad

Robert O'Hearn\*

Robert J. Waller\*

Mary H. Wennerstrom

#### ———— \$10,000 - \$99,999 ————

Gary and Kathy Z. Anderson

Carol V. Brown

J. Peter Burkholder and P. Douglas

McKinney

Charles J. Gorham

Frank C. Graves and Christine Dugan

Yona L. Grey

Wade C.\* and Ann S. Harrison

Ted W. Jones

Shalin C. Liu

James J. Pellerite

Nancy Gray Puckett

Doris Rodatz

Virginia Schmucker\*

W. Richard Shindle, Ph.D.

Curtis R. and Judy Chapline Simic

Beth Stoner and Bruce Weigand

Kim and Scott Strubeck

Robert D. Sullivan

Gregg and Judy Summerville

Charles and Lisa Surack

#### ———— \$5,000 - \$9,999 ————

S. Sue Aramian

Nicholas M. Barbaro and Sue Ellen Scheppke

Theodore W. Batterman

J. William Baus

The Boonshoft Family

Jack and Pam Boggs Burks

Susan Cartland-Bode and Henry J. Bode

Natalie Kunz Christoph\*

William and Marion Crawford

Dale Diemer

Luba Edlina-Dubinsky

Stephany A. Dunfee

Jay S. and Karen S. Goodgold

Christian F. Gourney and Melinda Roy

Rita B. Grunwald

Lenore S. Hatfield

Dr. Monika H. and Dr. Peter H. Kroener

James F. Mellichamp, D.M.

P. Michael and Patricia Miller

Regina J. Momgandas and Frederick A.

Bender

Delano L. Newkirk and Luzetta A. Newkirk

Jon and Annette Olson

Joanne E. Passet and Deborah S. Wehman

Kim and William Pressman

Thomas and Margaret Ragan

Stanley E. Ransom

Gwyn and Barbara Richards

John and Lislott Richardson

Jeannette J. Segel

Joanne L. Sprouse

Alice M. Tischler

Nancy and Allen White

Michael J. Williamson and Kathy Weston

Mimi Zweig

#### ———— \$1,000 - \$4,999 ————

W. Jameson Aebersold, D.M., and

Sara A. Aebersold

Charlene and Donald Allen

Margaret and Charles Athey

Susan H. Backer

Linda A. Baker

Charles and Gladys Bartholomew

Brett and Amy Battjer

Norma B. Beversdorf-Rezits and

Joseph M. Rezits

Mark and Tanja Bisesi

W. Michael Brittenback and

William Meezan\*

Roberta Brokaw

Craig and Crystal Bryant

Mary Louise and Schuyler Buck

Pamela S. Buell

Jean A. Burkholder

Donna L. Carroll

Bill and Anita Cast

Marcella and Scott Caulfield

Joyce E. Claffin

James and Carol Clauser

Mark and Katy Cobb

Carol and John Cornwell

Susan J. Devito

Jay and Jacqueline Dickinson

Melissa and Eric Dickson

Gary L. and Sandra G. Dowty

Jane and D. Kim Dunnick

Nile and Lois Dusdieker

Janet and Craig Edwards

Tom and Ellen Ehrlich

Daniel Feldt

Jann and Jon Fujimoto

Hollis and Robert Gaston

Paul and Ellen Gignilliat

Jack M. Gill, Ph.D. and Linda Challis Gill

Susan and Scott Gorham

Glen G. Graber

Roberta and Jim Graham

Souheil and Alejandra Haddad

Darlene and Rajih Haddawi

Elizabeth Hainen DePeters and

David A. DePeters

Bernhard C. Heiden\*

J. Stanley Hillis, M.D. and Alice G. Hillis

L. Scott and Donna J. Horrall

Nancy O. Hublar

Michele and Robert Johns

Patricia C. Jones

Louis and Lynda Jordan

Linda and Kenneth Kaczmarek

Thomas R. Kasdorf

Mary E. Klink\*

Marilyn Bone Kloss

Martin and Janie Kocman

George and Cathy Korinek

John and Nancy Korzec

Norman Krieger

Judith and Dennis Leatherman

Robert and Sara LeBien

Joon Lee

Harlan L. Lewis and Doris F. Wittenburg

Craig and Kara Lidell

P. A. Mack, Jr.

Brian D. Marcus

Lynne T. Marsh

Gary and Carol Matula

David E. McNeel  
 Geraldine and John Miller  
 Terry and Sara Miller  
 Jim and Jackie Morris  
 John T. and Barbara M. Morris  
 Lawrence Myers, Jr.  
 James Neff and Susan Jacobs-Neff  
 Carol S. Nole  
 Eugene O'Brien  
 Katheryn and Megumi Ohkubo  
 Massimo Ossi and Sarah Gaskill  
 Gary and Christine Potter  
 George and Wendy Powell  
 Al and Lynn Reichle

Stanley Ritchie  
 David and Karen Rohlfing  
 Katheryn Ruff and Stephen Lewis  
 Richard Searles  
 John and Jennifer Sejdinaj  
 Curtis and Aimee Shirley  
 John and Donna Slinkard  
 Janet S. Smith  
 Lee Ann Smith and Mark Webb  
 W. Craig Spence  
 Ellen Strommen  
 Linda Strommen  
 Mark A. Sudeith  
 Paula W. Sunderman

R. Michael Suttle and Carolyn C. Suttle  
 Karen M. Taylor  
 Randall and Deborah Tobias  
 Bruce and Madelyn Tribble  
 Brett and Diane Varner  
 Catherine and Larry Waynick  
 Charles H. Webb, Jr., D.M.  
 Theodore S. Widlanski  
 Mark Wiedenmayer  
 Tony J. Wiederhold  
 Donna Worth  
 Laura S. Youens-Wexler and  
 Richard M. Wexler  
 Susan and David Young

## — \$500 - \$999 —

Niel and Donna Armstrong  
 Kenneth and Georgina Aronoff  
 Elizabeth Baker and Richard R. Pugh  
 David Y. Bannard and Mary Ashley  
 Robert W. Bastian  
 Mark K. Bear  
 Franklin and Linda Bengtson  
 Jill and Lewis Bernstein  
 Karen and Arthur Bortolini  
 Joan C. Brand and Andre Watts  
 Jonathan P. Braude  
 Mary and Montgomery Brown  
 Aaron M. Burkhardt  
 Phillip and Elizabeth Capasso  
 Steve and Sonya Clark  
 Miriam S. Clarke  
 J. Neal Cox  
 Donald and Myra Fisher  
 Myra and Stephen Foster  
 Suzanne and Frank Gault  
 Liliana and Dan Gehring  
 Jean-Louis Haguenuer  
 Larry and Barbara Hall  
 Dena Rae Hancock and Philip Robert Caito  
 R. Victor Harnack  
 Dr. Gene and Judy Hedrick  
 Carter and Kathleen Henrich

Allan F. Hershfield and Alexandra B. Young  
 Jolaine L. Hill  
 Larry and Susan Hodapp  
 Rona Hokanson  
 William and Karol Hope  
 Robert J. Hublar  
 James S. Humphrey, Jr.  
 Robin S. Hunden  
 Linda S. Hunt and Timothy M. Morrison  
 Jeffrey S. Jepsen  
 Kenneth and Elyse Joseph  
 Michael W. Judd  
 Christopher and Kathryn Klapheke  
 Virginia A. Krauss  
 James W. and Evelyn Whaley LaFollette  
 Scott R. Latzky and Teresa S. Weber  
 Stine M. Levy  
 Jon and Susan Lewis  
 Warren E. Loomis, III  
 Beverly A. McGahey  
 Ben F. Miller  
 Patrick and Frances Mitchell  
 Ambrose Ng  
 Daniel and Misty Novak  
 Eduardo A. Ostergren and Helena Jank  
 Sujal and Elizabeth Patel  
 P. Q. Phan

Donna and Robin Poynor  
 Robert L. Ralston  
 Robert and Joy\* Renshaw  
 Jean and Donald Rhoads  
 Scott and Katherine Riley  
 Jerry and Cynthia Robinson  
 Randy W. Schekman and Nancy Walls  
 Arthur and Carole Schreiber  
 Catharine Schutzius and John Dugan  
 Michael and Marilyn Schwartzkopf  
 Belinda D. Shaw  
 David A. Sheldon  
 Nathan and Joline Short  
 Martina and Frank Silberstein  
 James B. Sinclair and Sylvia Van Sinderen  
 Michael R. St John  
 Patricia J. Stiles and Jeffery Schauss  
 Susan C. Thrasher  
 Mary and Donald Trainor  
 Richard E. Walker  
 Alan and Elizabeth Whaley  
 Carolyn A. White  
 E. G. and Sharon White  
 Jonathan L. Yaeger and Karen Abравanел  
 Jessica A. Zmierski

## — \$250 - \$499 —

Roger and Carol Allman  
 James F. Ault, Jr.  
 Tom and Kay Baker  
 Samuel and Janet Baltzer  
 Frederick and Beth Behning  
 Renee and Wilhelm Bilgram  
 John and Mary Blumenthal  
 Ruth and Christopher Borman  
 Ruth O. Boshkoff  
 Sidney C. Bosley  
 Craig M. Brown  
 Jeffery L. Burch  
 John N. Burrows  
 Doris J. Burton  
 Mark and Andrea Buselli  
 Michael A. Camp  
 Samuel and Sue Carmichael  
 Sean and Geraldine Christie  
 Jonathan D. Chu  
 Scott A. Church  
 Richard K. Cook  
 Katherine R. Covington  
 Gretchen E. Craig  
 William A. Crowle  
 Mary Lynn Denne  
 Clarence H. and Judith Doninger  
 Sharon and John Downey  
 Alan and Juliet Duncanson  
 Gary Ebbs and Martha Lhamon

Deborah and Jeffrey Ewald  
 Mark and Jennifer Famous  
 Charles L. Fugo  
 David and Linda Giedroc  
 Charlotte E. Giles  
 Halina Goldberg  
 Alan R. Goldhammer  
 Ross A. Gombiner  
 Arlene Goter  
 Mary A. Gray  
 Kenneth C. Green, II  
 Robert A. Green  
 Bertram and Susan Greenspan  
 Kathryn and Joe Gunther  
 Christine Haack and Mark Hood  
 John and Teresa Harbaugh  
 Sheila B. Hass  
 Jerald and Anne Hayes  
 Lisa A. Herbstreit  
 Lynn M. Hooker and David A. Reingold  
 Mark and Mary Huebsch  
 Diane S. Humphrey  
 Warren W. Jaworski  
 Mark and Susan Johnson  
 Russell L. Jones  
 Carol R. Kelly  
 Jillian Kinzie and Joseph Throckmorton  
 Howard and Linda Klug  
 Lee A. Kohlmeier

Judy and Larry Lafferty  
 Bruce Leavitt  
 Gregory and Veronica Leffler  
 Amy L. Letson  
 Jerry and Jane Lewis  
 Barbara and John Lombardo  
 Earl Luetzelshwab and Debi Burkhart  
 Alma Brooks Lyle  
 Bryan L. Mack  
 Lisa K. Marum  
 Matthew and Kelly Mayer  
 Dr. Lawrence and Jennifer McBride  
 Janet and George McDonald  
 Ellen L. McGlothlin  
 Steven A. McNeil  
 Daniel R. Melamed  
 Ralph and Shirley Melton  
 Kathleen and Emanuel Mickel  
 G. Scott Mitchell and Rosalind Burwell  
 Douglas M. Morgan  
 Craig C. Morris and Jeffrey C. Brown  
 Kristine and Lynwood Mueller  
 Dana R. Navarro  
 James Ognibene  
 Herbert E. Parks  
 Diane Ragains-Slawn\*  
 Heidi and Mike Ragan  
 Diana and Alan Rawizza  
 James P. Reismiller

David and Leanna Renfro  
Joann Richardson  
Timothy J. Riffle and Sarah M. McConnell  
Paul and Barbara Ristau  
David and Orli Robertson  
Bruce Ronkin and Janet Zipes  
Fran and Richard Rosman  
Anyia and Ronald Royce  
Jon and Bambi Saxe

Cecile and Kenneth Schubert  
Christopher and Janet Schwabe  
Susanne Schwibs  
Edward S. Selby  
John and Lorna Seward  
Jeffrey R. Sexton  
Kenneth and Cynthia Stella  
Konrad A. Strauss and Brenda L.  
Nelson-Strauss

Boyd and Sally Sturdevant  
Beth and Mark Taylor  
David A. Temple and Victoria Schneider  
Temple  
Dennis and April Tini  
Eric and Rina Turpen  
John and Tamyra Verhuel  
Carl Wiuff, Jr.  
Giovanni Zanollello

## — \$100 - \$249 —

Paul T. Abrinko and Monika Eckfield  
Lois C. Adams Miller  
Janet and Paul Addison  
Ann H. Adinamis Impicicche  
Harold B. Albright  
Mr. Richard L. Alden and Ms. Ann T. Alden  
Shirley T. Aliferis and Cary Passeroff  
James A. Allison  
George C. Alter and Elyce J. Rotella  
Cletus E. Amlung  
Joseph and Sharon Amlung  
Robert F. Arnoe and Toby S. Strout\*  
Mary K. Aylsworth  
James and Mary Babb  
Mary R. Babbitt  
Peggy K. Bachman  
Jana and Tyler Baldwin  
Sandra C. Balmer  
Daniel Balog  
Pamela Pfeifer Banks  
Paul and Chlois Barkman  
John and Patricia Barnes  
Edward and Julia Barnicle  
Allison and Mark Barno  
Robert R. Bartalot  
Lorie Selander Bartel and Allan R. Bartel  
Susan D. Bartlett  
Paula and John Bates  
Barbara S. Baum  
Cecelia Beam  
Sue A. Beaty  
Judy and Martin Becker  
Sharon and William Beccroft  
Suzanne K. Belbutoski  
Audrone M. Bentham  
Olesia and Andrew Bihun  
Cheryl A. Bintz  
David and Judy Blackwell  
Ronald and Regina Blais  
Gayle and Heinz Blankenburg  
Julian M. Blumenthal  
William H. Bocock  
Tricia and David Borchering  
Christopher and Deborah Botos  
Joan H. Bowden  
Cynthia and Bennet Brabson  
Marta and Scot Bradley  
Elizabeth M. Brannon  
Peter W. Brengel  
Louis and Debra Britton  
Warren J. Brodine and Mark A. Rhein  
Richard and Gail Brooks  
Joseph M. Brown  
Lawrence W. Browne  
Edward P. Bruenjes  
Margaret and Philip Brummit  
Mark and Jody Bruns  
William R. Buck  
V. Barbara Bush  
Brett H. Butler  
Rebecca and James Butler  
W. Leland and Helen M. Butler  
Margaret R. Buttermore  
Marie and James Butz  
Phyllip B. Campbell

Jose F. Caro  
Maria D. Carrasquillo and Michael Maxson  
Walter D. Carroll  
Carolyn and Barrett Carson  
Eleanor and Charles Carter  
Linda L. Case  
Susan and Robert Cave  
Harriet R. Chase  
Janice O. Childress  
Hyesik Choi  
Matthew R. Christ and Sophia C. Goodman  
Cynthia and Alfred Cirome  
Lynda F. Clendenning and Robert L. Fuller  
Richard and Laura Clifton  
Virginia B. Coats  
Kristin J. Coffey  
Timothy J. Coffman and Elizabeth M.  
Liederbach-Coffman  
Richard and Lynn Cohee  
Robert and Marcia Coleman  
James D. Collier  
Ryan B. Comerford  
Mark R. Conrad  
Todd and Darla Coolman  
Edmund Cord  
Kevin and Laura Cottrill  
Cynthia McAllister Crago and  
Don H. Crago  
Ray and Molly Cramer  
Proctor Crow, Jr.  
Cheryl and Bradley Cunningham  
J. Daniel and Mary Cunningham  
Michael G. Cunningham  
Donna and David Dalton  
Eugene B. Daniels  
Janice E. Daniels  
Gerald and Janet Danielson  
Samuel J. Davis, Jr.  
Sharon and Gary Davis  
Conrad J. Dejong  
Barbara and Richard Dell  
Jason Derrick  
Patrick and Karen Dessent  
Nadine and Holm Diercks  
Susan B. Dirgins-Friend and Doug Friend  
Barbara and Richard Domek  
Colleen M. Donohue  
Paul T. Dove  
Hannah L. Dubina  
Margaret J. Duffin  
Gregory S. Dugan  
Kevin J. Duggins  
Silsby S. Eastman  
Robert and Robin Eatman  
Patricia Eckstein  
David B. Edgeworth  
Frank and Vickie Edmondson  
Marjorie and John Egger  
Tom and Kathy Eggleston  
Christopher and Meagan Eller  
Anna A. Ellis  
Michael J. Ellis  
Mary and Herman Emmert  
Elaine and Philip Emmi  
Stanley and Pamela Engle

Kathryn J. Faith-Greene  
Lauren Feaux  
Jean E. Felix  
Arthur and Therese Fell  
Salvatore and Carol Ferrantelli  
Phyllis B. Ferrell  
Joseph P. Fiacable  
George and Jo Fielding  
Mary Ellen Fine  
Constance C. Ford  
Jean and Roger Fortna  
Bruce and Betty Fowler  
Linda A. Fraenhoff  
Agnes H. Friel  
Steven and Anne Gaylord  
Susann Gilbert  
Lorraine Glass-Harris  
Sylvia S. Gormley  
Rena and Larry Goss  
Philip C. Gough  
Robert and Sheri Gray  
Gretchen M. Green  
Lisa B. Greenfield and Frank Nothaft  
Pamela C. Griffel  
Ryan Grimes  
Teddy and Phyllis Gron  
Janet M. Gross and Walter C. Gross, Jr.  
Roberta M. Gumbel  
Chun-Fang B. Hahn  
Michelle K. Hahn  
Steve and Jo Ellen Ham  
Linda Y. Hammel  
Eleanor and David Hammer  
Charlene A. Harb  
Andrew and Mary Harper  
Melody Harrington  
Martha and Stephen Harris  
Judy Hartley  
Skaidrite and F. Michael Hatfield  
Debra and John Hatmaker  
Thomas and Kimberly Hauser  
Clayton and Ellen Heath  
W. Harvey Hegarty, Ph.D. and Connie  
Hegarty  
Marilyn and Chuck Hensley  
Daniel and Catherine Herdeman  
Stephen and Diane P. Hiatt  
Leslie W. Hicken  
J. William and Karen Hicks  
Patricia L. Hicks  
Linda G. Higginbotham and  
Bradley R. Leftwich  
Jonathan Higgins  
Suzanne L. Hillis  
Thomas and Janice Hodson  
Ruth and Lowell Hoffman  
Chris L. Holmes and David M. Burkhardt  
Ray and Phyllis Horton  
Emily L. Hostetter  
Dewey W. Howard  
Patricia and Thomas Howenstine  
Gaye Hudson  
Cindy and John Hughes  
Ivan and Anne Hughes  
Marcia A. Hughes

Sally Foreman Humphreys and  
 Llewellyn B. Humphreys  
 Masanori and Seiko Igarashi  
 Roger and Carol Isaacs  
 Stefanie H. Jacob and Scott K. Tisdell  
 Carole L. James  
 Thomas W. James  
 Charles and Laurie Jarrett  
 Glenn E. Jenne  
 Kathryn and Robert Jessup  
 Edith E. Johnson and Jason Overall  
 Kathleen L. Johnson  
 Hilda Jones  
 Kristin and Wayne Jones  
 Michael and Kimberly Kapps  
 Kathleen Katra  
 Jenice and James Keeler  
 Marilyn J. Keiser  
 Dennis D. Keithley  
 Ken and Elaine Keltner  
 Bonita S. Kern  
 Kristin and Steven Kessler  
 Melissa A. Kevorkian and Jack R. Fields  
 Kathy Kienzie  
 John and Shelley Killacky  
 Myrna M. Killey  
 Charles A. Kimbrough  
 Cynthia L. King  
 Jack and Julie King  
 Kyle W. King  
 Skye G. Kinlaw  
 Meredith K. Kirkpatrick  
 Karen L. Klages  
 Brandon and Bethany Knight  
 Joan D. Knollenberg  
 George J. Kozack  
 Peggy and Brian Kozminski  
 Joseph C. Kraus  
 Kate M. Kroll  
 Ursula M. Kuhar  
 David S. Kunstler  
 David and Judith Lahm  
 Cynthia and James Lambrecht  
 Paul and Amy Lampi  
 Aaron D. Lan  
 Thomas and Nancy Lancaster  
 Betty E. Landis  
 Beverly E. Landis and Alan R. Billingsley  
 Nicole M. Langert  
 Debra and Robert Lee  
 James A. Leick  
 Anna M. Leppert-Largent and  
 Gregory H. Largent  
 Elliot R. Lewis and Christine M. Bauer  
 Joseph J. Lewis  
 Ann and Scott Liberman  
 Marie Lindell  
 Curt A. Littlejohn  
 Lynn and Matthew Litwiller  
 Guy and Connie Loftman  
 John E. Lopatka and Marie Reilly  
 Elizabeth and Ray Lopez  
 Charles Lopinto  
 Donna and Paul Love  
 Marie T. Lutz  
 Frances M. Madachy  
 Robert W. Magnuson  
 David and Barbara Malson  
 Mayer and Ellen Mandelbaum  
 Leslie and Joseph Manfredo  
 Dr. Rochelle G. Mann  
 Rudy T. Marcozzi  
 Lynne and Richard Marks  
 John S. Marshall  
 Barbara Massie  
 Jim K. Matthews and Sallie Liesmann  
 Matthews

Gary S. May  
 William and Marcille McCandless  
 Philip and Elizabeth McClintock  
 Marie M. McCord  
 Winnifred L. McGinnis  
 Grady and Melissa McGrannahan  
 Jerry A. and Jane P. McIntosh  
 Larry S. McKee  
 James D. McLuckie  
 Mary Jo McMillan  
 Marcia and Michael McNelley  
 Sean M. McNelley  
 Ted and Bess Megremis  
 Owen and Christine Melton  
 Stephen and Judy Merren  
 Herbert C. Miller  
 Mary A. Miller  
 Thomas J. Miller  
 Jean R. Minneman  
 Linda M. Mintener and Robert M. Jones  
 Joseph T. Mitchell  
 Richard J. Mlynarski  
 Rosalind E. Mohnsen  
 Jay E. Montgomery  
 Patricia and Philip Moreau  
 T. Earline Moulder and R. David Plank  
 Sara and Allan Murphy  
 Ann E. Murray and Michael Hurtubise  
 Ray and Wendy Muston  
 Dean and Carol Myhrall  
 Loretta Nelson  
 Melvin and Beaurtie Nevel  
 Kent A. Newbury  
 David L. Newby  
 Gail C. Newmark  
 Kathleen C. Nicely  
 Jeffrey and Jane Nierman  
 Carol Kniebusch Noe  
 Gloria G. Noone  
 Margaret V. Norman  
 Martha H. Noyes  
 Joan C. Olcott  
 Melinda P. O'Neal  
 Patricia and Eric Orth  
 Mary A. Owings  
 Lee and Jim Parker  
 Mara E. Parker and Andrew J. Cogbill  
 Sandra B. Parker  
 Peggy W. Paschall  
 Marilyn J. Patton  
 James and Eleanor Pauloski  
 Ron A. Pennington  
 Travis A. Peterson  
 Wayne H. Peterson  
 Richard and Kathleen Phillips  
 Jeffrey L. Plonski  
 Karen and Gerry Porter  
 Belinda M. Potoma and Michael R. Fish  
 James H. Ports  
 Gregory L. Powell and Miriam McLeod Powell  
 Darlene and Stephen Pratt  
 Jamie and Kathy Hauser Pratt  
 Sylvanna T. Precht  
 Richard and Mary Pretat  
 Patricia and Thomas Price  
 R. Alan and Brenda Quick  
 Jonathan D. Raff and Maren Pink  
 John Rathgeb and Alan Chadrijian  
 Helen P. Reich  
 Phyllis E. Relyea  
 Carolyn J. Rice  
 Ronald and Marcia Rice  
 Donald E. Ritter  
 Samuel and Valerie Roberts  
 Roger Roe  
 Donna Fambrough Ronco and  
 Edward C. Ronco

James and Maureen Ross  
 Ryan S. Rottman and Caitlyn E. Krueer  
 Eugene and Norma Rousseau  
 Gerald J. Rudman  
 Marjorie J. Rust  
 Juliet Sablosky  
 Michael W. Sanders  
 Stephanie Sant'Ambrogio and Gary  
 Albright  
 V. Gayle Sarber  
 John and Donna Sasse  
 Harry and Patricia Sax  
 Andrew R. Schemm and Andrew G. Myers  
 Daniel E. Schulz  
 Fritz and Anne Schumann  
 Beverly C. Scott and Sylvia Patterson-Scott  
 John and Anna Scott  
 Perry and Lisa Scott  
 Mary E. Scroggs  
 Laurie and William Sears  
 John A. Seest  
 Mark and Gerri Shaffer  
 Nancy and Stephen Shane  
 Nadine E. Shank  
 Merry and John Shapiro  
 Mark Sheldon  
 Richard and Karen Shepherd  
 Larry and Debra Sherer  
 Richard and Denise Shockley  
 Thomas and Donna Shriner  
 Cecily Shull and Robert Wilson  
 W. Robert and Jill Siddall  
 Samuel and Theresa Sievers  
 Edwin L. Simpson  
 Kevin M. Sipe  
 Beverly and Stuart Skelley  
 George Smedley  
 Angelica and Fred Smith  
 John and Juel Smith  
 Kenneth Smith  
 Linda K. Smith  
 Melissa and Joshua Smith  
 Ricky G. Smith  
 Robert L. Smith and Janice L. Lesniak  
 Estus Smith  
 Steve and Mary T. Snider  
 John L. Snyder, Jr.  
 Sandra and Gary Snyder  
 Nancy L. Sonntag  
 James and Carolyn Sowinski  
 Paul V. Spade  
 Sharilyn and John Spicknall  
 Don M. Squires  
 Darell and Susan Stachelski  
 Chip Stapleton  
 Paul B. Stephenson and Maria K. Schmidt  
 Scott A. Stewart and Jeffrey D. Clanton  
 Tom and Melinda Straley  
 Beverly O. Stratman  
 James L. Strause  
 Jessica R. Suchy-Pilalis and Labros E. Pilalis  
 Cynthia and Walter Szymanski  
 Elizabeth Szymanski  
 Leaetta and Rick Taflinger  
 Nancy A. Tardy  
 Kathleen Taylor  
 Artemisia and Theodore Thevaos  
 Shelley M. Thomason  
 Jonathan N. Towne and Rebecca J. Noreen  
 Catherine L. Treen  
 Alice and Philip Trimble  
 Tamara B. Trittschuh  
 Alice and John Tweedle  
 Beth and Kyle Twenty  
 Mary E. Ulrey  
 Robert and Anna Urlick  
 Dianne Vars



Matthew and Therese Veldman  
 Sue Loeppert Visscher and Daniel W. Visscher  
 Elaine and Larry Wagner  
 Sharon P. Wagner  
 Cherilee and James Walker  
 George L. Walker and Carolyn M.  
 Lipson-Walker  
 Ruth H. Walker  
 Susan L. Walker  
 Cynthia and Jay Wallin  
 Ruby Wampler  
 John M. Ware  
 Renee Watts  
 Mary and Paul Waytenick  
 Rebecca and Wayne Weaver

Fran and Gene Weinberg  
 W. Michael and Sue Wells  
 Thomas Wendler  
 Phyllis C. Wertime  
 Constance E. West  
 Wendy and Matthias Westphal  
 Cyndi and Craig Weyers  
 Mark and Jan Wheeler  
 Anthony and Teresa White  
 Lloyd and Barbara White  
 David E. Wick  
 Thelma J. Wilcox  
 Ross B. Wilkerson  
 Dolores Wilson  
 Lawrence A. Wilson

Donna and Richard Wolf  
 Teresa and Peter Wolf  
 Michele and Gary Wolff  
 Blue B. Woman  
 Sarah and Chad Wood  
 Earl S. Woodworth  
 Karen and Danny Wright  
 G. Eugene Yates  
 Jamie and Rick Yemm  
 Jeffery P. Zaring  
 Joan and David Zaub  
 Joyce and Larry Zimmerman  
 Conrad and Debora Zimmermann

*\*deceased*

## Corporations and Foundations

### ———— \$100,000 and Up ————

Georgina Joshi Foundation, Inc.

Korea Foundation

### ———— \$25,000 - \$99,999 ————

Allen Whitehill Clowes Charitable  
 Foundation, Inc.  
 Barbro Osher Pro Suecia Foundation

Old National Wealth Management  
 Schwab Charitable Fund

Summer Star Foundation for Nature, Art and  
 Humanity, Inc.

### ———— \$10,000 - \$24,999 ————

C. Richard and Verna Louise Johnson  
 Foundation, Inc.  
 Central Indiana Community Foundation

Fidelity Charitable Gift Fund  
 Harry Kraus Survivor Trust

Sweetwater Sound, Inc.  
 University of Melbourne

### ———— \$1,000 - \$9,999 ————

Avedis Zildjian Company  
 Bank of America Corp. Foundation  
 Bloomington Community Band, Inc.  
 Bloomington Surgical Associates  
 Blue Whale Jazz Club  
 Camerata, Inc.  
 Caterpillar Foundation  
 Chevron Phillips Chemical Company LLC  
 Community Foundation of Greater Fort  
 Wayne, Inc.  
 Early Music America

German American Bank  
 Greater Kansas City Community Foundation  
 The Harvey Phillips Foundation, Inc.  
 Indiana University Alumni Association  
 Indiana University Librarians Association  
 The International Center  
 Kalamazoo Community Foundation  
 Katherine C. Lazerwitz Irrevocable Children's  
 Trust  
 Law Office of Curtis E Shirley  
 Marvin Music Co, Inc.

National Christian Foundation  
 Network for Good  
 OneAmerica Financial Partners, Inc.  
 Opera Illinois League  
 Paulsen Family Foundation  
 Robert Carwithen Music Foundation  
 Shilling Sales, Inc.  
 Smithville Charitable Foundation, Inc.  
 Theodore W. Batterman Family  
 Foundation, Inc.  
 Vanguard Charitable Endowment Program

## Annual Giving Circles

The Indiana University Jacobs School of Music Annual Giving Circles include individuals dedicated to making a difference in the cultural life of the university. These unrestricted gifts of opportunity capital support the areas of greatest need, including financial aid, faculty research, academic opportunities, and visiting artists.

### *Dean's Circle*

#### Visionary Members

### ———— \$10,000 and Up ————

Gary and Kathy Z. Anderson

David H. Jacobs

Charles and Lisa Surack

#### Strategic Members

### ———— \$5,000 - \$9,999 ————

Nicholas M. Barbaro and Sue Ellen Scheppeke  
 Jack and Pam Boggs Burks  
 William and Marion Crawford  
 Stephany A. Dunfee

Jay S. and Karen S. Goodgold  
 Frank C. Graves and Christine Dugan  
 Dr. Monika H. and Dr. Peter H. Kroener  
 P. Michael and Patricia Miller

Delano L. Newkirk and Luzetta A. Newkirk  
 Joanne E. Passet and Deborah S. Wehman  
 Jeannette J. Segel  
 Joanne L. Sprouse

## Contributing Members

### \$1,000 - \$4,999

Margaret and Charles Athey  
Linda A. Baker  
Charles and Gladys Bartholomew  
William M. Brittenback and William Meezan\*  
Craig and Crystal Bryant  
Bill and Anita Cast  
James and Carol Clauser  
Mark and Katy Cobb  
Carol and John Cornwell  
Melissa and Eric Dickson  
Jane and D. Kim Dunnick  
Tom and Ellen Ehrlich  
Paul and Ellen Gignilliat  
Jack M. Gill, Ph.D. and Linda Challis Gill  
Roberta and Jim Graham  
Darlene and Rajih Haddawi  
J. Stanley Hillis, M.D. and Alice G. Hillis

Louis and Lynda Jordan  
Linda and Kenneth Kaczmarek  
Thomas R. Kasdorf  
Mary E. Klink\*  
Marilyn Bone Kloss  
George and Cathy Korinek  
John and Nancy Korzec  
Robert and Sara LeBien  
Craig and Kara Lidell  
P. A. Mack, Jr.  
Brian D. Marcus  
David E. McNeel  
Gerry and John Miller  
Terry and Sara Miller  
Jim and Jackie Morris  
John T. and Barbara M. Morris  
Lawrence Myers, Jr.

James Neff and Susan Jacobs-Neff  
Carol S. Nole  
Eugene O'Brien  
Gary and Christine Potter  
Al and Lynn Reichle  
Richard Searles  
John and Jennifer Sejdinaj  
Curtis R. and Judy Chapline Simic  
Lee Ann Smith and Mark Webb  
W. Craig Spence  
Mark A. Sudeith  
Paula W. Sunderman  
Randall and Deborah Tobias  
Bruce and Madelyn Tribble  
Charles H. Webb, Jr., D.M.  
Mark Wiedenmayer  
Mike Williamsom and Kathy Weston

## Artist's Circle

### \$500 - \$999

Niel and Donna Armstrong  
Elizabeth Baker and Richard R. Pugh  
David Y. Bannard and Mary Ashley  
Robert W. Bastian  
Mark K. Bear  
Franklin and Linda Bengtson  
Karen and Arthur Bortolini  
Mary and Montgomery Brown  
Miriam S. Clarke  
Myra and Stephen Foster  
Liliana and Dan Gehring  
Carter and Kathleen Henrich

Jolaine L. Hill  
James S. Humphrey, Jr., Ph.D.  
Robin S. Hunden  
Jeffrey S. Jepsen  
Virginia A. Krauss  
James W. and Evelyn Whaley LaFollette  
Scott R. Latzky and Teresa S. Weber  
Stine M. Levy  
Jon and Susan Lewis  
Patrick and Frances Mitchell  
Daniel and Misty Novak  
Donna and Robin Poynor

Jean and Donald Rhoads  
Scott and Katherine Riley  
Jerry and Cynthia Robinson  
Randy Schekman and Nancy Walls  
Arthur and Carole Schreiber  
Catharine Schutzzius and John Dugan  
David A. Sheldon  
Nathan and Joline Short  
James Sinclair and Sylvia Van Sinderen  
Patricia Stiles and Jeffery Schauss  
Richard E. Walker  
E. G. and Sharon White

### \$250 - \$499

Samuel and Janet Baltzer  
Renee and Wilhelm Bilgram  
Ruth and Christopher Borman  
Doris J. Burton  
Katherine R. Covington  
William A. Crowle  
Mary Lynn Denne  
Clarence H. and Judith Doninger  
Sharon and John Downey  
Alan and Juliet Duncanson  
Mark and Jennifer Famous  
Charles L. Fugo  
Charlotte E. Giles  
Ross A. Gombiner  
Arlene Goter  
Bertram and Susan Greenspan  
Sheila B. Hass

William and Karol Hope  
Diane S. Humphrey  
Russell L. Jones  
Carol R. Kelly  
Jillian Kinzie and Joseph Throckmorton  
Howard and Linda Klug  
Lee A. Kohlmeier  
Gregory and Veronica Leffler  
Amy L. Letson  
Barbara and John Lombardo  
Earl Luetzelschwab and Debi Burkhardt  
Lisa K. Marum  
Kathleen and Emanuel Mickel  
Kristine and Lynwood Mueller  
Dana R. Navarro  
James Ognibene  
Herbert E. Parks

Diane Ragains-Slawin\*  
James P. Reismiller  
David and Leanna Renfro  
Paul and Barbara Ristau  
Bruce Ronkin and Janet Zipes  
Christopher and Janet Schwabe  
Edward S. Selby  
Jeffrey R. Sexton  
Boyd and Sally Sturdevant  
Beth and Mark Taylor  
David A. Temple and Victoria Schneider  
Temple  
John and Tamyra Verheul  
Alan and Elizabeth Whaley  
Carl Wiuff, Jr.

### \$100 - \$249

Paul Abrinko and Monika Eckfeld  
Lois C. Adams Miller  
Shirley T. Aliferis  
Joseph and Sharon Amlung  
Mary K. Aylsworth  
James and Mary Babb  
Peggy K. Bachman  
Pamela Pfeifer Banks  
John and Patricia Barnes  
Robert R. Bartalot  
Cecelia Beam  
Sue A. Beaty  
Judy and Martin Becker  
Sharon and William Becroft

Suzanne K. Belbutoski  
Audrone M. Bentham  
Olesia and Andrew Bihun  
Cheryl A. Bintz  
Ronald and Regina Blais  
Gayle and Heinz Blankenburg  
Joan H. Bowden  
Elizabeth M. Brannon  
Peter W. Brengel  
Lawrence W. Browne  
William R. Buck  
John N. Burrows  
V. Barbara Bush  
Rebecca and James Butler

Susan and Robert Cave  
Harriet R. Chase  
Janice O. Childress  
Hyesik Choi  
Scott A. Church  
Cynthia and Alfred Cirome  
Virginia B. Coats  
Richard and Lynn Cohee  
Robert and Marcia Coleman  
Mark R. Conrad  
Richard K. Cook  
Cynthia McAllister Crago and  
Don H. Crago  
Michael G. Cunningham

Eugene B. Daniels  
 Gerald and Janet Danielson  
 Conrad J. Dejong  
 Barbara and Richard Dell  
 Jason Derrick  
 Patrick and Karen Dessent  
 Susan J. Devito  
 Barbara and Richard Domek  
 Paul T. Dove  
 Hannah L. Dubina  
 Margaret J. Duffin  
 Silsby S. Eastman  
 Robert and Robin Eatman  
 Patricia Eckstein  
 Frank and Vickie Edmondson  
 Anna A. Ellis  
 Michael J. Ellis  
 Mary and Herman Emmert  
 Stanley and Pamela Engle  
 Deborah and Jeff Ewald  
 Kathryn J. Faith-Greene  
 Donna Fambrough Ronco and  
 Edward C. Ronco  
 Lauren Feaux  
 Salvatore and Carol Ferrantelli  
 Joseph P. Fiacable  
 Mary Ellen Fine  
 Constance C. Ford  
 Bruce and Betty Fowler  
 Steven and Anne Gaylord  
 Sylvia S. Gormley  
 Rena and Larry Goss  
 Robert and Sheri Gray  
 Lisa Greenfield and Frank Nothaft  
 Pamela C. Griffl  
 Teddy and Phyllis Gron  
 Roberta M. Gumbel  
 Chun-Fang B. Hahn  
 Linda Y. Hammel  
 Eleanor and David Hammer  
 Charlene A. Harb  
 Andrew and Mary Harper  
 Martha and Stephen Harris  
 Debra and John Hatmaker  
 Clayton and Ellen Heath  
 W. Harvey Hegarty, Ph.D., and Connie  
 Hegarty  
 Marilyn and Chuck Hensley  
 Daniel and Catherine Herdeman  
 Suzanne L. Hillis  
 Ruth and Lowell Hoffman  
 Emily L. Hostetter  
 Gaye Hudson  
 Ivan and Anne Hughes  
 Masanori and Seiko Igarashi  
 Stefanie H. Jacob and Scott K. Tisdell

Carole L. James  
 Kathryn and Robert Jessup  
 Edith Johnson and Jason Overall  
 Kathleen L. Johnson  
 Myrna M. Killey  
 Joan D. Knollenberg  
 Peggy and Brian Kozminski  
 Joseph C. Kraus  
 Ursula M. Kuhar  
 David S. Kunstler  
 Thomas and Nancy Lancaster  
 Debra and Robert Lee  
 James A. Leick  
 Joseph J. Lewis  
 John Lopatka and Marie Reilly  
 Charles Lopinto  
 Donna and Paul Love  
 Marie T. Lutz  
 Frances M. Madachy  
 David and Barbara Malson  
 Dr. Rochelle G. Mann  
 Rudy T. Marcozzi  
 Lynne and Richard Marks  
 Jim K. Matthews and Sallie Liesmann  
 Matthews  
 Gary S. May  
 William and Marcille McCandless  
 Philip and Elizabeth McClintock  
 Ellen L. McGlothlin  
 James D. McLuckie  
 Mary Jo McMillan  
 Stephen and Judy Merren  
 Mary A. Miller  
 Jean R. Minneman  
 Linda Mintener and Robert Jones  
 Joseph T. Mitchell  
 Rosalind E. Mohnsen  
 Jay E. Montgomery  
 Patricia and Philip Moreau  
 Ann Murray and Michael Hurtubise  
 Kent A. Newbury  
 David L. Newby  
 Kathleen C. Nicely  
 Gloria G. Noone  
 Margaret V. Norman  
 Martha H. Noyes  
 Mary A. Owings  
 Mara Parker and Andrew Cogbill  
 Peggy W. Paschall  
 Jeffrey L. Plonski  
 Gregory Powell and Miriam McLeod Powell  
 Sylvanna T. Precht  
 Patricia and Thomas Price  
 R. Alan and Brenda Quick  
 Diana and Alan Rawizza  
 Helen P. Reich

Phyllis E. Relyea  
 Carolyn J. Rice  
 Donald E. Ritter  
 Roger Roe  
 Michael W. Sanders  
 Stephanie Sant'Ambrogio and Gary Albright  
 V. Gayle Sarber  
 Fritz and Anne Schumann  
 Beverly Scott and Sylvia Patterson-Scott  
 Perry and Lisa Scott  
 Laurie and William Sears  
 John and Lorna Seward  
 Nancy and Steve Shane  
 Merry and John Shapiro  
 Richard and Karen Shepherd  
 Thomas and Donna Shriner  
 Cecily Shull and Robert Wilson  
 W. Robert and Jill Siddall  
 Edwin L. Simpson  
 Estus Smith  
 John and Juel Smith  
 Linda K. Smith  
 Kenneth Smith  
 Robert L. Smith and Janice L. Lesniak  
 Steve and Mary T. Snider  
 John L. Snyder, Jr.  
 Darell and Susan Stachelski  
 Paul Stephenson and Maria Schmidt  
 Tom and Melinda Straley  
 Beverly O. Stratman  
 James L. Strause  
 Kathleen Taylor  
 Jonathan Towne and Rebecca Noreen  
 Alice and Philip Trimble  
 Alice and John Tweedle  
 Dianne Vars  
 Elaine and Larry Wagner  
 Cherilee and James Walker  
 Ruth H. Walker  
 John M. Ware  
 Mary and Paul Waytenick  
 Rebecca and Wayne Weaver  
 Fran and Gene Weinberg  
 Mark and Jan Wheeler  
 Lloyd and Barbara White  
 Thelma J. Wilcox  
 Dolores Wilson  
 Lawrence A. Wilson  
 Donna and Richard Wolf  
 Teresa and Peter Wolf  
 Michele and Gary Wolff  
 Blue B. Woman  
 Karen and Danny Wright  
 Joyce and Larry Zimmerman

*\*deceased*

# Leadership Circle

Members of the Leadership Circle have contributed lifetime gifts of \$100,000 or more to the Indiana University Jacobs School of Music. We gratefully acknowledge the following donors, whose generosity helps the school reach new heights and build a sound financial framework for the future.

## Over \$10,000,000

The Estate of Barbara M. Jacobs

David H. Jacobs

Lilly Endowment, Inc.

## Over \$1,000,000

Louise Addicott-Joshi and Yatish Joshi  
Gary and Kathy Z. Anderson  
The Estate of Robert L. Carpenter  
Cook, Incorporated  
Dorothy Richard Starling Foundation

The Estate of Juanita M. Evans  
Georgina Joshi Foundation, Inc.  
Jack M. Gill, Ph.D., and Linda Challis Gill  
Jack\* and Dora Hamlin  
Krannert Charitable Trust

The Estate of Juana Mendel  
The Estate of Clara L. Nothacksberger  
The Estate of Anne and Paul Plummer  
Paul Dean Plummer Trust

## \$500,000 - \$999,999

The Estate of Ione B. Auer  
Alexander S. Bernstein  
Jamie Bernstein  
Nina Bernstein Simmons  
The Estate of George A. Bilque, Jr.  
Jack and Pam Boggs Burks  
Carl and Marcy Cook  
Gayle T. Cook  
The DBJ Foundation

The Estate of Mary M. and Frederick G.  
Freeburne  
The Estate of Wilbur W. Gasser and  
Mary Kratz Gasser  
Ann and Gordon Getty Foundation  
The Estate of Eva M. Heinitz  
Sandy Littlefield  
Shalin C. Liu  
Arthur R Metz Foundation

Murray and Sue Robinson  
Richard and Barbara Schilling  
The Estate of Eva Sebok  
Summer Star Foundation for Nature, Art  
and Humanity, Inc.  
The Estate of Ruth E. Thompson  
The Estate of Herman B Wells

## \$250,000 - \$499,999

W. Jameson Aebersold, D.M. and  
Sara A. Aebersold  
The Estate of Wilfred C. Bain  
Olimpia F. Barbera  
The Estate of Angeline M. Battista  
The Estate of Sylvia F. Budd  
The Estate of Marvin Carmack  
Christel DeHaan  
Christel DeHaan Family Foundation  
Beatrice P. Delany Charitable Trust  
The Estate of Alvin M. Ehret, Jr.  
The Estate of Lucille de Espinosa  
The Estate of Richard E. Ford  
Wade C.\* and Ann S. Harrison  
The Estate of Emma. B Horn

IBM Global Services  
Irwin-Sweeney-Miller Foundation  
The Estate of David H. Jacobs  
The Estate of Harold R. Janitz  
Korea Foundation  
Dr. Monika H. and Dr. Peter H. Kroener  
The Estate of Jeanette C. Marchant  
The Estate of Nina Neal  
Presser Foundation  
The Estate of Ben B. Raney, Jr.  
Joy and Rudolph\* Rasin  
The Estate of Naomi Ritter  
The Estate of Virginia Schmucker  
The Estate of Lee E. Schroeder  
Scott C. and Kay Schurz

The Estate of Maidee H Seward  
Bren Simon  
Cynthia L. & William E. Simon  
The Cynthia L. & William E. Simon, Jr.  
Foundation  
David and Jacqueline Simon  
Deborah J. Simon  
Herbert and Porntip Simon  
The Estate of Melvin Simon  
The Estate of Samuel W. Siurua  
Paul and Cynthia Simon Skjodt  
Marianne W. Tobias  
Mary H. Wennerstrom and  
Leonard M. Phillips\*  
The Estate of John D. Winters

## \$100,000 - \$249,999

Allen Whitehill Clowes Charitable  
Foundation, Inc.  
The Estate of Ursula Apel  
The Estate of Fred and Martha Arto  
The Estate of Robert D. Aungst  
Artur Balsam Foundation  
Barbro Osher Pro Succia Foundation  
Robert M. Barker and Patsy D. Fell-Barker  
Theodore W. Batterman Family  
Foundation, Inc.  
Bennet and Cynthia Brabson  
Brabson Library and Education Foundation  
The Estate of Jean R. Branch  
The Estate of Mildred J. Brannon  
The Estate of Frances A. Brockman  
Joan and Marvin Carmack Foundation  
Susan Cartland-Bode and Henry J. Bode  
The Estate of Aileen Chitwood  
Cole & Kate Porter Memorial Grad Fellow  
in Music Trust  
Jean and Doris Creek  
The Estate of Mavis M. Crow  
The Estate of Susie J. Dewey

The Estate of M. Patricia Doyle  
Luba Edlina-Dubinsky  
The Estate of William H. Earles  
The Estate of Robert A. Edwards  
Marianne V. Felton, Ph.D.  
Ford Meter Box Company, Inc.  
The Estate of Thomas L. Gentry  
Georgia Wash Holbeck Living Trust  
Paul and Ellen Gignilliat  
The Estate of Monroe A. Gilbert  
The Estate of Theodore C. Grams  
The Estate of Marjorie Gravit  
The Estate of David C. Hall  
Steve and Jo Ellen Ham  
The Estate of Margaret H. Hamlin  
Robert and Sandra Harrison  
Harrison Steel Castings Company  
The Estate of Jascha Heifetz  
Elwood H. Hillis  
Jeffrey Haynes Hillis  
Ruth W. Johnson  
The Estate of Eleanor Knapik  
The Estate of Eugene Knapik

Robert and Sara LeBien  
George William Little, Jr. and B. Bailey Little  
P. A. Mack, Jr.  
David and Neill Marriott  
Susan H. McDonald  
The Estate of Margaret E. Miller  
The Estate of Elisabeth P. Myers  
The Estate of Jean P. Nay  
Delano L. Newkirk and Luzetta A. Newkirk  
The Estate of Richard J. Osborn  
Penn Asset Equity LLC  
The Estate of Charlotte Reeves  
The Estate of Dagmar K. Riley  
Stephen L. and Margaret Cole Russell  
Fred and Arline Simon  
The Estate of Martha K. Siurua  
Smithville Telephone Company, Inc.  
The Estate of Maxine M. Talbot  
Technicolor USA, Inc.  
The Estate of Alice C. Thompson  
The Estate of Mary C. Tilton  
Robert J. Waller\*  
Kenneth C. Whitener, Jr.

# The Legacy Society

The Legacy Society at the Indiana University Jacobs School of Music honors the following individuals, who have included the Jacobs School as a beneficiary under their wills, trusts, life insurance policies, retirement plans, and other estate-planning arrangements.

David\* and Ruth Albright  
Richard and Ann Alden  
John and Adelia Anderson  
Gary and Kathy Z. Anderson  
Peggy K. Bachman  
Dennis and Virginia Bamber  
J. William Baus  
Mark and Ann\* Bear  
Christa-Maria Beardsley  
Michael E. Bent  
Neil A.\* and Dixie D. Bjurstrom  
Julian M. Blumenthal  
Richard and Mary Bradford  
W. Michael Brittenback and  
William Meezan\*  
Marjorie Buell  
Pamela S. Buell  
Gerald and Elizabeth Calkins  
Sarah Clevenger  
Eileen Cline  
Cynthia McAllister Crago and  
Don H. Crago  
Jack and Claire Cruse  
D. Michael Donathan, Ph.D.  
Luba Edlina-Dubinsky  
Stephany A. Dunfee  
Keith E. Eby  
David and Arlene Effron  
Sandra Elkins  
Michael J. Finton  
Philip\* and Debra Ford  
Marcella and Donald\* Gercken  
Glen G. Graber  
Jonathan L. Gripe  
Jack\* and Dora Hamlin  
Charles Handelman

James R. Hasler  
David and Mildred Hennessy  
Daniel F. Hewins  
Jeffrey H. Hillis  
David M. Holcenberg  
Julian L. Hook  
William T. and Kathryn\* Hopkins  
David E. Huggins  
Harriet Ivey  
Ted W. Jones  
Myrna M. Killey  
Martha R. Klemm  
Marilyn Bone Kloss  
Herbert Kuchler and Phil Evans  
Ray and Lynn Lewis  
Harlan L. Lewis and Doris F. Wittenburg  
Nancy Liley  
Ann B. Lilly  
George William Little, Jr., and  
B. Bailey Little  
Charles J. Marlatt  
Susan G. McCray  
Douglas McLain  
Sonna and Don Merk  
Robert A. Mix  
Cyndi Dewees Nelson and Dale Nelson  
Delano L. Newkirk and Luzetta A.  
Newkirk  
Fred Opie and Melanie S. Spewock  
John and Margaret Parke  
James J. Pellerite  
Jean R. Peters  
Jack W. Porter  
Nancy Gray Puckett  
Stanley E. Ransom  
Robert and Carlene Reed

Al and Lynn Reichle  
Gwyn and Barbara Richards  
Ilona Richey  
Murray and Sue Robinson  
D. Patricia and John W.\* Ryan  
Barbara and Arthur Sable  
Roy\* and Mary Samuelsen  
Vicki J. Schaeffer  
John and Lorna Seward  
Karen Shaw  
Odette F. Shepherd  
W. Richard Shindle, Ph.D.  
Curtis R. and Judy Chapline Simic  
Catherine A. Smith  
George P. Smith, II  
Steve and Mary T. Snider  
Craig A. Stewart and Marion Krefeldt  
William D. and Elizabeth Kiser Strauss  
Robert D. Sullivan  
R. Michael Suttle and Carolyn C. Suttle  
Hans\* and Alice M. Tischler  
LCDR Jeffrey Stewart Tunis  
Henry and Celicia Upper  
Nicoletta Valletti  
Robert J. Waller\* and Linda Bow  
Patrice M. Ward-Steinman  
Charles and Kenda\* Webb  
Michael D. Weiss  
Mary H. Wennerstrom and  
Leonard M. Phillips\*  
Robert E.\* and Patricia L. Williams  
Michael Williamson and Kathy Weston

\* deceased



SOCIETY OF THE  
**FRIENDS OF MUSIC**

## **Friends of Music Honor Roll**

### **Fiscal Year 2016-17**

The mission of the Society of the Friends of Music is to raise scholarship funds for deserving, talented students at the Indiana University Jacobs School of Music. The society was established in 1964 by a small group led by Herman B Wells and Wilfred C. Bain. We are pleased to acknowledge outright gifts made between July 1, 2016, and June 30, 2017.

### *Friends of Music*

#### ———— \$10,000 and Above ————

Jim and Joyce Grandorf

Larry and Celeste Hurst

Perry J. Maull

#### ———— \$5,000 - \$9,999 ————

Robert Barker and Patsy Fell-Barker  
W. Leland and Helen M. Butler

Eleanor J. Byrnes  
Mary Anne and Edward Fox

Steve and Jo Ellen Ham

### *Herman B Wells Circle*

#### **Gold**

#### ———— \$2,500 - \$4,999 ————

James and Susan Alling  
Anne T. Fraker  
Herbert Kuebler and Phil Evans

Julia and Charles McClary  
President Michael A. McRobbie and  
First Lady Laurie Burns McRobbie

Karen Shaw

#### **Silver**

#### ———— \$1,000 - \$2,499 ————

Ruth Albright  
Janet and William Anderson  
Margaret and Charles Athey  
John and Teresa Ayres  
Joshua D. Bell  
David and Paula Bonner  
Jim and Laura Byrnes  
Bill and Anita Cast  
Edward S. Clark  
Jean and Doris Creek  
Susan J. Devito

Harvey and Phyllis Feigenbaum  
Jack M. Gill, Ph.D. and Linda Challis Gill  
Robert and Martha Gutmann  
Dr.\* and Mrs. Frank N. Hrisomalos  
Peter P. Jacobi  
Jennifer A. Johnson  
Susan M. Klein and Robert Agranoff  
Dr. Monika H. and Dr. Peter H. Kroener  
Darby Earles McCarty  
Joe and Sandy Morrow  
Cyndi Dewees Nelson and Dale Nelson

Delano L. Newkirk and Luzetta A. Newkirk  
Ora H. Pescovitz  
Phyllis C. Schwitzer  
Curtis R. and Judy Chapline Simic  
Fred\* and Roberta Fox Somach  
L. Robert Stohler and Sylvia A. Stohler  
Thomas and Linda Taylor  
J. William Whitaker, M.D. and  
Joan M. Whitaker  
Mark Wiedenmayer  
John and Linda Zimmermann

# Dean Wilfred C. Bain Circle

## Patrons

### \$500 - \$999

James and Ruth Allen  
Peggy K. Bachman  
Mark K. Bear  
Malcolm H. Brown  
Cathleen Cameron  
Carter and Allyson Cast  
John W. Clower  
Gayle T. Cook  
Dr. and Mrs. Fred W. Dahling  
Carolyn and Charles Deodene  
James V. and Jacqueline C. Faris  
Robert R. Greig  
Darlene and Rajih Haddawi  
Robert and Ann Harman

Lenore S. Hatfield  
Elizabeth Hewitt and Richard Small  
Jeffrey and Lesa Huber  
Sarah J. Hughes and A. James Barnes  
Linda and Kenneth Kaczmarek  
Vicki and Thomas King  
Howard and Linda Klug  
George and Cathy Korinek  
Herb and Judy Miller  
Carol and Wade Peacock  
Gina Reel and Charles Thompson\*  
John and Lislott Richardson  
Murray and Sue Robinson  
L. David Sabbagh

Randy Schekman and Nancy Walls  
Marilyn F. Schultz  
Scott C. and Kay Schurz  
Anthony and Jan Shipp  
Janet S. Smith  
Blount and Anna Stewart  
Ellen Strommen  
Harue and Tsuyoshi Tsutsumi  
Henry and Celicia Upper  
Martha F. Wäiles  
Mary H. Wennerstrom  
Patricia L. Williams  
Galen Wood

## Sustainers

### \$300 - \$499

Gary and Kathy Z. Anderson  
Olimpia F. Barbera  
Shirley Bell  
Elizabeth and Gerald Calkins  
James and Carol Campbell  
Bart and Cinda S. Culver  
Lee and Eleanore Dodge  
Danny and Jeanette Duncan  
David and Arlene Effron  
Stephen A. Ehrlich  
Donald and Sandra Freund  
Michael and Patricia Gleeson  
Ralph E. Hamon, Jr.  
Andrew J. Hanson and Patricia L. Foster

R. Victor Harnack  
Steven L. Hendricks  
Ernest N. Hite and Joan E. Pauls  
Diane S. Humphrey  
Anna L. Jerger  
Margaret and Donald Jones  
Martin and Linda Kaplan  
Thomas and Mary Kendrick  
Peter V. Koenig and Mary E. Jamison  
Yvonne Y. Lai and Kenneth P. Mackie  
Ayelet E. Lindenstrauss and Michael J. Larsen  
Bill and Ellie Mallory  
Rosemary G. Messick  
Dawn E. Morley

Frank and Nancy Nagler  
Lois S. Pless  
Stephen Pock and David Blumberg  
Bill and Dorothy Richards  
Kathleen C. Ruesink  
Juliet Sablosky  
Mark and Anne Sauter  
Judith L. Schroeder and Edward Mongoven  
John and Lorna Seward  
Lewis H. Strouse  
Elizabeth R. Vance-Rudolph  
Kenneth and Marcia VanderLinden  
Jerry and Joan Wright  
Steve and Judy Young

## Donors

### \$100 - \$299

Eleanor and Michael Aisenberg  
David and Melanie Alpers  
Debra K. Athey  
Carolyn A. Bailey  
Mark J. Baker  
David and Ingrid Beery  
Frances J. Bell  
Elizabeth and Bruce Bennett  
Norma Beversdorf-Rezits and Joe Rezits  
Charles F. Bonser  
Ellen R. Boruff  
Jaclyn and Bill Brizzard  
Jack and Pam Boggs Burks  
Derek and Marilyn Burleson  
Barbara J. Byrum  
Beatrice H. Cahn  
Barbara J. Carlson  
Carroll Cecil and Virginia Long-Cecil  
Karen-Cherie Cogane and Stephen Orel  
Donald and Shirley Colglazier  
Jean and Don\* Cook  
Mary Alice Cox and Jim Koch  
David Crandall and Saul Blanco  
J. Robert Cutter  
John and Carol Dare  
Jeffrey L. Davidson and Pamela Jones  
Davidson  
Samuel J. Davis  
Wendell R. Davis  
Julia DeHon  
Carol J. Dilks  
Frank and Ruth DiSilvestro

Deborah Divan  
Amy Dorfman and Donald Capparella  
Beth and John Drewes  
David A. Drinkwater  
Sarah J. Dunn and J. Michael Dunn  
John R. Edgeworth  
Anne C. Eisfeller  
Joe and Gloria Emerson  
Elaine and Philip Emmi  
James and Joan Ferguson  
Richard and Susan Ferguson  
Robert and Geraldine Ferguson  
Bruce and Betty Fowler  
Sharon and Norman Funk  
Paul and Ellen Gignilliat  
Elizabeth and Robert Glassey  
Constance Cook Glen and James Glen  
Vincent M. Golik, III  
Sylvia and Harold Gortner  
John J. Greenman  
Jerry and Linda Gregory  
Suzanne and Richard Gunther  
Samuel and Phyllis Guskin  
Hendrik and Bieneke Haitjema  
Kenneth and Judy Hamilton  
Stanley and Hilary Hamilton  
Ken and Janet Harker  
Pierrette Harris  
Robert and Emily Harrison  
James Richard Hasler  
Adrien B. Himm  
John D. Hobson

Rona Hokanson  
Margaret and George Holden  
Richard and Lois Holl  
Norman and Judy Holy  
Joseph and Suzanne Hopkins  
Takeo and Tamaki Hoshi  
Linda S. Hunt and Timothy M. Morrison  
Roger and Carol Isaacs  
Warren W. Jaworski  
Margaret Jenny and Jack Fearnside  
Lora D. Johnson  
Burton and Eleanor Jones  
Marilyn J. Keiser  
Marilyn J. Kelsey  
Jack and Julie King  
Rose Krakovitz  
Kate M. Kroll  
Shirley Krutilla  
Eric Lai and Grace Lok  
Arthur W. Larson  
Joan B. Lauer  
Jhani Laupus and Mike Sample  
Julia and John\* Lawson  
Diana Dehart Lehner  
Ann W. Lemke  
Leslie and Kathleen Lenkowsky  
Lesley and Mark Levin  
Harlan L. Lewis and Doris F. Wittenburg  
Nancy Liley  
Peter G. Lorenzen  
Pamela Williamson Lowe and David Lowe  
P. A. Mack, Jr.

Jeanne and James Madison  
 Samuel Mallor  
 Mayer and Ellen Mandelbaum  
 Dr. Rochelle G. Mann  
 David and Catherine Martin  
 Nancy G. Martin  
 Andrea Matthias  
 Jerry A. and Jane P. McIntosh  
 Julia E. Merkt  
 Susan E. Middlestadt  
 Geraldine and John Miller  
 Ronald and Joyce Miller  
 Laura J. Mills\*  
 G. Scott Mitchell and Rosalind Burwell  
 Steve and Sandra Schultz Moberly  
 Michael H. Molenda, Ph.D. and Janet C.  
   Stavropoulos, Ph.D., J.D.  
 Gerald L. and Anne Klock Moss  
 Pat and Jack Mulholland  
 Patricia Murphy Pizzo  
 Heather, Daniel, and Nicolas Narducci  
 Lenny and Lou Newman  
 Evelyn M. Niemeyer  
 David and Barbara Nordloh  
 Marilyn F. Norris  
 Ted and Soili Ochsner  
 Edward and Patricia O'Day  
 Wesley and Patricia Oglesby  
 Harold and Denise Ogren  
 David and Diane O'Hagan

Joan C. Olcott  
 Richard and Jill Olshavsky  
 Margaret and J. Patrick\* Page  
 Linda and David Pennebaker  
 Dorothy L. Peterson  
 Carol Pierce and Carl Rexroad\*  
 Fred A. Place  
 Raymond A. Polstra  
 Gary and Christine Potter  
 Frona and Ron Powell  
 Robert and Patricia Powell  
 Eileen K. Prose  
 Jill Robinson and Russell Percifield  
 Allan and Barbara Ross  
 Edward and Janet Ryan  
 James and Helen Sauer  
 Richard K. Schall  
 Norma E. Schenck  
 Richard and Barbara Schilling  
 Lisa Scrivani-Tidd and Roderick Tidd  
 J. Robert Shine  
 Rebecca and John Shockley  
 Janet A. Shupe  
 Michael A. Simkowitz  
 David K. Smith and Marie Libal-Smith  
 Laird and Nancy Smith  
 Linda K. Smith  
 John L. Snyder  
 Stephen T. Sparks  
 David and Alice Starkey

Gene and Ellen Stern  
 Linda Strommen  
 Bill and Gayle Stuebe  
 Elzbieta Szymt and John Karaagac  
 Ellen C. Tamura  
 Yasuoki Tanaka  
 Jeffrey R. Tanski  
 Saundra B. Taylor  
 Charlotte H. Templin  
 Patricia L. Thoms  
 Linda J. Tucker  
 LCDR Jeffrey Stewart Tunis  
 Sharon P. Wagner  
 George Walker and Carolyn Lipson-Walker  
 Donovan Walling and Samuel Troxal  
 Mary A. Watt and William C. Strieder  
 Rebecca and Wayne Weaver  
 Robert and Patricia Webb  
 Fran and Gene Weinberg  
 Kay and Ewing Werlein  
 Roger and Barbara Wesby  
 Philip and Shandon Whistler  
 G. Cleveland and Frances\* Wilhoit  
 Jim and Ruth Witten  
 Donna and Richard Wolf  
 Sara and Thomas Wood  
 Margaret and John Woodcock  
 Timothy and Sara Zwickl

*\*deceased*

## Corporations and Foundations

Avery & Greig, LLP  
 Benevity Social Ventures, Inc  
 Bloomington Thrift Shop

Culver Family Foundation  
 Five Star Quality Care, Inc.  
 Joshua Bell, Inc.

Meadowood Retirement Community  
 United Technologies Corporation

## Companies Providing Matching Gifts

Eli Lilly & Company  
 Fidelity Charitable Gift Fund

IBM Corporate Foundation  
 Northwestern Mutual Foundation

Vanguard Charitable Endowment Program

## Planned Gifts

We are grateful to those individuals who have expressed their interest in ensuring scholarship support for tomorrow's students today by making a planned gift through a testamentary gift in their estate planning by a will or trust, charitable gift annuity, or retirement plan. We are pleased to acknowledge those individuals who have provided gift documentation.

David\* and Ruth Albricht  
 Peggy K. Bachman  
 Mark and Ann\* Bear

Marvin Carmack\*  
 Cyndi Dewees Nelson and Dale Nelson  
 Jean and Charles\* Peters

Curtis R. and Judy Chapline Simic  
 LCDR Jeffrey Stewart Tunis  
 Patricia L. Williams



# Memorials and Tributes

Each year, we receive gifts in honor or in memory of individuals whose leadership and good works have enriched the lives of so many. We are pleased to recognize those special individuals and the donors whose gifts they have inspired.

Lois C. Adams Miller, in memory of Professor Margaret White  
Carol and Roger Allman, in honor of Glen and Lee Allman  
Joseph and Sharon Amlung, in honor of Timothy D. Amlung  
Janet and William Anderson, in honor of Ellen Strommen and  
Linda Strommen

Charles and Margaret Athey, in memory of Professor Walter Robert  
Debra K. Athey, in memory of Susie J. Dewey  
Susan H. Backer, in memory of Stephen A. Backer  
Chlois and Paul Barkman, in memory of Karen A. Bailey  
Allan R. Bartel and Lorie Selander Bartel, in memory of Karen A. Bailey  
Beth and Frederick Behning, Jr., in memory of Karen A. Bailey,  
in memory of Frederick C. Ebbs, and in memory of Ruth L. Ebbs  
Frances J. Bell, in memory of G. S. Bell  
Shirley Bell, in memory of Alan P. Bell  
Norma B. Beversdorf-Rezits and Joseph M. Rezits, D.M.A.,  
in honor of Olimpia F. Barbera

Christopher and Deborah Botos, in honor of the Rose Bowl Tribute  
Debra and Louis Britton, in memory of Karen A. Bailey  
V. Barbara Bush, in memory of Hezekiah and Dorothy Bush  
Michael A. Camp, in memory of Robin C. Hunter  
Samuel and Sue Carmichael, in memory of Karen A. Bailey  
Charles and Eleanor Carter on behalf of the Tuesday Morning Tap Class:  
Denise, Ellie, Marilyn, Gayle, Nancy, Jeannie, and Alix,  
in memory of Karen A. Bailey

Steve and Kenya Cobb, in memory of Karen A. Bailey  
Marion and William Crawford, Jr., in honor of Buck Crawford,  
and in honor of Betty Crawford

David A. DePeters and Elizabeth Hainen DePeters,  
in honor of Susann H. McDonald

Jason Derrick, in honor of Lee Pryor Uhlhorn  
Susan J. Devito, in memory of Dominic Devito  
Ruth and Frank R. DiSilvestro, in memory of Margaret Strong  
David A. Drinkwater, in memory of Oswald G. Ragatz, D.M.A.

Hannah L. Dubina, in memory of Marjorie J. Dubina  
Stephany A. Dunfee, in memory of Jack C. Dunfee, Jr.  
Patricia Eckstein, in memory of Richard O. Bremigan  
Frank and Vickie Edmondson, in memory of Margaret Edmondson  
and in memory of Frank K. Edmondson, Ph.D.

Stephen A. Ehrlich, in memory of Harold Ehrlich  
and in memory of Goldye Ehrlich

Eichhorn and Eichhorn LLP, in memory of Karen A. Bailey  
Phyllis B. Ferrell, in memory of Karen A. Bailey

Myra and Stephen Foster, in memory of Mildred Butz Manis  
Anne T. Fraker, in memory of her husband, Rupert A. Wentworth  
Donald and Sandra R. Freund, in memory of David N. Baker,  
in honor of Lida M. Baker, and in memory of Kenda M. Webb

Agnes H. Friel, in memory of Karen A. Bailey  
Scott and Susan Gorham, in honor of Charles J. Gorham  
Lisa B. Greenfield and Frank Nothaft, in honor of  
Janette S. Fishell, D.M.

Janet and Walter Gross, Jr., in memory of Karen A. Bailey  
Joe and Kathryn Gunther, in memory of Walter J. Blanton  
Darlene and Rajih Haddawi, in honor of Shirley Bell, in honor of  
Joshua D. Bell, and in memory of Myfanwy Richards

Jo Ellen and Steve Ham, in memory of David N. Baker  
Melody Harrington, in memory of Kenneth C. Ford  
Kimberly and Thomas Hauser, in memory of Karen A. Bailey  
Anne and J.B. Hayes, Elizabeth Hamm & Family, and Eric Hayes &  
Family, in memory of Karen A. Bailey

Diane and Stephen Hiatt, in memory of Karen A. Bailey  
Jeffrey and Lesa Huber, in memory of Carol M. Lorenzen  
Michael Hurrubise and Ann E. Murray, in honor of Ellen C. Gignilliat,  
in honor of Craig C. Grannon, and in honor of Linda D. Grannon  
Michele and Robert Johns, in honor of the Alumni Band Wedding  
for Sarah Calderon on September 3, 2016

Mark and Susan Johnson, in memory of Karen A. Bailey  
Hilda Jones, in honor of Holly Wood  
Patricia C. Jones, in memory of Richard E. Jones  
James and Jenice Keeler, in memory of Karen A. Bailey

Marilyn J. Keiser, in honor of Brent M. Gault  
Elaine and Ken Keltner, in memory of Karen A. Bailey  
Joseph C. Kraus, in memory of George C. Kraus  
Cynthia and James Lambrecht, in honor of Ray and Molly Cramer  
Amy and Paul Lampi, in memory of Richard Allen Chisenhall  
Dennis and Judith Leatherman, in memory of Phyllis Leatherman,  
in memory of Dale Leatherman, and in honor of Michael L.  
Schwartzkopf

Stephen B. Lewis and Kathryn L. Ruff, in memory of Karen A. Bailey  
Craig and Kara Lidell, in honor of Andreas Poulimenos  
Carolyn M. Lipson-Walker, Ph.D. and George L. Walker,  
in memory of Elizabeth M. Saba

Samuel Mallor, in memory of Dorothy Mallor  
Barbara Massie, in memory of Harold L. Fenimore  
George and Janet McDonald, in honor of Susann H. McDonald  
David E. McNeel, in honor of David H. Jacobs

Steven A. McNeil, in honor of Ray E. Cramer  
Douglas M. Morgan, in honor of Matthew A. Johnson  
Jim and Jackie Morris, in honor of P. E. MacAllister, in honor of  
Sylvia A. McNair, and in honor of Timothy R. Noble

Lawrence Myers, Jr., in memory of Betty J. Myers  
Loretta Nelson, in honor of Donald Trump  
Beatrice and Melvin Nevel, in memory of Irving L. Sablosky  
Never Stop Moving, LLC on behalf of the Luigi Jazz Dance Class,  
in memory of Karen A. Bailey

Marilyn F. Norris, in memory of Violette Verdy  
Margaret A. Page, in memory of J. Patrick Page  
Eleanor and James Pauloski, in memory of Karen A. Bailey  
Ora H. Pescovitz, M.D., in honor of Sylvia A. McNair  
Wayne H. Peterson, in honor of Marilyn J. Keiser  
Kathleen and Richard Phillips, Jr., in memory of Karen A. Bailey  
Gerry and Karen Porter, in memory of Karen A. Bailey  
James H. Pratt, D.B.A. and Kathryn A. Pratt, in memory of  
Karen A. Bailey

Eileen Prose, in memory of Susie J. Dewey  
R. Alan Quick and Brenda, in honor of Professor André Watts,  
and in honor of Joan C. Brand  
Donald and Jean Rhoads, in honor of Peter P. Jacobi and in honor of  
Charles H. Webb, Jr., D.M.

Marcia and Ronald Rice, in memory of Karen A. Bailey  
Fran and Richard Rosman, in memory of Ella Fitzgerald  
Fran and Richard Rosman, in memory of John Hasse and  
Sonya Melescu's marriage

Juliet Sablosky, in memory of Irving L. Sablosky  
Maria K. Schmidt, Ph.D. and Paul B. Stephenson, in memory of  
David N. Baker

Mary E. Scroggs, in memory of R. Norwood Scroggs  
Gerri and Mark Shaffer, in memory of Karen A. Bailey  
Belinda D. Shaw, in memory of Margaret Strong  
David A. Sheldon, Ph.D., in memory of Barbara W. Sheldon  
Beverly and Stuart Skelley, in memory of Walter J. Blanton  
Angelia and Fred Smith, in memory of Margaret Strong  
Lee Ann Smith, in honor of David H. Jacobs, and in honor of  
Gwyn and Barbara Richards

Cynthia and Kenneth Stella, in memory of Karen A. Bailey  
Kevin and Leigh Stella, in memory of Karen A. Bailey  
Melinda and Tom Straley, in honor of Benjamin P. Straley  
Beverly O. Stratman, in memory of Violette Verdy  
Ellen Strommen, in memory of Laura J. Mills, and in honor of  
Louise and Leonard J. Newman

Linda Strommen, in honor of Ellen Strommen  
Lewis H. Strouse, D.A., in memory of Lewis K. and Cora H. Strouse  
Nancy A. Tardy, in memory of Karen A. Bailey  
Patricia L. Thoms, in memory of Susie J. Dewey  
April and Dennis Tini, in memory of David N. Baker and in honor of  
Lida M. Baker

Tamara B. Trittschuh, in memory of Karen A. Bailey  
Ruby Wampler, in memory of David N. Baker  
Renee Watts, in memory of Walter J. Blanton

Catherine and Larry Waynick, in honor of Marilyn J. Keiser  
 Susan and W. Michael Wells, in memory of Karen A. Bailey  
 Mary H. Wennerstrom, in honor of Janette S. Fishell, D.M.  
 Mark Wiedenmayer, in honor of Lida M. Baker and in honor of  
 Louise and Leonard J. Newman  
 Chad and Sarah Wood, in honor of Holly Wood

Galen Wood, in honor of David H. Jacobs  
 Donna Worth, in honor of Dana T. Marsh  
 Jamie and Rick Yemm, in memory of Karen A. Bailey  
 Judith and Steven Young, in honor of Richard L. Saucedo

\*deceased

## Endowments and Scholarships

The IU Jacobs School of Music gratefully acknowledges those individuals, corporations, and foundations who provide support through endowments and scholarships. The generosity and goodwill of those listed below puts a Jacobs School of Music education within the reach of many. To learn more about investing in our talented students, please contact Melissa Dickson, executive director of external affairs, at dickson9@indiana.edu or 812-855-4656.

### *Jacobs School of Music*

William Adam Trumpet Scholarship  
 Valerie Adams Memorial Scholarship  
 Jamey Aebersold Jazz Combo Fund  
 Jamey and Sara Aebersold Jazz Fellowship  
 Richard L. and Ann T. Alden Scholarship  
 Gary J. and Kathy Z. Anderson Scholarship in Music Excellence  
 John T. and Adelia R. Anderson Music Scholarship  
 Violette Verdy and Kathy Ziliak Anderson Chair in Ballet  
 Willi Apel Early Music Scholarship Fund  
 Aronoff Percussion Scholarship  
 Martha and Fred Arto Music Scholarship  
 Aungst Scholarship  
 Stephen A. Backer Memorial Scholarship  
 Dr. Wilfred C. Bain Music Alumni Association Scholarship  
 Wilfred C. Bain Opera Scholarship Endowment  
 David N. Baker Jazz Scholarship  
 David N. Baker Visiting Artist Series  
 David Baker, Jr. Jazz Scholarship  
 Ballet Department Fund  
 Artur Balsam Chamber Music Project  
 Band Centennial Fund  
 Anthony and Olimpia Barbera Latin American Music Scholarship  
 Olimpia Barbera Recording Fund for the Latin American Music Center  
 Louise Bass and James F. Mellichamp Organ Scholarship  
 Earl O. Bates Memorial Scholarship  
 Eric D. Batterman Memorial Scholarship  
 Joseph Battista Memorial Fund  
 William Baus Historical Performance Institute Fund for Early Music  
 "Because You Want To Be Here" Scholarship  
 Achasa Beechler Music Scholarship Fund  
 William Bell Memorial Fund  
 Colleen Benninghoff Music Scholarship  
 The Michael E. Bent Scholarship  
 Leonard Bernstein Scholarship  
 John E. Best Scholarship  
 Thomas Beversdorf Memorial Scholarship  
 Neil A. Bjurstrom Horn Scholarship  
 The Harriett Block Operatic Scholarship  
 Mary R. Book Music Scholarship Fund  
 Boonshoft Family Music Scholarship  
 Ruth Boshkoff Scholarship  
 Fred Wilkins and Richard W. Bosse Flute Scholarship  
 Julia Beth Brabson Memorial Fellowship  
 Julia Brabson Scholarship  
 Mary E. and Richard H. Bradford Fellowship  
 Mary E. and Richard H. Bradford Opera Informance Support Fund  
 Brass Instrument Scholarship  
 W. Michael Brittenback and William Meezan Organ Scholarship  
 Frances A. Brockman Scholarship  
 A. Peter and Carol V. Brown Research Travel Fund  
 Kenneth V. & Audrey N. Brown Memorial Scholarship  
 Alonzo and Mary Louise Brummett Scholarship in Music  
 Sylvia Feibelman Budd and Clarence Budd Scholarship  
 Marjorie J. Buell Music Scholarship

Marjorie J. Buell Music Scholarship in Excellence  
 Pamela Buell Music Scholarship  
 Vivian N. Humphreys Bundy Memorial Scholarship Fund  
 Peter Burkholder and Doug McKinney Musicology Fund  
 Pam and Jack Burks Professorship  
 Elizabeth Burnham Music Instrument Maintenance Fund  
 Dorothy Knowles Bush and Russell Jennings Bush Piano Scholarship  
 The Camerata Scholarship  
 John and June Canfield Bloomington Pops Scholarship  
 Joan and Marvin Carmack Scholarship  
 Robert L. Carpenter Fund  
 Charles Diven Campbell Piano Scholarship  
 Susan Cartland-Bode Performance Excellence Scholarship  
 Susan Cartland-Bode Scholarship  
 Walter Cassel Memorial Scholarship  
 Austin B. Caswell Award  
 Center for the History of Music Theory and Literature Endowment Fund  
 Alan Chepregi Memorial Scholarship  
 Choral Conducting Department Enhancement Fund  
 Lucy and Samuel Chu Piano Scholarship  
 Emma H. Claus Scholarship Fund  
 Dr. Sarah Clevenger Scholarship  
 Sarah Clevenger Opera Production Fund  
 Eileen Cline Music Fund  
 Ginny Fisher Cole Singing Hoosiers Scholarship  
 Composition Department Fund  
 Cook Band Building Fund  
 Patricia Sorenson Cox Memorial Scholarship  
 Don H. and Cynthia McCallister Crago Scholarship  
 Ray E. Cramer Graduate Scholarship  
 Ray Cramer Scholarship  
 Jean and Doris Creek Scholarship in Trumpet  
 Donna and Jean Creek Scholarship  
 Donna and Jean Creek Scholarship in Voice  
 Mavis McRae Crow Music Scholarship Fund  
 T.F. Culver and Emma A. Culver Scholarship Fund  
 Jeanette Davis Fund  
 Pete Delone Memorial Scholarship  
 Alfonso D'Emilia Scholarship Fund  
 Department of Musicology Fund  
 Department of Music Education Fund  
 Dr. D. Michael Donathan Scholarship  
 Gayl W. Doster Scholarship in Music  
 Rostislav Dubinsky Music Scholarship  
 Jack and Stephany Dunfee Musical Arts Center Fund  
 Jack and Stephany Dunfee Musical Arts Center Scholarship  
 Fred Ebbs Memorial Scholarship  
 Eby Foundation Singing Hoosiers Scholarship  
 The Jeanette MacDonald-Nelson Eddy Opera Scholarship Fund  
 Maestro David and Eleanor Arlene Efron Music Conducting Scholarship  
 David Eissler Memorial Scholarship Fund  
 Ruth L. Elias Scholarship Fund  
 Guillermo Espinosa Endowment Fund  
 Merle Evans Scholarship

Fairview Elementary School String Project  
 Fairview Elementary School String Project II  
 Philip Farkas Horn Scholarship  
 Daniel Feldt Music Scholarship  
 Eleanor Fell Scholarship  
 Rose and Irving Fell Violin Scholarship  
 The Michael J. Finton Scholarship  
 Five Friends Master Class Series  
 The Philip C. Ford Scholarship in Music  
 Ford-Crawford Recital Hall Maintenance Fund  
 Frederick A. Fox Composition Scholarship  
 William and Marcia Fox Scholarship in Music  
 Dr. Frederick and Mary Moffatt Freeburne Teaching Fellowship  
 Janie Fricke Music Fund for Aspiring Musicians  
 The Friday Musicale Scholarship  
 J.N. Garton Memorial Scholarship  
 Glenn Gass Scholarship  
 Bill and Mary Gasser Scholarship/Fellowship Endowment  
 Lynn E. Gassoway-Reichle Chair in Piano  
 Robert Gatewood Opera Fund  
 Cary M. Gerber Scholarship Fund  
 Marcella Schahfer Gercken Band Scholarship  
 Richard C. Gigax Memorial Scholarship Fund  
 Gignilliat Music Scholarship Fund  
 Ellen Cash Gignilliat Fellowship  
 Linda C. and Jack M. Gill Chair in Violin  
 Linda Challis Gill and Jack M. Gill Music Scholarship  
 Gladys Gingold Memorial Scholarship  
 Josef Gingold Violin Scholarship Fund  
 Charles Gorham Trumpet Scholarship  
 St. Luke's UMC/Goulding and Wood Organ Scholarship  
 Martin Eliot Grey Scholarship  
 Montana L. Grinstead Fund  
 Jonathan L. Gripe Fund  
 Arthur and Ena Grist Scholarship Fund  
 Murray Grodner Double Bass Scholarship  
 Wayne Hackett Memorial Harp Scholarship Fund  
 Jack I. & Dora B. Hamlin Endowed Chair in Piano  
 Margaret H. Hamlin Scholarship  
 Judith Hansen-Schwab Singing Hoosiers Scholarship  
 Margaret Harshaw Scholarship  
 Russell A. Havens Music Scholarship  
 Bernhard Heiden Scholarship  
 Jascha Heifetz Scholarship  
 Eva Heinitz Cello Scholarship Fund  
 William Gammon Henry, Jr. Scholarship  
 Julius and Hanna Herford Fund for Visiting Scholars and  
     Conductors in Choral Music  
 Dorothy L. Herriman Scholarship Fund  
 Daniel F. Hewins Music Scholarship  
 Daniel F. Hewins Vocal Performance Scholarship  
 Margaret E. Hillis Memorial Scholarship in Choral Conducting  
 Mark H. Hindsley Award for Symphonic Band  
 Mark H. Hindsley Endowed Fund for Symphonic Band  
 Historical Performance Institute Fund  
 Ernest Hoffzimmer Scholarship  
 Leonard Hokanson Chamber Music Scholarship  
 Georgia Wash Holbeck Fellowship  
 David Holcenberg Singing Hoosiers Scholarship  
 William T. Hopkins Scholarship  
 William S. and Emma S. Horn Scholarship Fund  
 Harry and Ruth Houdeshel Memorial Flute Scholarship  
 Bruce Hubbard Memorial Scholarship  
 Dwan Hublar Music Education Scholarship  
 Lawrence P. Hurst Medal in Double Bass  
 Thomas Pegg Hustad Jazz Collection Cataloging Fund  
 Harriet M. Ivey Music Scholarship  
 IU Children's Choir Fund  
 International Harp Competition  
 Barbara and David Jacobs Fellowship  
 Barbara and David Jacobs Scholarship  
 Barbara and David Jacobs School of Music Enhancement Fund  
 David H. Jacobs Chair in Music  
 David Henry Jacobs Fund  
 David Henry Jacobs International Overseas Study Scholarship  
 David Henry Jacobs Music Scholarship  
 Jacobs Bicentennial Scholars and Fellows in Honor of Charles H. Webb

Jacobs Endowment in Music  
 Jacobs School of Music Annual Scholarships  
 Jacobs School of Music International Overseas Study Scholarship  
 Jacobs School of Music Office of Entrepreneurship & Career  
     Development Fund  
 Eva Janzer Memorial Fund  
 Jazz Double Bass Studio Fund  
 Wilma Jensen Organ Scholarship  
 Dick and Louise Johnson Foundation Music Scholarship  
 Ted Jones and Marcia Busch-Jones Musical Arts Center Fund  
 Ted Jones Musical Arts Center Executive Director of Production Fund  
 Georgina Joshi Composition Commission Award  
 Georgina Joshi Fellowship  
 Georgina Joshi Fund  
 Georgina Joshi Handelian Performance Fund  
 Georgina Joshi International Fellowship  
 Georgina Joshi Recording Arts Studio Fund  
 Walter and Freda Kaufmann Prize in Musicology Fund  
 Mack H. Kay Scholarship for Excellence in Jazz Composition Fund  
 Marilyn Keiser Organ Scholarship  
 Thomas R. and Alice P. Killey Scholarship in Voice  
 Martin Luther King, Jr. Scholarship  
 Betsy Kiser Scholarship  
 Klinefelter Scholarship Fund  
 Marilyn Bone Kloss Music Fellowship  
 Howard and Linda Klug Clarinet Scholarship  
 Eugene J. and Eleanor J. Knapik Fund  
 Lucie M. Kohlmeier Music Scholarship in Voice  
 Korea Scholarship and Faculty Fund in Music  
 Tibor Kozma Instrumental Conducting Scholarship  
 Robert Kraus Memorial Scholarship  
 Krefeld-Stewart Scholarship in Voice and Ballet  
 Peter and Monika Kroener Dean's International Fellowship in Music  
 George and Elizabeth Krueger Scholarship  
 Herbert O. Kuebler Music Fellowship  
 Michael Kuttner Musical Education Fund  
 Robert LaMarchina Music Scholarship  
 Latin American Music Center Fund  
 James and Kathie Lazerwitz Visiting Artists Fund  
 Sara and Robert LeBien Jacobs School of Music Scholarship  
 Sara J. and Robert F. LeBien Scholarship  
 Lewis Family Scholarship in Music  
 Martha Lipton Scholarship  
 Brenda Bailey and G. William Little, Jr. Scholarship  
 Brenda Bailey and G. William Little, Jr. Voice Scholarship  
 Jay Lovins Memorial Scholarship Fund  
 Ethel Louise Lyman Memorial Fund  
 P.E. MacAllister Scholarship in Voice  
 John Mack Memorial Scholarship in Oboe  
 Virginia MacWatters Abbee Scholarship  
 Patrice Madura Scholarship  
 Jeanette Calkins Marchant Friends of Music Scholarship  
 Marching Hundred Fund  
 Marching Hundred Hall Fund  
 Marching Hundred Instrument Fund  
 Wilda Gene Marcus Piano Scholarship  
 Jay Mark Scholarship in Music  
 Georgia Marriott Scholarship  
 Arthur W. Mason Music Scholarship Fund  
 Matula Family RedStepper Fund  
 Mary Justine McClain Opera Theater Fund  
 Susan Sukman McCray Scholarship  
 Susann McDonald Fund  
 Susann McDonald Harp Study Fund  
 Katherine V. McFall Scholarship  
 The William C. McGuire Scholarship  
 Bernardo and Johanna Mendel Graduate Scholarship for the  
     School of Music  
 Menke/Webb/Sturgeon, Inc. Fund  
 Donald B. and Sonna A. Merk Music Scholarship  
 B. Winfred Merrill Scholarship Fund  
 Lou and Sybil Mervis String Quartet Fund  
 Arthur R. Metz Carillonneur Fund  
 Arthur R. Metz Organ Department Fund  
 Otto Miessner Memorial Music Scholarship Fund  
 Nathan A. and Margaret Culver Miller Memorial Scholarship Fund  
 Dorothy Hoff Mitchell Scholarship

Peter Steed Moench Scholarship  
 Jack and Marilyn Moore Graduate Flute Fellowship  
 Marcel Mule Scholarship Fund  
 Music Dean's Dissertation Prize Endowment Fund  
 Music Library Fund  
 Music Theory Fund  
 Nellie Woods Myers Scholarship  
 Ben Nathanson Scholarship  
 Nina Neal Scholarship Fund  
 Robert Erland Neal Music Scholarship  
 Delano and Luzetta Newkirk Musical Arts Center Fund  
 Otto Nothhacksberger Endowed Chair  
 Otto Nothhacksberger Memorial Fund  
 Eugene O'Brien Bicentennial Executive Associate Deanship  
 Robert O'Hearn Fund  
 Robert R. O'Hearn Opera and Ballet Production Fund  
 On Your Toes Fund  
 Opera Illinois League Scholarship  
 Opera Production Fund  
 Bernard Opperman Memorial Fund  
 Organ Department Fund  
 Juan Orrego-Salas Scholarship  
 The Richard & Eleanor Osborn Scholarship Endowment for Music  
 Namita Pal Commemorative Award  
 Jason Paras Memorial Fund  
 Marie Alice and Gilbert Peart Scholarship  
 James and Helen Mae Pellerite Music Library Fund  
 James & Helen Pellerite Flute Scholarship  
 Jackie Pemberton Memorial Scholarship Fund  
 Doris Klausung Perry Scholarship  
 Harry B. Peters Endowed Scholarship  
 Harvey Phillips Memorial Scholarship  
 Harvey Phillips Tuba-Euphonium Quartet Composition Contest  
 Walter and Rosalee Pierce Scholarship in Organ  
 ILdebrando Pizzetti Memorial Scholarship Fund  
 Cole and Kate Porter Memorial Scholarship  
 George E. Powell, III Scholarship  
 Pre-College Ballet Scholarship  
 The Presser Foundation Scholarship and the Presser Music Award  
 Project Jumpstart Fund  
 Garry Lee and Nancy Gray Puckett Scholarship  
 Mary and Oswald G. Ragatz Organ Scholarship  
 Stanley Ransom Scholarship in Voice  
 Robert C. Rayfield Memorial Scholarship  
 RedStepper Fund  
 RedStepper Scholarship  
 Charlotte Reeves Chamber Music Endowment Fund  
 Albert L. and Lynn E. Reichle Scholarship in Music  
 Albert L. Reichle Chair in Trumpet  
 Dorothy Rey Scholarship  
 The Sally W. Rhodes Scholarship  
 Gwyn and Barbara Richards Family Scholarship  
 Gwyn Richards Scholarship  
 Agnes Davis Richardson Memorial Scholarship Fund  
 John P. Richardson Jr. Violin Scholarship  
 The Naomi Ritter Scholarship  
 Walter and Dorothy Robert Scholarship Fund  
 Louise Roth Scholarship  
 Leonard & Maxine Ryan Memorial Fund  
 Barbara Kinsey Sable Voice Scholarship  
 Rosetta Samarotto Memorial Scholarship  
 Roy and Mary Samuelsen Scholarship  
 Elizabeth Schaefer Memorial Scholarship  
 Richard J. Schilling Collaborative Piano Scholarship in Honor of  
     Charles H. Webb  
 Lee Edward Schroeder Endowed Scholarship  
 Scott Schurz Music Scholarship  
 Michael L. Schwartzkopf Singing Hoosiers Fund  
 Gyorgy Sebok Scholarship in Piano  
 Ruth Parr Septer Scholarship Fund  
 John and Lorna Seward Organ Maintenance Fund  
 Maidee H. and Jackson A. Seward Organ Fund  
 Maurice F. Shadley Scholarship  
 Dr. Karen Shaw Doctoral Piano Fellowship  
 Odette Fautret Shepherd Endowed Scholarship or Teaching Assistantship  
 Sandra Brown Sherman Scholarship  
 W. Richard Shindle Musicology Fund  
 Terry C. Shirk Memorial Scholarship Fund  
 Shulz Memorial Fund  
 Curtis R. Simic Dean's Discretionary Fund  
 Singing Hoosiers Endowment  
 Singing Hoosiers Travel Fund  
 Jean Sinor Memorial Lecture Series  
 Jerry E. Sirucek Memorial Scholarship  
 Samuel and Martha Siurua Scholarship Fund  
 Susan Slaughter Trumpet Scholarship  
 John Winston Spanier Classical Piano Fellowship  
 Janos Starker Cello Scholarship  
 Dorothy Richard Starling Chair in Violin Studies  
 Charlotte Steinwedel Scholarship  
 Evelyn P. Stier Memorial Scholarship Fund  
 Edward M. Stochowicz Memorial Scholarship  
 Douglas and Margaret Strong Scholarship  
 Mark Sudeith Collaborative Piano Scholarship  
 Harry Sukman Memorial Scholarship Fund  
 Robert D. Sullivan Music Scholarship  
 Judy and Gregg Summerville Music Scholarship  
 R. Michael Suttle Trumpet Entrepreneur Scholarship  
 Elsie I. Sweeney Memorial Scholarship  
 The Maxine Rinne Talbot Music Scholarship  
 Donald L. Tavel Memorial Scholarship  
 Elizabeth Schaefer Tenreiro Scholarship Fund  
 Marcie Tichenor Scholarship  
 Mary Coffman Tilton Harpsichord Fellowship  
 Hans and Alice B. Tischler Endowment  
 Giorgio Tozzi Scholarship  
 Trombone Artistic Activity Fund  
 Sarah Joan Tuccelli-Gilbert Memorial Fellowship in Voice  
 Henry A. Upper Chair in Music  
 Andy and Celicia Upper Scholarship  
 Roe Van Boskirk Memorial Scholarship in Piano Fund  
 Carl G. and Mazelle Van Buskirk Memorial Scholarship Fund  
 Jon Vickers Film Scoring Award  
 Vocal Jazz Ensemble Fund  
 Robert J. Waller Sr. and Robert J. Waller Jr. Professorship of Jazz  
 William J. and Betty J. Wampler Scholarship  
 Dean Charles H. Webb Chair in Music  
 Charles and Kenda Webb Music Excellence Fund  
 Charles H. Webb Music Scholarship  
 Anna Weber Endowment Fund  
 Michael Weiss Fund  
 Wennerstrom Music Theory Associate Instructor Fellowship  
 Mary Wennerstrom Phillips and Leonard M. Phillips Endowment  
 Wennerstrom-Phillips Music Library Directorship Endowment  
 Wennerstrom-Phillips Piano Scholarship  
 Allen R. & Nancy A. White Instrument Fund  
 Allen R. & Nancy A. White Music Scholarship  
 Lawrence R. & Vera I. White Music Scholarship  
 Kenneth C. Whitener Fund for Ballet Excellence  
 Beth Stoner Wiegand Endowed Clarinet Scholarship  
 Fred Wilkins and Richard W. Bosse Flute Scholarship  
 Camilla Williams Voice Scholarship  
 Robert E. Williams Singing Hoosiers Scholarship  
 Patricia and Robert Williams Scholarship in Piano  
 Bill and Lenis Williamson Music Scholarship  
 Madge Wilson Music Scholarship Fund  
 Carol A. Winger Memorial Fellowship  
 Marjorie Schlamp Winters Scholarship Fund  
 Janet Corday Won Memorial Scholarship  
 Woodwind and the Brasswind Scholarship Fund  
 Mildred F. Yoder Scholarship  
 Steve Zegree Vocal Jazz Scholarship  
 Avedis Zildjian Percussion Scholarship  
 Asher G. Zlotnik Scholarship  
 Lennart A. von Zwegberg Cello Scholarship

## *The Society of the Friends of Music*

Friends of Music David Albright Memorial Scholarship  
Margaret K. Bachman Friends of Music Piano Scholarship  
Friends of Music Robert M. Barker Scholarship in honor of  
Patsy Fell-Barker  
Friends of Music Patsy Fell-Barker Scholarship in honor of my family  
Thomas J. Beddow & Joseph W. Nordloh Memorial Friends of Music  
Scholarship  
Alan P. Bell Memorial Friends of Music Scholarship  
George A. Bilque, Jr. Friends of Music Scholarship  
Helen and Leland Butler Friends of Music Scholarship  
Eleanor Jewell Byrnes Friends of Music Piano Scholarship  
Marvin Carmack Friends of Music Scholarship  
Joan and Marvin Carmack Friends of Music Scholarship  
Anita Hursh Cast Friends of Music Scholarship  
Esther Ritz Collyer Piano Scholarship  
Cristini Friends of Music Scholarship  
The Patsy Earles Friends of Music Scholarship  
Robert A. Edwards Friends of Music Scholarship  
Marianne V. Felton Friends of Music Scholarship in Voice  
Richard S. and Jeanne Hardy Forkner Friends of Music Scholarship  
Joyce and Jim Grandorf Friends of Music Scholarship  
Marjorie F. Gravit Friends of Music Scholarship  
Marjorie F. Gravit Piano Scholarship  
Haddawi and Schurz Friends of Music Guarantor Scholarship  
Friends of Music Haddawi Scholarship

Lawrence and Celeste Hurst Friends of Music Scholarship  
The Alice V. Jewell and David B. Mills Friends of Music Scholarship  
Jeanette Calkins Marchant Friends of Music Scholarship  
Perry J. Maull Friends of Music Travel Fund  
The Karl and Vera O'Lessker Friends of Music Scholarship  
Joanne E. Passet Ph.D. and Deborah S. Wehman Friends of Music  
Scholarship  
Mary Jane Reilly Friends of Music Scholarship  
Dagmar K. Riley Friends of Music Scholarship  
Samuel E. Ross Friends of Music Scholarship  
Dr. Richard Schilling-Ruth Tournier Friend of Music Voice Scholarship  
Scott C. and Kathryn Schurz Friends of Music Scholarship  
Scott C. and Kathryn Schurz Friends of Music Scholarship II  
The Scott C. and Kathryn Schurz Latin American Friends of Music  
Scholarship  
Mr. and Mrs. Jake Shainberg and Mr. and Mrs. David Newman  
Friends of Music Scholarship  
Society of the Friends of Music Fund  
Society of the Friends of Music of Indiana University Scholarship  
Ruth E. Thompson Friends of Music Scholarship  
Kenda Webb Friends of Music Scholarship  
Ulrich Weisstein Friends of Music Scholarship in Voice  
Herman B Wells Memorial Friends of Music Scholarship  
Patricia L. Williams Friends of Music Scholarship

### *Special thanks to*

Jake Heggie and Gene Scheer for sharing their time and artistry with Jacobs School of Music students, faculty, and the Bloomington community as *It's a Wonderful Life* makes its collegiate premiere with the Indiana University Opera and Ballet Theater.

Mary Alice Cox, Patsy Fell-Barker, Henry Upper, and the entire Society of the Friends of Music Fall Gala committee for organizing a special evening of fundraising benefitting Jacobs School of Music student scholarships.

Kim Pressman for the purchase of a new microphone system for use by Jacobs School of Music students and faculty.

Carol and John Cornwell and the Cheerful Heart Mission for partnering with our music education students, sending them to Haiti and the Dominican Republic, to provide music education for the youth in those countries.

Rick and Susan Marvin for organizing a Jacobs School of Music David N. Baker tribute at L.A.'s Blue Whale Jazz Club.

Old National Wealth Management for being our 2017-18 ticket stock sponsor.

Gary and Kathy Anderson for hosting a special evening for our ballet faculty.

Mary Anne and Ed Fox for providing generous support for the Jacobs School of Music's communications efforts.

The Joshi Family for the purchase of a new Hamburg Steinway for the Georgina Joshi Recording Arts Studio.

# IU Jacobs School of Music Ballet Theater Production Staff

General Manager and David H. Jacobs

Bicentennial Dean . . . . . Dean Gwyn Richards

Ted Jones Executive Director of Production . . . . . Timothy Stebbins

Executive Administrator of Instrumental

Ensembles . . . . . Thomas Wieligman

Rehearsal Pianists . . . . . Justin Barbour, Hanjin Sa

Irina Ter-Grigoryan

Athletic Training Supervisor . . . . . Alyssa McPherson

Athletic Trainer . . . . . Kelley Rock Wiese

Production Stage Manager . . . . . Trevor Regars

Technical Director . . . . . Robert Brown

Assistant Technical Director . . . . . Jeffrey Porter

Director of Paint and Props . . . . . Mark F. Smith

Scenic and Props Assistant . . . . . Gwen Law

Lighting Supervisor . . . . . Mitchell Ost

House Electrician . . . . . Jacob Lish

Costume Shop Manager . . . . . Dana Tzvetkov

Costume Shop Projects Manager . . . . . Soraya Noorzad

Wardrobe Supervisor . . . . . Sarah Akemon

Stage Carpenters . . . . . Ken D'Eliso, Andrew Hastings

Director of Audio Engineering and Sound

Production . . . . . Konrad Strauss

Audio Technician . . . . . Fallon Stillman

Director of Music Information Technology

Services . . . . . Philip Ponella

IUMusicLive! Streaming Technician . . . . . Tony Tadey

Ticketing, Sales, and House Manager . . . . . Benjamin Harris

Executive Director of External Affairs . . . . . Melissa Dickson

Director of Communications . . . . . Robin Lasek

Assistant Director of Communications . . . . . Linda Cajigas

Programs and Calendar Editor . . . . . Jonathan Shull

Communications Assistant . . . . . Sarah Slover

Administrative Assistant . . . . . Isabel Jin

Administrative Production Assistant . . . . . Madison Carroll

Administrative Business Assistant . . . . . Paulina Francisco

Graphic Designers . . . . . Ashley Beyer, Michelle Moss

Laura Pence

Web Designers . . . . . Loren McCready, Patrick Eddy

Stitchers . . . . . Wendy Langdon, Sarah Travis

Noriko Zulkowski

Dressers . . . . . Nell Vandeveld, Theresa Kesser

Liz Culpepper, Amy Wooster

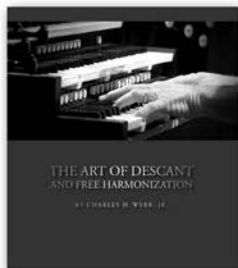
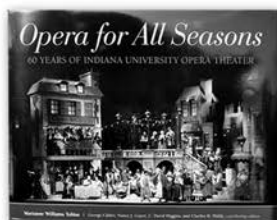
Catie Sneath, Anna Kozlakiewicz

Costume Shop Assistant . . . . . Claire Stebbins

INDIANA UNIVERSITY JACOBS SCHOOL OF MUSIC

# Music MarketPlace

**YOUR SOURCE** for IU  
Jacobs School of Music  
recordings, apparel,  
special gifts, and more!



ON SALE AT

**iumusicmarketplace.com**

or in the MAC lobby during opera and ballet productions.





# OPERA & BALLET

THEATER 17/18 SEASON

## **Don Giovanni**

*Wolfgang Amadeus Mozart*

SEP 15, 16, 22, 23 at 7:30pm

## **Fall Ballet**

*Balanchine, Bournonville,  
Janes, & Robbins*

SEP 29, 30 at 7:30pm

SEP 30 at 2pm

## **L'Étoile**

*Alexis Emmanuel Chabrier*

OCT 13, 14, 20, 21 at 7:30pm

## **It's a Wonderful Life**

*Jake Heggie & Gene Scheer*

NOV 10, 11, 16, 17 at 7:30pm

## **The Nutcracker**

*Peter Ilyich Tchaikovsky*

NOV 30 and DEC 1, 2 at 7:30pm

DEC 2, 3 at 2pm

## **Ariadne auf Naxos**

*Richard Strauss*

FEB 2, 3, 9, 10 at 7:30pm

## **Lucia di Lammermoor**

*Gaetano Donizetti*

FEB 23, 24 and MAR 2, 3 at 7:30pm

## **Spring Ballet**

*Balanchine, Graham, Morris*

MAR 23, 24 at 7:30pm

MAR 24 at 2pm

## **West Side Story**

*Leonard Bernstein*

APR 6, 7, 13, 14 at 7:30pm

APR 8 at 2pm

## **TICKETS**

Musical Arts Center Box Office  
Monday-Friday, 11:30-5:30  
812-855-7433

[music.indiana.edu/operaballet](http://music.indiana.edu/operaballet)



**JACOBS SCHOOL OF MUSIC**  
Indiana University Bloomington