

"Apple Sass"

By Harry Belding
Composer of "Good Gravy Rag"



BUCK AND LOWNEY
PUBLISHERS OF MUSIC THAT SELLS
HOLL AND BUILDING
ST. LOUIS, U.S.A.

Liesmann

(Tres Gingembre.)

Tango Tempo (with ginger)

Tango Tempo (with ginger)

A musical score for a piece titled "Tango Tempo (with ginger)". The score is written for piano (p) and features a 2/4 time signature. It consists of two staves: a treble staff and a bass staff. The melody is primarily in the treble staff, starting with a series of eighth and sixteenth notes, followed by a more complex passage with sharp signs (#) on the notes. The bass staff provides a rhythmic accompaniment with eighth and sixteenth notes. The score includes dynamic markings such as *f* (forte) and *fz* (forzando), and articulation marks like accents and slurs. The tempo is indicated as "Tango Tempo (with ginger)".

A musical score for the song 'The Rose Tree'. The score is written for piano (p) and features a melody in the right hand and a bass line in the left hand. The key signature is one sharp (F#) and the time signature is 2/4. The melody begins with a quarter rest followed by a quarter note G4, then a quarter note A4, and a quarter note B4. The bass line begins with a quarter note G2, then a quarter note F2, and a quarter note E2. The score includes various musical notations such as rests, notes, and accidentals.

A musical score for the song 'The Rose Tree'. The score is written for a piano, with a treble and bass staff. The key signature is one sharp (F#), and the time signature is 2/4. The melody is in the treble staff, and the accompaniment is in the bass staff. The score consists of 12 measures. The first measure has a treble staff with a whole note chord (F#4, A4, C5) and a bass staff with a whole note chord (F#2, A2, C3). The second measure has a treble staff with a whole note chord (F#4, A4, C5) and a bass staff with a whole note chord (F#2, A2, C3). The third measure has a treble staff with a whole note chord (F#4, A4, C5) and a bass staff with a whole note chord (F#2, A2, C3). The fourth measure has a treble staff with a whole note chord (F#4, A4, C5) and a bass staff with a whole note chord (F#2, A2, C3). The fifth measure has a treble staff with a whole note chord (F#4, A4, C5) and a bass staff with a whole note chord (F#2, A2, C3). The sixth measure has a treble staff with a whole note chord (F#4, A4, C5) and a bass staff with a whole note chord (F#2, A2, C3). The seventh measure has a treble staff with a whole note chord (F#4, A4, C5) and a bass staff with a whole note chord (F#2, A2, C3). The eighth measure has a treble staff with a whole note chord (F#4, A4, C5) and a bass staff with a whole note chord (F#2, A2, C3). The ninth measure has a treble staff with a whole note chord (F#4, A4, C5) and a bass staff with a whole note chord (F#2, A2, C3). The tenth measure has a treble staff with a whole note chord (F#4, A4, C5) and a bass staff with a whole note chord (F#2, A2, C3). The eleventh measure has a treble staff with a whole note chord (F#4, A4, C5) and a bass staff with a whole note chord (F#2, A2, C3). The twelfth measure has a treble staff with a whole note chord (F#4, A4, C5) and a bass staff with a whole note chord (F#2, A2, C3).

A handwritten musical score for the song 'The Rose Tree'. The score is written on two staves, a treble staff and a bass staff, joined by a brace on the left. The key signature has one flat (B-flat), and the time signature is 3/4. The melody is written in the treble staff, and the accompaniment is in the bass staff. The piece consists of eight measures. The first measure has a whole rest in the treble and a quarter note in the bass. The second measure has a half note in the treble and a quarter note in the bass. The third measure has a half note in the treble and a quarter note in the bass. The fourth measure has a half note in the treble and a quarter note in the bass. The fifth measure has a half note in the treble and a quarter note in the bass. The sixth measure has a half note in the treble and a quarter note in the bass. The seventh measure has a half note in the treble and a quarter note in the bass. The eighth measure has a half note in the treble and a quarter note in the bass. The piece ends with a double bar line.

A musical score for a piano piece. The title 'The Rose Tree' is written in a decorative, cursive font at the top. The score is written on two staves, treble and bass clef. The key signature has one sharp (F#), and the time signature is 3/4. The melody is in the treble staff, and the accompaniment is in the bass staff. The piece consists of six measures. The first measure has a whole note in the treble and a half note in the bass. The second measure has a whole note in the treble and a half note in the bass. The third measure has a whole note in the treble and a half note in the bass. The fourth measure has a whole note in the treble and a half note in the bass. The fifth measure has a whole note in the treble and a half note in the bass. The sixth measure has a whole note in the treble and a half note in the bass. The piece ends with a double bar line.

Copyright MCMXIII by Buck & Lowney.

For Sale At Any Complete Music Dept.

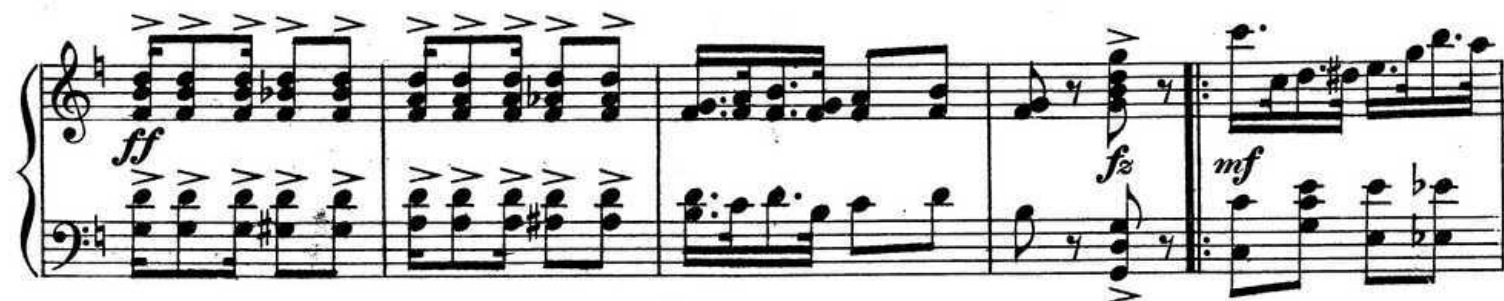
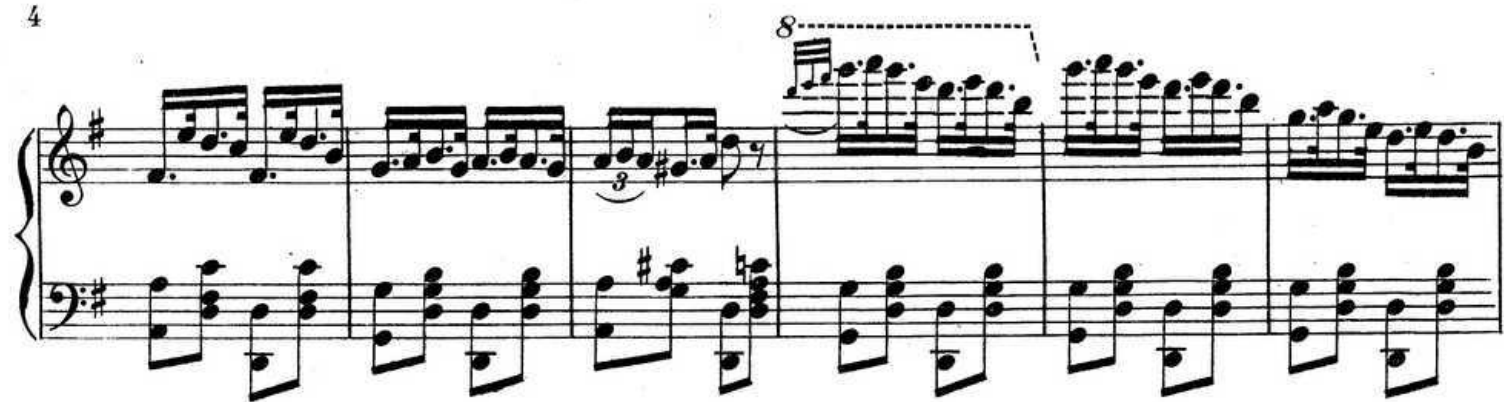
Apple Sass Rag.

By HARRY BELDING
Composer of
Good Gravy Rag.

The musical score for "Apple Sass Rag" is written for piano in 2/4 time. It features a key signature of one sharp (F#). The score is divided into five systems. The first system starts with a forte (ff) dynamic. The second system includes a piano (p) dynamic marking. The third system also includes a piano (p) dynamic marking. The fourth system includes first and second endings. The fifth system starts with a forte (f) dynamic and ends with a mezzo-forte (mf) dynamic. The score includes various musical notations such as eighth notes, sixteenth notes, and rests, along with performance instructions like accents and slurs.

British Copyright Secured.

Copyright MCMXIV by Buck & Lowney, St. Louis, U. S. A.





Apple Sass 3.

WE SUBMIT A PORTION OF
THE FAMOUS "TRUE BLUE" SONG
"LADDIE"



The Biggest "Hit" of the Season

This Beautiful Ballad now ranks with the Highest Class Songs on the Market.

It is unlike any number you have ever heard; the Melody is that soft, plaintive kind that reminds one of a Fairy Band.

The Lyric is a Story of True Love, not of to-day; but the love of "LADDIE" for his little sister who lives with the Fairies deep in the Woodland.

It is a wonderful story wedded to a wonderful melody and should be on every music lovers Piano.

Music by
LUELLA LOCKWOOD MOORE
 Lyrics by
J. FRED LAWTON

"A True Blue Song"

Laddie.

Music by
 J. FRED LAWTON.

Music by
 LUELLA LOCKWOOD MOORE

A FACT WORTH KNOWING

As "Publishers of Music that Sells" our firm has always placed on the Market Music that Pleases.

Our Ideas are new, the greatest Orchestras and Vaudeville Stars in the country, say our Music is wonderful.

OUR LATEST SUCCESSES ARE:

- "I had a Wonderful Girl" Ballad
- "Too Much Jinger" Tango Dance
- "Your'e a Beautiful Brown Eyed Burglar"
- "Lets all get Together and Sing"
- "The Marjorie" Hesitation Waltz
- "Reuben Reel" Castle Walk
- "I'm Pinin' Away for You".

If your Music Department does not have it in stock send
 15c. to Buck & Lowney, St. Louis.

SEND FOR OUR
 COMPLETE
 Thematic Catalogue.

BUCK & LOWNEY

HOLLAND BUILDING

ST. LOUIS, U. S. A.

"PUBLISHERS
 of
 MUSIC THAT
 SELLS"



THE WORDS AND MUSIC OF THIS SONG IS A TRUE STORY.
 IT SHOULD BE IN EVERY HOME — THE CHORUS FINISHES THIS —



PRINTED AND PUBLISHED BY BUCK & LOWNEY, ST. LOUIS, MO.
 COPYRIGHT 1913 BY BUCK & LOWNEY